



SZABO SCANDIC

Part of Europa Biosite

Produktinformation



Forschungsprodukte & Biochemikalien



Zellkultur & Verbrauchsmaterial



Diagnostik & molekulare Diagnostik



Laborgeräte & Service

Weitere Information auf den folgenden Seiten!
See the following pages for more information!



Lieferung & Zahlungsart

siehe unsere [Liefer- und Versandbedingungen](#)

Zuschläge

- Mindermengenzuschlag
- Trockeneiszuschlag
- Gefahrgutzuschlag
- Expressversand

SZABO-SCANDIC HandelsgmbH

Quellenstraße 110, A-1100 Wien

T. +43(0)1 489 3961-0

F. +43(0)1 489 3961-7

mail@szabo-scandic.com

www.szabo-scandic.com

[linkedin.com/company/szaboscandic](https://www.linkedin.com/company/szaboscandic) 

PIMT Antibody

Rabbit Polyclonal

Antigen Affinity Purified	RefSeq ID	NP_079107.5
Catalog No. A300-814A	Uniprot ID	Q96RS0
Lot No. A300-814A-3	GeneID	96764

APPLICATIONS	WB, IP, IHC
SPECIES REACTIVITY	Human
AMOUNT	100 µl
CONCENTRATION	200 µg/ml
STORAGE/SHELF LIFE	2 – 8°C / 1 year from date of receipt
PHYSICAL STATE	Liquid
BUFFER	Tris-buffered Saline containing 0.1% BSA and 0.09% Sodium Azide
ISOTYPE	IgG
ORIGIN	USA
PRODUCTION PROCEDURES	Antibody was affinity purified using an epitope specific to PIMT immobilized on solid support.

The epitope recognized by A300-814A maps to a region between residue 150 and 200 of human PRIP-Interacting Protein with Methyltransferase Domain (Nuclear Receptor Coactivator 6 Interacting Protein) using the numbering given in entry NP_079107.5 (GeneID 96764).

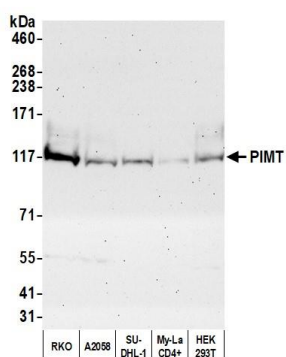
Immunoglobulin concentration was determined by extinction coefficient: absorbance at 280 nm of 1.4 equals 1.0 mg of IgG.

APPLICATIONS	Centrifuge tube to remove product from lid. Optimal working dilutions should be determined experimentally by the investigator. Prepare working dilution immediately before use.
	Western Blot 1:2,000 – 1:10,000
	Immunoprecipitation 2 – 10 µg/mg lysate
	Immunohistochemistry 1:100 to 1:500. Epitope retrieval with Tris-EDTA pH9.0 is recommended for FFPE tissue sections.

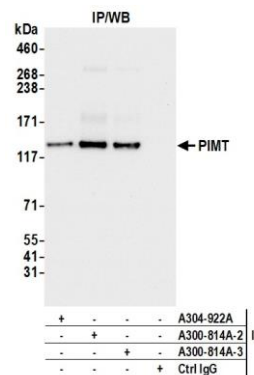
IHC HUMAN CONTROLS	Breast Carcinoma, Colon Carcinoma, Ovarian Carcinoma, Prostate Carcinoma, Testicular Seminoma
---------------------------	---

ADDITIONAL INFO	https://www.fortislife.com/p/A300-814A Use the link above to view SDS, a current list of citations, and other product specific information.
------------------------	---

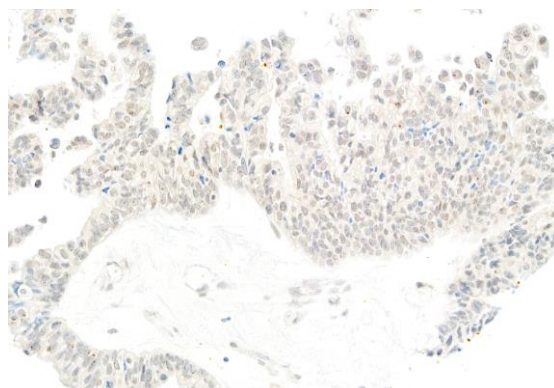
This document certifies that this product has met all of the quality control standards defined by Bethyl Laboratories, Inc.
Michael Spencer, PhD Date: November 15, 2022



Detection of human PIMT by western blot. *Samples:* Whole cell lysate (50 µg) from RKO, A2058, SU-DHL-1, My-La CD4+, and HEK293T cells prepared using NETN lysis buffer. *Antibody:* Affinity purified rabbit anti-PIMT antibody (A300-814A lot 3) used for WB at 0.04 µg/ml. *Detection:* Chemiluminescence with an exposure time of 75 seconds.



Detection of human PIMT by western blot of immunoprecipitates. *Samples:* Whole cell lysate (1.0 mg per IP reaction; 20% of IP loaded) from RKO cells prepared using NETN lysis buffer. *Antibodies:* Affinity purified rabbit anti-PIMT antibody (A300-814A lot 3) used for IP at 2 µg per reaction. PIMT was also immunoprecipitated by a previous lot of this antibody (A300-814A lot 2) and a second antibody against a different epitope of PIMT (A304-922A). For blotting immunoprecipitated PIMT, A300-814A was used at 0.04 µg/ml. *Detection:* Chemiluminescence with an exposure time of 3 seconds.



Detection of human PIMT by immunohistochemistry. *Sample:* FFPE section of human ovarian carcinoma. *Antibody:* Affinity purified rabbit anti-PIMT (A300-814A Lot 3) used at a dilution of 1:200 (1 µg/ml). *Detection:* DAB