



SZABO SCANDIC

Part of Europa Biosite

Produktinformation



Forschungsprodukte & Biochemikalien



Zellkultur & Verbrauchsmaterial



Diagnostik & molekulare Diagnostik



Laborgeräte & Service

Weitere Information auf den folgenden Seiten!
See the following pages for more information!



Lieferung & Zahlungsart

siehe unsere [Liefer- und Versandbedingungen](#)

Zuschläge

- Mindermengenzuschlag
- Trockeneiszuschlag
- Gefahrgutzuschlag
- Expressversand

SZABO-SCANDIC HandelsgmbH

Quellenstraße 110, A-1100 Wien

T. +43(0)1 489 3961-0

F. +43(0)1 489 3961-7

mail@szabo-scandic.com

www.szabo-scandic.com

[linkedin.com/company/szaboscandic](https://www.linkedin.com/company/szaboscandic) 

TIF1 Alpha/TRIM24 Antibody

Rabbit Polyclonal

Antigen Affinity Purified Protein ID NP_056989.2

Catalog No. A300-815A-T GeneID 8805

Lot No. A300-815A-T-3

APPLICATIONS	WB, IP, IHC, ChIP-Seq
SPECIES REACTIVITY	Human, Mouse
AMOUNT	10 µl
CONCENTRATION	200 µg/ml
STORAGE/SHELF LIFE	2 - 8°C / 1 year from date of receipt
PHYSICAL STATE	Liquid
BUFFER	Tris-buffered Saline containing 0.1% BSA and 0.09% Sodium Azide
ISOTYPE	IgG
ORIGIN	USA
PRODUCTION PROCEDURES	Antibody was affinity purified using an epitope specific to TIF1 Alpha/TRIM24 immobilized on solid support.

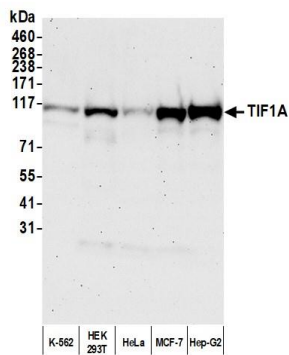
The epitope recognized by A300-815A-T maps to a region between residue 700 and 750 of human Transcriptional Intermediary Factor 1 Alpha (Tripartite Motif-Containing 24) using the numbering given in entry NP_056989.2 (GeneID 8805).

APPLICATIONS Centrifuge tube to remove product from lid. Optimal working dilutions should be determined experimentally by the investigator. Prepare working dilution immediately before use.

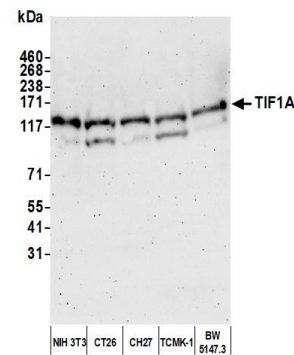
Western Blot	1:2,000 - 1:10,000
Immunoprecipitation	2 - 10 µg/mg lysate
Immunohistochemistry	1:100 to 1:500. Epitope retrieval with citrate buffer pH6.0 is recommended for FFPE tissue sections.
ChIP-Seq	ChIP-Seq 4 µg/30 µg chromatin

ADDITIONAL INFO <https://www.bethyl.com/product/A300-815A-T>
Use the link above to view SDS, a current list of citations, and other product specific information.
IP-western blot protocol: https://www.bethyl.com/content/protocol_IP_WB

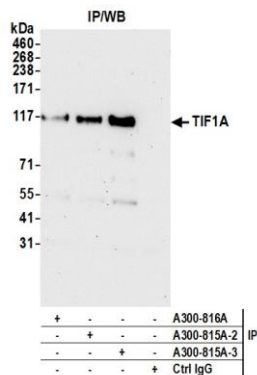
This document certifies that this product has met all of the quality control standards defined by Bethyl Laboratories, Inc.
Michael Spencer, PhD Date: June 2, 2022



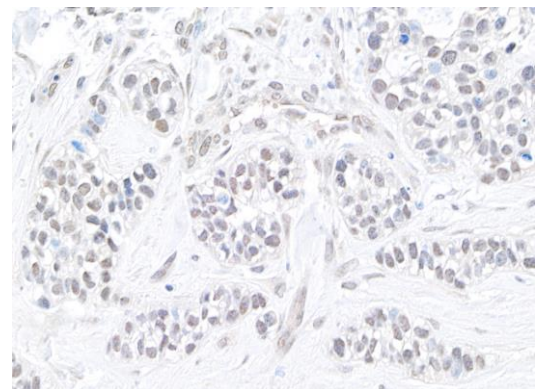
Detection of human TIF1A by western blot. *Samples:* Whole cell lysate (50 µg) from K-562, HEK293T, HeLa, MCF-7, and Hep-G2 cells prepared using NETN lysis buffer. *Antibody:* Affinity purified rabbit anti-TIF1A antibody (A300-815A lot 3) used for WB at 0.1 µg/ml. *Detection:* Chemiluminescence with an exposure time of 75 seconds.



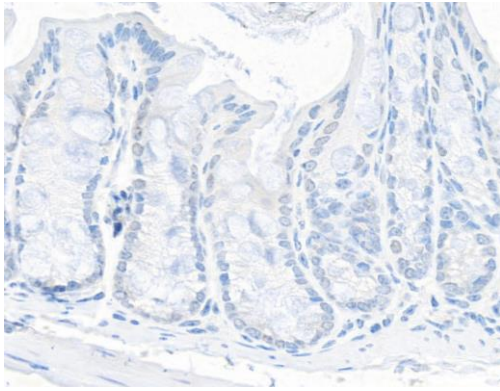
Detection of mouse TIF1A by western blot. *Samples:* Whole cell lysate (50 µg) from NIH 3T3, CT26, CH27, TCMK-1, and BW5147.3 cells prepared using NETN lysis buffer. *Antibody:* Affinity purified rabbit anti-TIF1A antibody (A300-815A lot 3) used for WB at 0.1 µg/ml. *Detection:* Chemiluminescence with an exposure time of 3 minutes.



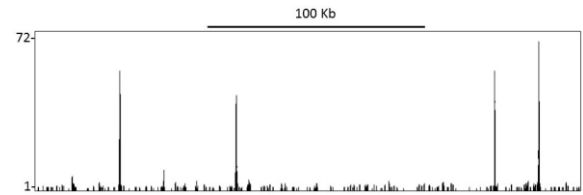
Detection of human TIF1A by western blot of immunoprecipitates. *Samples:* Whole cell lysate (1.0 mg per IP reaction; 20% of IP loaded) from HEK293T cells prepared using NETN lysis buffer. *Antibodies:* Affinity purified rabbit anti-TIF1A antibody (A300-815A lot 3) used for IP at 6 µg per reaction. TIF1A was also immunoprecipitated by a previous lot of this antibody (A300-815A lot 2) and a second antibody against a different epitope of TIF1A (A300-816A). For blotting immunoprecipitated TIF1A, A300-815A was used at 0.04 µg/ml. *Detection:* Chemiluminescence with an exposure time of 30 seconds.



Detection of human TIF1 alpha/TRIM24 by immunohistochemistry. *Sample:* FFPE section of human breast carcinoma. *Antibody:* Affinity purified rabbit anti-TIF1 alpha/TRIM24 (A300-815A Lot 3) used at a dilution of 1:200 (1 µg/ml). *Detection:* DAB



Detection of mouse TIF1 alpha/TRIM24 by immunohistochemistry. *Sample:* FFPE section of mouse intestine. *Antibody:* Affinity purified rabbit anti-TIF1 alpha/TRIM24 (A300-815A Lot 3) used at a dilution of 1:200 (1 µg/ml). *Detection:* DAB



Localization of TIF1 Alpha/TRIM24 Binding Sites by ChIP-seq. Chromatin from Breast cancer cell line T47D was immunoprecipitated with anti-TIF1 Alpha/TRIM24 antibody A300-815A and analyzed by DNA sequencing. The figure illustrates the peak distribution of TIF1 Alpha/TRIM24 binding within a 250 Kb region of chromosome 19 as detected using anti-TIF1 Alpha/TRIM24 antibody A300-815A. ChIP-seq validation performed by Active Motif, Carlsbad, CA.