



SZABO SCANDIC

Part of Europa Biosite

Produktinformation



Forschungsprodukte & Biochemikalien



Zellkultur & Verbrauchsmaterial



Diagnostik & molekulare Diagnostik



Laborgeräte & Service

Weitere Information auf den folgenden Seiten!
See the following pages for more information!



Lieferung & Zahlungsart

siehe unsere [Liefer- und Versandbedingungen](#)

Zuschläge

- Mindermengenzuschlag
- Trockeneiszuschlag
- Gefahrgutzuschlag
- Expressversand

SZABO-SCANDIC HandelsgmbH

Quellenstraße 110, A-1100 Wien

T. +43(0)1 489 3961-0

F. +43(0)1 489 3961-7

mail@szabo-scandic.com

www.szabo-scandic.com

[linkedin.com/company/szaboscandic](https://www.linkedin.com/company/szaboscandic) 

TIF1 Alpha/TRIM24 Antibody

Rabbit Polyclonal

Antigen Affinity Purified Protein ID NP_056989.2

Catalog No. A300-815A GeneID 8805

Lot No. A300-815A-3

APPLICATIONS	WB, IP, IHC, ChIP-Seq
SPECIES REACTIVITY	Human, Mouse
AMOUNT	100 µl
CONCENTRATION	200 µg/ml
STORAGE/SHELF LIFE	2 - 8°C / 1 year from date of receipt
PHYSICAL STATE	Liquid
BUFFER	Tris-buffered Saline containing 0.1% BSA and 0.09% Sodium Azide
ISOTYPE	IgG
ORIGIN	USA
PRODUCTION PROCEDURES	Antibody was affinity purified using an epitope specific to TIF1 Alpha/TRIM24 immobilized on solid support.

The epitope recognized by A300-815A maps to a region between residue 700 and 750 of human Transcriptional Intermediary Factor 1 Alpha (Tripartite Motif-Containing 24) using the numbering given in entry NP_056989.2 (GeneID 8805).

Immunoglobulin concentration was determined by extinction coefficient: absorbance at 280 nm of 1.4 equals 1.0 mg of IgG.

APPLICATIONS Centrifuge tube to remove product from lid. Optimal working dilutions should be determined experimentally by the investigator. Prepare working dilution immediately before use.

Western Blot 1:2,000 - 1:10,000

Immunoprecipitation 2 - 10 µg/mg lysate

Immunohistochemistry 1:200 to 1:1000. Epitope retrieval with citrate buffer pH6.0 is recommended for FFPE tissue sections.

ChIP-Seq ChIP-Seq 4 µg/30 µg chromatin

IHC HUMAN CONTROLS Bone Marrow-Metastatic Carcinoma, Breast Carcinoma, Metastatic Lymph Node, Ovarian Carcinoma, Prostate Carcinoma

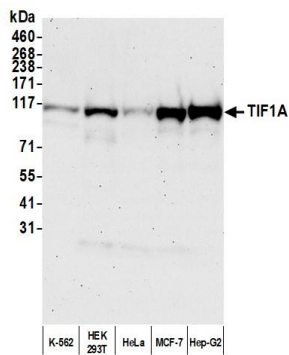
IHC MOUSE CONTROLS Colon Carcinoma CT26, Small Intestine, Squamous Cell Carcinoma, Teratoma

ADDITIONAL INFO <https://www.bethyl.com/product/A300-815A>

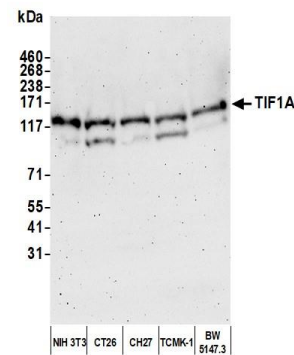
Use the link above to view SDS, a current list of citations, and other product specific information.

IP-western blot protocol: https://www.bethyl.com/content/protocol_IP_WB

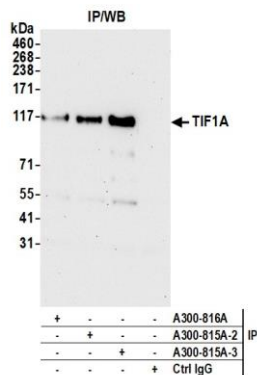
This document certifies that this product has met all of the quality control standards defined by Bethyl Laboratories, Inc.
Michael Spencer, PhD Date: June 2, 2022



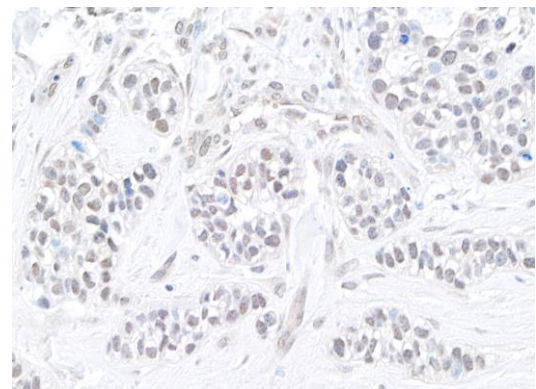
Detection of human TIF1A by western blot. *Samples:* Whole cell lysate (50 µg) from K-562, HEK293T, HeLa, MCF-7, and Hep-G2 cells prepared using NETN lysis buffer. *Antibody:* Affinity purified rabbit anti-TIF1A antibody (A300-815A lot 3) used for WB at 0.1 µg/ml. *Detection:* Chemiluminescence with an exposure time of 75 seconds.



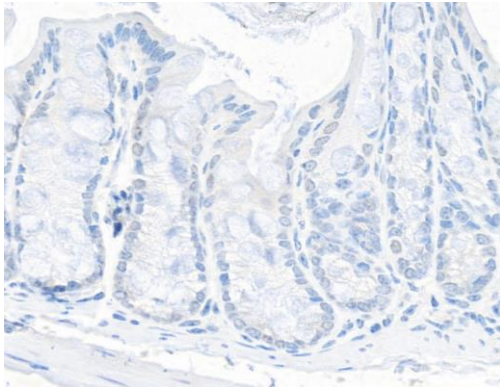
Detection of mouse TIF1A by western blot. *Samples:* Whole cell lysate (50 µg) from NIH 3T3, CT26, CH27, TCMK-1, and BW5147.3 cells prepared using NETN lysis buffer. *Antibody:* Affinity purified rabbit anti-TIF1A antibody (A300-815A lot 3) used for WB at 0.1 µg/ml. *Detection:* Chemiluminescence with an exposure time of 3 minutes.



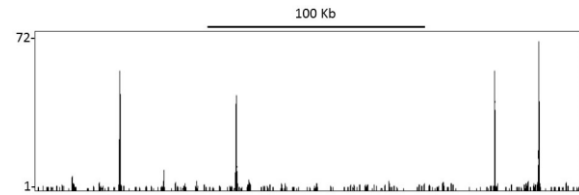
Detection of human TIF1A by western blot of immunoprecipitates. *Samples:* Whole cell lysate (1.0 mg per IP reaction; 20% of IP loaded) from HEK293T cells prepared using NETN lysis buffer. *Antibodies:* Affinity purified rabbit anti-TIF1A antibody (A300-815A lot 3) used for IP at 6 µg per reaction. TIF1A was also immunoprecipitated by a previous lot of this antibody (A300-815A lot 2) and a second antibody against a different epitope of TIF1A (A300-816A). For blotting immunoprecipitated TIF1A, A300-815A was used at 0.04 µg/ml. *Detection:* Chemiluminescence with an exposure time of 30 seconds.



Detection of human TIF1 alpha/TRIM24 by immunohistochemistry. *Sample:* FFPE section of human breast carcinoma. *Antibody:* Affinity purified rabbit anti-TIF1 alpha/TRIM24 (CA300-815A Lot 3) used at a dilution of 1:200 (1 µg/ml). *Detection:* DAB



Detection of mouse TIF1 alpha/TRIM24 by immunohistochemistry. *Sample:* FFPE section of mouse intestine. *Antibody:* Affinity purified rabbit anti-TIF1 alpha/TRIM24 (A300-815A Lot 3) used at a dilution of 1:200 (1 µg/ml). *Detection:* DAB



Localization of TIF1 Alpha/TRIM24 Binding Sites by ChIP-seq. Chromatin from Breast cancer cell line T47D was immunoprecipitated with anti-TIF1 Alpha/TRIM24 antibody A300-815A and analyzed by DNA sequencing. The figure illustrates the peak distribution of TIF1 Alpha/TRIM24 binding within a 250 Kb region of chromosome 19 as detected using anti-TIF1 Alpha/TRIM24 antibody A300-815A. ChIP-seq validation performed by Active Motif, Carlsbad, CA.