



SZABO SCANDIC

Part of Europa Biosite

Produktinformation



Forschungsprodukte & Biochemikalien



Zellkultur & Verbrauchsmaterial



Diagnostik & molekulare Diagnostik



Laborgeräte & Service

Weitere Information auf den folgenden Seiten!
See the following pages for more information!



Lieferung & Zahlungsart

siehe unsere [Liefer- und Versandbedingungen](#)

Zuschläge

- Mindermengenzuschlag
- Trockeneiszuschlag
- Gefahrgutzuschlag
- Expressversand

SZABO-SCANDIC HandelsgmbH

Quellenstraße 110, A-1100 Wien

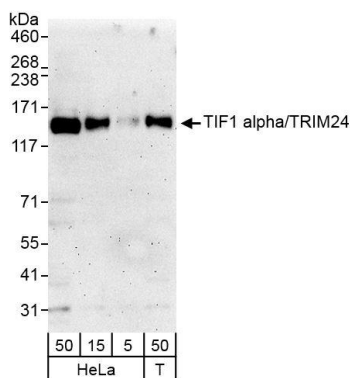
T. +43(0)1 489 3961-0

F. +43(0)1 489 3961-7

mail@szabo-scandic.com

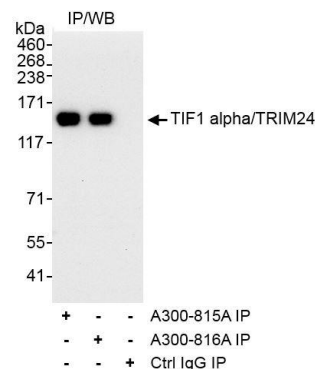
www.szabo-scandic.com

[linkedin.com/company/szaboscandic](https://www.linkedin.com/company/szaboscandic) 



Detection of human TIF1 alpha/TRIM24 by western blot.

Samples: Whole cell lysate from HeLa (5, 15 and 50 µg) and HEK293T (T; 50 µg) cells. *Antibodies:* Affinity purified rabbit anti-TIF1 alpha/TRIM24 antibody A300-816A (lot A300-816A-1) used for WB at 0.1 µg/ml. *Detection:* Chemiluminescence with exposure time of 3 minutes.



Detection of human TIF1 alpha/TRIM24 by western blot of immunoprecipitates.

Samples: Whole cell lysate (1 mg for IP, 20% of IP loaded) from HeLa cells. *Antibodies:* Affinity purified rabbit anti-TIF1 alpha/TRIM24 antibody A300-816A (lot A300-816A-1) used for IP at 3 µg/mg lysate. TIF1 alpha/TRIM24 was also immunoprecipitated by rabbit anti-TIF1 alpha/TRIM24 antibody A300-815A, which recognizes an upstream epitope. For blotting immunoprecipitated TIF1 alpha/TRIM24, A300-816A was used at 1.0 µg/ml. *Detection:* Chemiluminescence with exposure time of 30 seconds.