



SZABO SCANDIC

Part of Europa Biosite

Produktinformation



Forschungsprodukte & Biochemikalien



Zellkultur & Verbrauchsmaterial



Diagnostik & molekulare Diagnostik



Laborgeräte & Service

Weitere Information auf den folgenden Seiten!
See the following pages for more information!



Lieferung & Zahlungsart

siehe unsere [Liefer- und Versandbedingungen](#)

Zuschläge

- Mindermengenzuschlag
- Trockeneiszuschlag
- Gefahrgutzuschlag
- Expressversand

SZABO-SCANDIC HandelsgmbH

Quellenstraße 110, A-1100 Wien

T. +43(0)1 489 3961-0

F. +43(0)1 489 3961-7

mail@szabo-scandic.com

www.szabo-scandic.com

[linkedin.com/company/szaboscandic](https://www.linkedin.com/company/szaboscandic) 

Histone H3 Antibody

Rabbit Polyclonal

Antigen Affinity Purified

Protein ID NP_003520.1

Catalog No. A300-823A

GeneID 8350

Lot No. A300-823A-3



APPLICATIONS	WB, IP, IHC, IHC-IF
SPECIES REACTIVITY	Human, Mouse
PRESUMED REACTIVITY	Based on 100% sequence identity, this antibody is predicted to react with Rat, <i>D. melanogaster</i> , Zebrafish, <i>X. laevis</i> , <i>X. tropicalis</i> , Chicken, Bovine, Rabbit, Pig and Orangutan
AMOUNT	100 µl
CONCENTRATION	200 µg/ml
STORAGE/SHELF LIFE	2 - 8° C / 1 year from date of receipt
PHYSICAL STATE	Liquid
BUFFER	Tris-buffered Saline containing 0.1% BSA and 0.09% Sodium Azide
ISOTYPE	IgG
ORIGIN	USA
PRODUCTION PROCEDURES	Antibody was affinity purified using an epitope specific to Histone H3 immobilized on solid support. The epitope recognized by A300-823A maps to a region between residue 100 and the C-terminus (residue 135) of human Histone H3 using the numbering given in entry NP_003520.1 (GeneID 8350).

Immunoglobulin concentration was determined by extinction coefficient: absorbance at 280 nm of 1.4 equals 1.0 mg of IgG.

APPLICATIONS Centrifuge tube to remove product from lid. Optimal working dilutions should be determined experimentally by the investigator. Prepare working dilution immediately before use.

Western Blot	1:2,000 - 1:10,000
Immunoprecipitation	2 - 10 µg/mg lysate
Immunohistochemistry	1:200 - 1:1,000. Epitope retrieval with Tris-EDTA pH 9.0 is recommended for FFPE tissue sections.
Immunofluorescence (IHC)	1:100 - 1:500

APPLICATION NOTES Western blot of immunoprecipitates performed using Normal Pig Serum (Cat. No. S100-020), Goat anti-Rabbit Light Chain HRP Conjugate (Cat. No. A120-113P) and 4-12% SDS-PAGE (link to IP-western blot protocol in Additional Info section below).

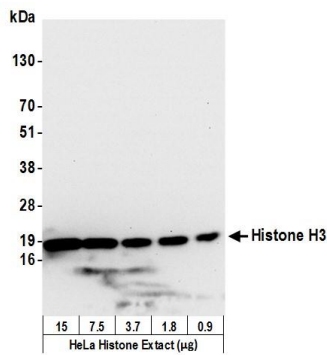
IHC HUMAN CONTROLS Western blot of lysates performed using standard western blot reagents and 4-12% SDS-PAGE. Breast Carcinoma, Colon Carcinoma, Ovarian Carcinoma, Prostate Carcinoma, Stomach Adenocarcinoma, Testicular Seminoma

IHC MOUSE CONTROLS Colon Carcinoma CT26, Renal Cell Carcinoma, Teratoma

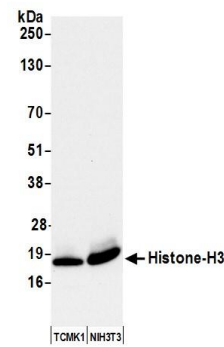
ADDITIONAL INFO <https://www.bethyl.com/product/A300-823A>

Use the link above to view SDS, a current list of citations, and other product specific information. IP-western blot protocol https://www.bethyl.com/content/protocol_IP_WB

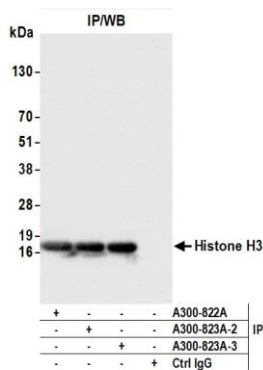
This document certifies that this product has met all of the quality control standards defined by Bethyl Laboratories, Inc.
Eric McIntush, PhD | Chief Scientific Officer Date: December 4, 2019



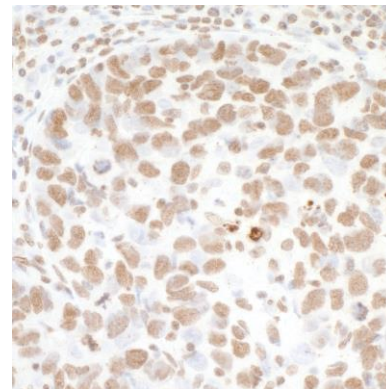
Detection of human Histone H3 by western blot. *Samples:* Histones (15, 7.5, 3.7, 1.8, 0.9 µg) isolated from HeLa cells. *Antibody:* Affinity purified rabbit anti-Histone H3 antibody A300-823A (lot A300-823A-3) used for WB at 0.1 µg/ml. *Detection:* Chemiluminescence with an exposure time of 10 seconds.



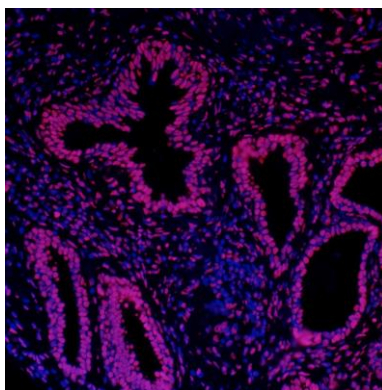
Detection of mouse Histone-H3 by western blot. *Samples:* Whole cell lysate (10 µg) from TCMK-1 and NIH 3T3 cells prepared using RIPA lysis buffer. *Antibody:* Affinity purified rabbit anti-Histone-H3 antibody A300-823A (lot A300-823A-3) used for WB at 0.1 µg/ml. *Detection:* Chemiluminescence with an exposure time of 3 seconds.



Detection of human Histone H3 by western blot of immunoprecipitates. *Samples:* Histones (1.0 mg per IP reaction; 20% of IP loaded) isolated from HeLa cells prepared using NETN lysis buffer. *Antibodies:* Affinity purified rabbit anti-Histone H3 antibody A300-823A (lot A300-823A-3) used for IP at 3 µg per reaction. Histone H3 was also immunoprecipitated by a previous lot of this antibody (lot A300-823A-2) and rabbit anti-Histone H3 antibody A300-822A. For blotting immunoprecipitated Histone H3, A300-823A was used at 1 µg/ml. *Detection:* Chemiluminescence with an exposure time of 3 seconds.



Detection of human Histone H3 by immunohistochemistry. *Sample:* FFPE section of human breast carcinoma. *Antibody:* Affinity purified rabbit anti-Histone H3 (Cat. No. A300-832A Lot3) used at a dilution of 1:1,000 (0.2µg/ml). *Detection:* DAB



Detection of human Histone H3 by immunohistochemistry. *Sample:* FFPE section of human prostate carcinoma. *Antibody:* Affinity purified rabbit anti-Histone H3 (Cat. No. A300-832A Lot3) used at a dilution of 1:200 (1 µg/ml). *Detection:* Red-fluorescent goat anti-rabbit IgG-heavy and light chain, cross-adsorbed Antibody DyLight® 594 Conjugated (Cat. No. A120-201D4) used at a dilution of 1:100