



SZABO SCANDIC

Part of Europa Biosite

Produktinformation



Forschungsprodukte & Biochemikalien



Zellkultur & Verbrauchsmaterial



Diagnostik & molekulare Diagnostik



Laborgeräte & Service

Weitere Information auf den folgenden Seiten!
See the following pages for more information!



Lieferung & Zahlungsart

siehe unsere [Liefer- und Versandbedingungen](#)

Zuschläge

- Mindermengenzuschlag
- Trockeneiszuschlag
- Gefahrgutzuschlag
- Expressversand

SZABO-SCANDIC HandelsgmbH

Quellenstraße 110, A-1100 Wien

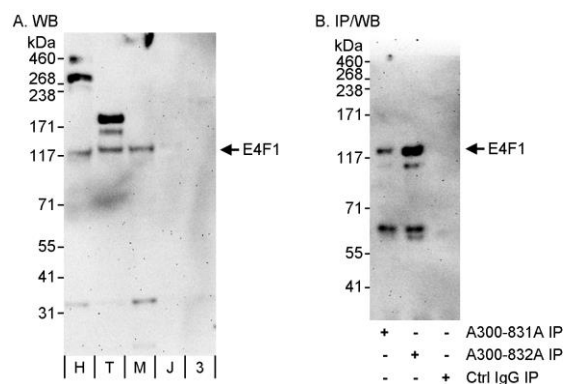
T. +43(0)1 489 3961-0

F. +43(0)1 489 3961-7

mail@szabo-scandic.com

www.szabo-scandic.com

[linkedin.com/company/szaboscandic](https://www.linkedin.com/company/szaboscandic)



Detection of human E4F1 by western blot and immunoprecipitation.

Samples: Whole cell lysate from HeLa (H; 50 μ g), HEK293T (T; 50 μ g), MCF-7 (M; 50 μ g for WB; 1 mg for IP, 20% of IP loaded), Jurkat (J; 50 μ g) and NIH 3T3 (3; 50 μ g) cells. **Antibodies:** Affinity purified rabbit anti-E4F1 antibody A300-831A used for WB at 0.1 μ g/ml (A) and 1 μ g/ml (B) and used for IP at 3 μ g/mg lysate (B). E4F1 was also immunoprecipitated by rabbit anti-E4F1 antibody A300-832A, which recognizes a downstream epitope. **Detection:** Chemiluminescence with exposure times of 3 minutes (A and B).