



# SZABO SCANDIC

Part of Europa Biosite

## Produktinformation



Forschungsprodukte & Biochemikalien



Zellkultur & Verbrauchsmaterial



Diagnostik & molekulare Diagnostik



Laborgeräte & Service

Weitere Information auf den folgenden Seiten!  
See the following pages for more information!



### Lieferung & Zahlungsart

siehe unsere [Liefer- und Versandbedingungen](#)

### Zuschläge

- Mindermengenzuschlag
- Trockeneiszuschlag
- Gefahrgutzuschlag
- Expressversand

### SZABO-SCANDIC HandelsgmbH

Quellenstraße 110, A-1100 Wien

T. +43(0)1 489 3961-0

F. +43(0)1 489 3961-7

[mail@szabo-scandic.com](mailto:mail@szabo-scandic.com)

[www.szabo-scandic.com](http://www.szabo-scandic.com)

[linkedin.com/company/szaboscandic](https://www.linkedin.com/company/szaboscandic) 

# DHX9 Antibody

Rabbit Polyclonal

Antigen Affinity Purified	RefSeq ID	CAA71668.1
Catalog No. A300-854A-T	Uniprot ID	Q08211
Lot No. A300-854A-T-2	GeneID	1660

---

<b>APPLICATIONS</b>	WB, IHC
<b>SPECIES REACTIVITY</b>	Human
<b>PRESUMED REACTIVITY</b>	Based on 100% sequence identity, this antibody is predicted to react with Mouse, Bovine and Orangutan
<b>AMOUNT</b>	10 µl
<b>CONCENTRATION</b>	200 µg/ml
<b>STORAGE/SHELF LIFE</b>	2 - 8°C / 1 year from date of receipt
<b>PHYSICAL STATE</b>	Liquid
<b>BUFFER</b>	Tris-buffered Saline containing 0.1% BSA and 0.09% Sodium Azide
<b>ISOTYPE</b>	IgG
<b>ORIGIN</b>	USA
<b>PRODUCTION PROCEDURES</b>	Antibody was affinity purified using an epitope specific to DHX9 immobilized on solid support.

The epitope recognized by A300-854A-T maps to a region between residue 200 and 250 of human DEAH (Asp-Glu-Ala-His) Box Polypeptide 9 using the numbering given in entry CAA71668.1 (GeneID 1660).

**APPLICATIONS** Centrifuge tube to remove product from lid. Optimal working dilutions should be determined experimentally by the investigator. Prepare working dilution immediately before use.

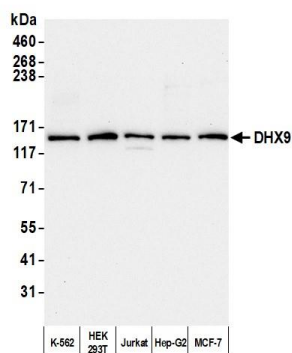
Western Blot	1:2,000 - 1:10,000
Immunoprecipitation	Not recommended. Use rabbit anti-DHX9 antibody A300-855A.
Immunohistochemistry	1:20 to 1:100. Epitope retrieval with citrate buffer pH6.0 is recommended for FFPE tissue sections.

**IHC HUMAN CONTROLS** Breast Carcinoma, Colon Carcinoma, Metastatic Lymph Node, Ovarian Carcinoma, Prostate Carcinoma, Testicular Seminoma

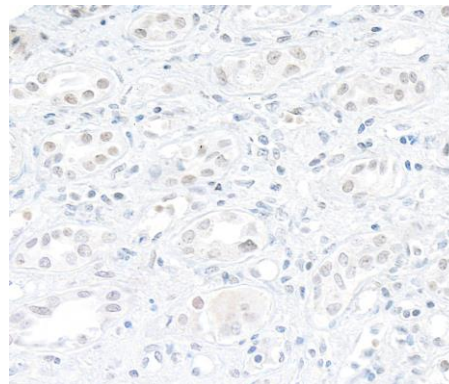
**ADDITIONAL INFO** <https://www.fortislife.com/p/A300-854A-T>

Use the link above to view SDS, a current list of citations, and other product specific information.

This document certifies that this product has met all of the quality control standards defined by Bethyl Laboratories, Inc.  
Michael Spencer, PhD Date: March 6, 2023



**Detection of human DHX9 by western blot.** *Samples:* Whole cell lysate (10  $\mu$ g) from K-562, HEK293T, Jurkat, Hep-G2, and MCF-7 cells prepared using NETN lysis buffer. *Antibody:* Affinity purified rabbit anti-DHX9 antibody (A300-854A lot 2) used for WB at 0.04  $\mu$ g/ml. *Detection:* Chemiluminescence with an exposure time of 30 seconds.



**Detection of human DHX9 by immunohistochemistry.** *Sample:* FFPE section of human Non-Hodgkins B cell lymphoma. *Antibody:* Affinity purified rabbit anti-DHX9 (A300-854A Lot 2) used at a dilution of 1:200 (1  $\mu$ g/ml). *Detection:* DAB