



SZABO SCANDIC

Part of Europa Biosite

Produktinformation



Forschungsprodukte & Biochemikalien



Zellkultur & Verbrauchsmaterial



Diagnostik & molekulare Diagnostik



Laborgeräte & Service

Weitere Information auf den folgenden Seiten!
See the following pages for more information!



Lieferung & Zahlungsart

siehe unsere [Liefer- und Versandbedingungen](#)

Zuschläge

- Mindermengenzuschlag
- Trockeneiszuschlag
- Gefahrgutzuschlag
- Expressversand

SZABO-SCANDIC HandelsgmbH

Quellenstraße 110, A-1100 Wien

T. +43(0)1 489 3961-0

F. +43(0)1 489 3961-7

mail@szabo-scandic.com

www.szabo-scandic.com

[linkedin.com/company/szaboscandic](https://www.linkedin.com/company/szaboscandic) 

JMJD2A Antibody

Rabbit Polyclonal

Antigen Affinity Purified

Protein ID NP_055478.1

Catalog No. A300-861A

GeneID 9682

Lot No. A300-861A-2



APPLICATIONS	WB, IP
SPECIES REACTIVITY	Human, Mouse
AMOUNT	100 µl
CONCENTRATION	200 µg/ml
STORAGE/SHELF LIFE	2 - 8° C / 1 year from date of receipt
PHYSICAL STATE	Liquid
BUFFER	Tris-buffered Saline containing 0.1% BSA and 0.09% Sodium Azide
ISOTYPE	IgG
ORIGIN	USA
PRODUCTION PROCEDURES	Antibody was affinity purified using an epitope specific to JMJD2A immobilized on solid support.

The epitope recognized by A300-861A maps to a region between residue 1010 and the C-terminus (residue 1064) of human Jumonji Domain Containing 2A using the numbering given in entry NP_055478.1 (GeneID 9682).

Immunoglobulin concentration was determined by extinction coefficient: absorbance at 280 nm of 1.4 equals 1.0 mg of IgG.

APPLICATIONS Centrifuge tube to remove product from lid. Optimal working dilutions should be determined experimentally by the investigator. Prepare working dilution immediately before use.

Western Blot 1:2,000 - 1:10,000

Immunoprecipitation 2 - 10 µg/mg lysate

APPLICATION NOTES Western blot of immunoprecipitates performed using Normal Pig Serum (Cat. No. S100-020), Goat anti-Rabbit Light Chain HRP Conjugate (Cat. No. A120-113P) and 4-8% SDS-PAGE (link to IP-western blot protocol in Additional Info section below).

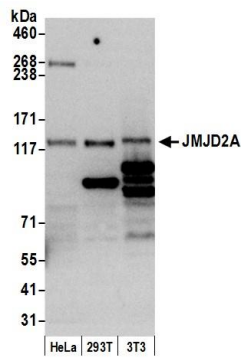
Western blot of lysates performed using standard western blot reagents and 4-8% SDS-PAGE.

ADDITIONAL INFO <https://www.bethyl.com/product/A300-861A>

Use the link above to view SDS, a current list of citations, and other product specific information.

IP-western blot protocol: https://www.bethyl.com/content/protocol_IP_WB

This document certifies that this product has met all of the quality control standards defined by Bethyl Laboratories, Inc.
Eric McIntush, PhD | Chief Scientific Officer Date: June 21, 2019

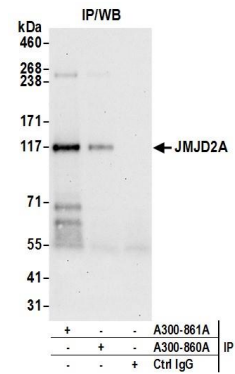


Detection of human and mouse JMJD2A by western blot.

Samples: Nuclear extract (50 µg) from HeLa, HEK293T, and mouse NIH 3T3 cells prepared using NETN lysis buffer.

Antibody: Affinity purified rabbit anti-JMJD2A antibody A300-861A (lot A300-861A-2) used for WB at 0.1 µg/ml.

Detection: Chemiluminescence with an exposure time of 3 minutes.



Detection of human JMJD2A by western blot of immunoprecipitates.

Samples: Nuclear Extract (1 mg for IP; 20% of IP loaded) from HEK293T cells. **Antibodies:** Affinity purified rabbit anti-JMJD2A antibody A300-861A (lot A300-861A-2) used for IP at 6 µg per reaction. JMJD2A was also immunoprecipitated by rabbit anti-JMJD2A antibody A300-860A. For blotting immunoprecipitated JMJD2A, A300-861A was used at 1 µg/ml. **Detection:** Chemiluminescence with an exposure time of 30 seconds.