



# SZABO SCANDIC

Part of Europa Biosite

## Produktinformation



Forschungsprodukte & Biochemikalien



Zellkultur & Verbrauchsmaterial



Diagnostik & molekulare Diagnostik



Laborgeräte & Service

Weitere Information auf den folgenden Seiten!  
See the following pages for more information!



### Lieferung & Zahlungsart

siehe unsere [Liefer- und Versandbedingungen](#)

### Zuschläge

- Mindermengenzuschlag
- Trockeneiszuschlag
- Gefahrgutzuschlag
- Expressversand

### SZABO-SCANDIC HandelsgmbH

Quellenstraße 110, A-1100 Wien

T. +43(0)1 489 3961-0

F. +43(0)1 489 3961-7

[mail@szabo-scandic.com](mailto:mail@szabo-scandic.com)

[www.szabo-scandic.com](http://www.szabo-scandic.com)

[linkedin.com/company/szaboscandic](https://www.linkedin.com/company/szaboscandic) 

# RBM9 Antibody

Rabbit Polyclonal

Antigen Affinity Purified Protein ID NP\_055124.1

Catalog No. A300-864A-T GeneID 23543

Lot No. A300-864A-T-4

---

<b>APPLICATIONS</b>	WB, IP, IHC
<b>SPECIES REACTIVITY</b>	Human, Mouse, Rat
<b>AMOUNT</b>	20 µl (2 blots)
<b>CONCENTRATION</b>	100 µg/ml
<b>STORAGE/SHELF LIFE</b>	2 - 8° C / 1 year from date of receipt
<b>PHYSICAL STATE</b>	Liquid
<b>BUFFER</b>	Tris-buffered Saline containing 0.1% BSA and 0.09% Sodium Azide
<b>ISOTYPE</b>	IgG
<b>ORIGIN</b>	USA
<b>PRODUCTION PROCEDURES</b>	Antibody was affinity purified using an epitope specific to RBM9 immobilized on solid support.

The epitope recognized by A300-864A-T maps to a region between residue 1 and 50 of human RNA Binding Motif Protein 9 using the numbering given in entry NP\_055124.1 (GeneID 23543).

**APPLICATIONS** Centrifuge tube to remove product from lid. Optimal working dilutions should be determined experimentally by the investigator. Prepare working dilution immediately before use.

Western Blot 1:1000

Immunoprecipitation The antibody contained within A300-864A-T has been qualified for use in immunoprecipitation; however, we recommend using the alternative formulation of this antibody found as product A300-864A.

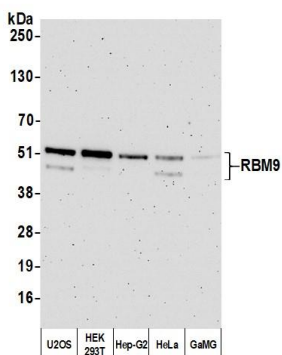
Immunohistochemistry 1:200 to 1:1,000. Epitope retrieval with citrate buffer pH6.0 is recommended for FFPE tissue sections.

**ADDITIONAL INFO** <https://www.bethyl.com/product/A300-864A-T>

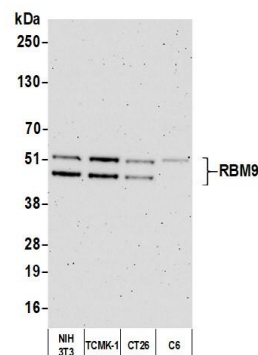
Use the link above to view SDS, a current list of citations, and other product specific information.

IP-western blot protocol: [https://www.bethyl.com/content/protocol\\_IP\\_WB](https://www.bethyl.com/content/protocol_IP_WB)

This document certifies that this product has met all of the quality control standards defined by Bethyl Laboratories, Inc.  
Michael Spencer, PhD Date: September 9, 2021



**Detection of human RBM9 by western blot.** *Samples:* Whole cell lysate (10  $\mu$ g) from U2OS, HEK293T, Hep-G2, HeLa, and GaMG cells prepared using NETN lysis buffer. *Antibody:* Affinity purified rabbit anti-RBM9 antibody (A300-864A-T lot 4) used for WB at 1:1000. *Detection:* Chemiluminescence with an exposure time of 3 minutes.



**Detection of human RBM9 by western blot.** *Samples:* Whole cell lysate (10  $\mu$ g) from NIH 3T3, TCMK-1, CT26, and C6 cells prepared using NETN lysis buffer. *Antibody:* Affinity purified rabbit anti-RBM9 antibody A300-864A (lot A300-864A-T-4) used for WB at 1:1000. *Detection:* Chemiluminescence with an exposure time of 3 minutes.