



SZABO SCANDIC

Part of Europa Biosite

Produktinformation



Forschungsprodukte & Biochemikalien



Zellkultur & Verbrauchsmaterial



Diagnostik & molekulare Diagnostik



Laborgeräte & Service

Weitere Information auf den folgenden Seiten!
See the following pages for more information!



Lieferung & Zahlungsart

siehe unsere [Liefer- und Versandbedingungen](#)

Zuschläge

- Mindermengenzuschlag
- Trockeneiszuschlag
- Gefahrgutzuschlag
- Expressversand

SZABO-SCANDIC HandelsgmbH

Quellenstraße 110, A-1100 Wien

T. +43(0)1 489 3961-0

F. +43(0)1 489 3961-7

mail@szabo-scandic.com

www.szabo-scandic.com

[linkedin.com/company/szaboscandic](https://www.linkedin.com/company/szaboscandic) 

KIF20A/RAB6KIFL Antibody

Rabbit Polyclonal

Antigen Affinity Purified Protein ID NP_005724.1
Catalog No. A300-878A-T GeneID 10112
Lot No. A300-878A-T-1



APPLICATIONS IP
SPECIES REACTIVITY Human
AMOUNT 10 µl
CONCENTRATION 1000 µg/ml
STORAGE/SHELF LIFE 2 - 8° C / 1 year from date of receipt
PHYSICAL STATE Liquid
BUFFER Tris-citrate/phosphate buffer, pH 7 to 8 containing 0.09% Sodium Azide
ISOTYPE IgG
ORIGIN USA
PRODUCTION PROCEDURES Antibody was affinity purified using an epitope specific to KIF20A/RAB6KIFL immobilized on solid support.

The epitope recognized by A300-878A-T maps to a region between residue 50 and 100 of human Kinesin Family Member 20A (RAB6 Interacting, Kinesin-Like) using the numbering given in entry NP_005724.1 (GeneID 10112).

Immunoglobulin concentration was determined by extinction coefficient: absorbance at 280 nm of 1.4 equals 1.0 mg of IgG.

APPLICATIONS Centrifuge tube to remove product from lid. Optimal working dilutions should be determined experimentally by the investigator. Prepare working dilution immediately before use.

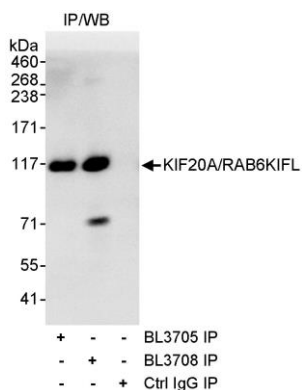
Western Blot Not recommended. Use rabbit anti-KIF20A/RAB6KIFL antibody A300-879A-T.

Immunoprecipitation 2 - 5 µg/mg lysate

APPLICATION NOTES Western blot of immunoprecipitates performed using Normal Pig Serum (Cat. No. S100-020), Goat anti-Rabbit Light Chain HRP Conjugate (Cat. No. A120-113P) and 4-8% SDS-PAGE (link to IP-western blot protocol in Additional Info section below).

ADDITIONAL INFO <https://www.bethyl.com/product/A300-878A-T>
Use the link above to view SDS, a current list of citations, and other product specific information.
IP-western blot protocol: https://www.bethyl.com/content/protocol_IP_WB

This document certifies that this product has met all of the quality control standards defined by Bethyl Laboratories, Inc.
Eric McIntush, PhD | Chief Scientific Officer Date: June 21, 2019



Detection of human KIF20A/RAB6KIFL by western blot of immunoprecipitates. *Samples:* Whole cell lysate (1 mg for IP, 20% of IP loaded) from HeLa cells. *Antibody:* Affinity purified rabbit anti-KIF20A/RAB6KIFL antibody BL3705 (Cat. No. A300-878A-T) used for IP at 3 µg/mg lysate. KIF20A/RAB6KIFL was also immunoprecipitated by rabbit anti-KIF20A/RAB6KIFL antibody BL3708 (Cat. No. A300-879A), which recognizes a downstream epitope. For blotting immunoprecipitated KIF20A/RAB6KIFL, BL3608 was used at 1 µg/ml. *Detection:* Chemiluminescence with an exposure time of 10 seconds.