



SZABO SCANDIC

Part of Europa Biosite

Produktinformation



Forschungsprodukte & Biochemikalien



Zellkultur & Verbrauchsmaterial



Diagnostik & molekulare Diagnostik



Laborgeräte & Service

Weitere Information auf den folgenden Seiten!
See the following pages for more information!



Lieferung & Zahlungsart

siehe unsere [Liefer- und Versandbedingungen](#)

Zuschläge

- Mindermengenzuschlag
- Trockeneiszuschlag
- Gefahrgutzuschlag
- Expressversand

SZABO-SCANDIC HandelsgmbH

Quellenstraße 110, A-1100 Wien

T. +43(0)1 489 3961-0

F. +43(0)1 489 3961-7

mail@szabo-scandic.com

www.szabo-scandic.com

[linkedin.com/company/szaboscandic](https://www.linkedin.com/company/szaboscandic) 

COP1 /RFD2 Antibody

Rabbit Polyclonal

Antigen Affinity Purified

Protein ID NP_071902.2

Catalog No. A300-894A

GeneID 64326

Lot No. A300-894A-3



APPLICATIONS	WB, IP
SPECIES REACTIVITY	Human, Mouse
AMOUNT	100 µl
CONCENTRATION	200 µg/ml
STORAGE/SHELF LIFE	2 - 8° C / 1 year from date of receipt
PHYSICAL STATE	Liquid
BUFFER	Tris-buffered Saline containing 0.1% BSA and 0.09% Sodium Azide
ISOTYPE	IgG
ORIGIN	USA
PRODUCTION PROCEDURES	Antibody was affinity purified using an epitope specific to COP1 /RFD2 immobilized on solid support.

The epitope recognized by A300-894A maps to a region between residue 1 and 50 of human Constitutive Photomorphogenic Protein-1 /Ring Finger and WD Repeat Domain 2 using the numbering given in entry NP_071902.2 (GeneID 64326).

Immunoglobulin concentration was determined by extinction coefficient: absorbance at 280 nm of 1.4 equals 1.0 mg of IgG.

APPLICATIONS Centrifuge tube to remove product from lid. Optimal working dilutions should be determined experimentally by the investigator. Prepare working dilution immediately before use.

Western Blot 1:2,000 - 1:10,000

Immunoprecipitation 2 - 10 µg/mg lysate

APPLICATION NOTES Western blot of immunoprecipitates performed using Normal Pig Serum (Cat. No. S100-020), Goat anti-Rabbit Light Chain HRP Conjugate (Cat. No. A120-113P) and 4-8% SDS-PAGE (link to IP-western blot protocol in Additional Info section below).

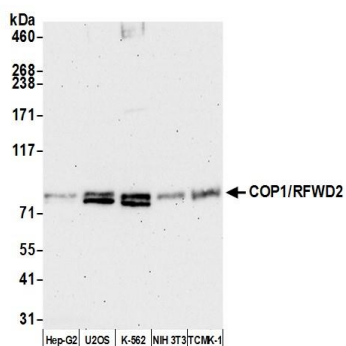
Western blot of lysates performed using standard western blot reagents and 4-8% SDS-PAGE.

ADDITIONAL INFO <https://www.bethyl.com/product/A300-894A>

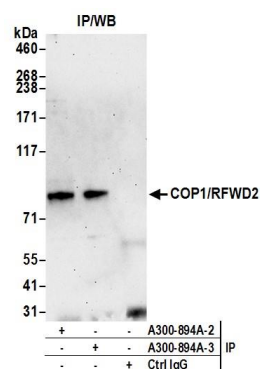
Use the link above to view SDS, a current list of citations, and other product specific information.

IP-western blot protocol: https://www.bethyl.com/content/protocol_IP_WB

This document certifies that this product has met all of the quality control standards defined by Bethyl Laboratories, Inc.
Eric McIntush, PhD | Chief Scientific Officer Date: June 24, 2019



Detection of human and mouse COP1/RFWD2 by western blot. *Samples:* Whole cell lysate (50 µg) from Hep-G2, U2OS, K-562, NIH 3T3, and TCMK-1 cells prepared using NETN lysis buffer. *Antibody:* Affinity purified rabbit anti-COP1/RFWD2 antibody A300-894A (lot A300-894A-3) used for WB at 0.1 µg/ml. *Detection:* Chemiluminescence with an exposure time of 75 seconds.



Detection of human COP1/RFWD2 by western blot of immunoprecipitates. *Samples:* Whole cell lysate (1.0 mg per IP reaction; 20% of IP loaded) from Hep-G2 cells prepared using NETN lysis buffer. *Antibodies:* Affinity purified rabbit anti-COP1/RFWD2 antibody A300-894A (lot A300-894A-3) used for IP at 6 µg per reaction. COP1/RFWD2 was also immunoprecipitated by a previous lot of this antibody (lot A300-894A-2). For blotting immunoprecipitated COP1/RFWD2, A300-894A was used at 0.04 µg/ml. *Detection:* Chemiluminescence with an exposure time of 75 seconds.