



# SZABO SCANDIC

Part of Europa Biosite

## Produktinformation



Forschungsprodukte & Biochemikalien



Zellkultur & Verbrauchsmaterial



Diagnostik & molekulare Diagnostik



Laborgeräte & Service

Weitere Information auf den folgenden Seiten!  
See the following pages for more information!



### Lieferung & Zahlungsart

siehe unsere [Liefer- und Versandbedingungen](#)

### Zuschläge

- Mindermengenzuschlag
- Trockeneiszuschlag
- Gefahrgutzuschlag
- Expressversand

### SZABO-SCANDIC HandelsgmbH

Quellenstraße 110, A-1100 Wien

T. +43(0)1 489 3961-0

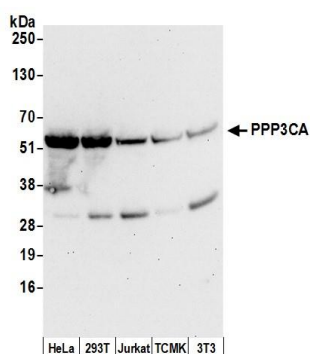
F. +43(0)1 489 3961-7

[mail@szabo-scandic.com](mailto:mail@szabo-scandic.com)

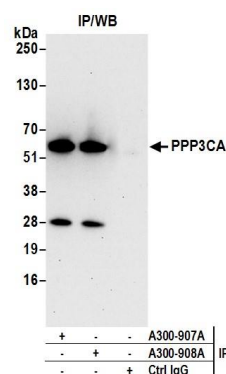
[www.szabo-scandic.com](http://www.szabo-scandic.com)

[linkedin.com/company/szaboscandic](https://www.linkedin.com/company/szaboscandic) 

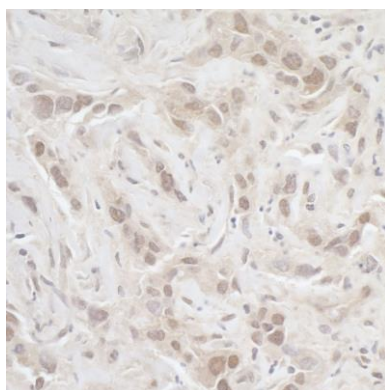




**Detection of human and mouse PPP3CA by western blot.**  
*Samples:* Whole cell lysate (50 µg) from HeLa, HEK293T, Jurkat, mouse TCMK-1, and mouse NIH 3T3 cells prepared using NETN lysis buffer. *Antibody:* Affinity purified rabbit anti-PPP3CA antibody A300-908A (lot A300-908A-3) used for WB at 0.1 µg/ml. *Detection:* Chemiluminescence with an exposure time of 30 seconds.



**Detection of human PPP3CA by western blot of immunoprecipitates.** *Samples:* Whole cell lysate (1.0 mg per IP reaction; 20% of IP loaded) from HeLa cells prepared using NETN lysis buffer. *Antibodies:* Affinity purified rabbit anti-PPP3CA antibody A300-908A (lot A300-908A-3) used for IP at 3 µg per reaction. PPP3CA was also immunoprecipitated by rabbit anti-PPP3CA antibody A300-907A. For blotting immunoprecipitated PPP3CA, A300-908A was used at 1 µg/ml. *Detection:* Chemiluminescence with an exposure time of 30 seconds.



**Detection of human PPP3CA by immunohistochemistry.**  
*Sample:* FFPE section of human breast carcinoma.  
*Antibody:* Affinity purified rabbit anti-PPP3CA (Cat. No. A300-908A Lot3) used at a dilution of 1:1,000 (1 µg/ml).  
*Detection:* DAB