



# SZABO SCANDIC

Part of Europa Biosite

## Produktinformation



Forschungsprodukte & Biochemikalien



Zellkultur & Verbrauchsmaterial



Diagnostik & molekulare Diagnostik



Laborgeräte & Service

Weitere Information auf den folgenden Seiten!  
See the following pages for more information!



### Lieferung & Zahlungsart

siehe unsere [Liefer- und Versandbedingungen](#)

### Zuschläge

- Mindermengenzuschlag
- Trockeneiszuschlag
- Gefahrgutzuschlag
- Expressversand

### SZABO-SCANDIC HandelsgmbH

Quellenstraße 110, A-1100 Wien

T. +43(0)1 489 3961-0

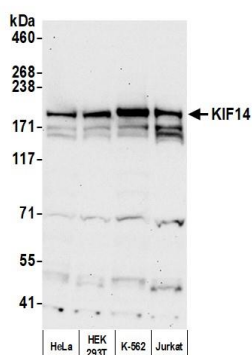
F. +43(0)1 489 3961-7

[mail@szabo-scandic.com](mailto:mail@szabo-scandic.com)

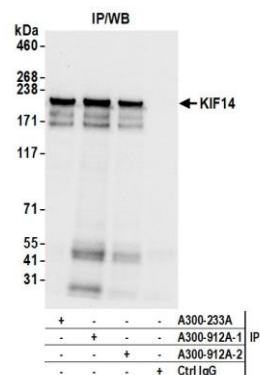
[www.szabo-scandic.com](http://www.szabo-scandic.com)

[linkedin.com/company/szaboscandic](https://www.linkedin.com/company/szaboscandic)

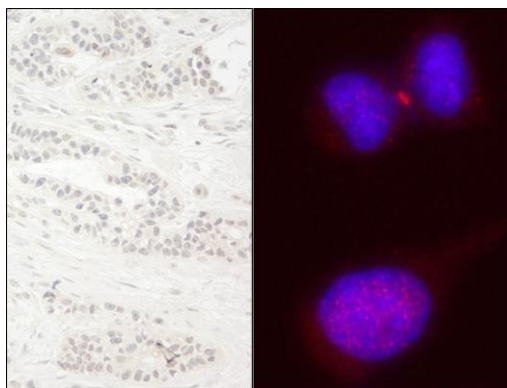




**Detection of human KIF14 by western blot.** *Samples:* Whole cell lysate (25  $\mu$ g) from HeLa, HEK293T, K-562, and Jurkat cells prepared using NETN lysis buffer. *Antibody:* Affinity purified rabbit anti-KIF14 antibody (A300-912A lot 2) used for WB at 0.1  $\mu$ g/ml. *Detection:* Chemiluminescence with an exposure time of 30 seconds.



**Detection of human KIF14 by western blot of immunoprecipitates.** *Samples:* Whole cell lysate (1.0 mg per IP reaction; 20% of IP loaded) from HeLa cells prepared using NETN lysis buffer. *Antibodies:* Affinity purified rabbit anti-KIF14 antibody (A300-912A lot 2) used for IP at 6  $\mu$ g per reaction. KIF14 was also immunoprecipitated by a previous lot of this antibody (A300-912A lot 1) and a second antibody against a different epitope of KIF14 (A300-233A). For blotting immunoprecipitated KIF14, A300-912A was used at 0.04  $\mu$ g/ml. *Detection:* Chemiluminescence with an exposure time of 3 seconds.



**Detection of human KIF14 by immunohistochemistry and immunocytochemistry.** *Sample:* FFPE section of human breast carcinoma (left) and formaldehyde-fixed HeLa cells (right). *Antibody:* Affinity purified rabbit anti-KIF14 (Cat. No. A300-912A Lot1) used at a dilution of 1:200 (1  $\mu$ g/ml) and 1:100 (2  $\mu$ g/ml). *Detection:* DAB (left) and red-fluorescent goat anti-rabbit IgG highly cross-adsorbed Antibody used at a dilution of 1:100 (right).