



SZABO SCANDIC

Part of Europa Biosite

Produktinformation



Forschungsprodukte & Biochemikalien



Zellkultur & Verbrauchsmaterial



Diagnostik & molekulare Diagnostik



Laborgeräte & Service

Weitere Information auf den folgenden Seiten!
See the following pages for more information!



Lieferung & Zahlungsart

siehe unsere [Liefer- und Versandbedingungen](#)

Zuschläge

- Mindermengenzuschlag
- Trockeneiszuschlag
- Gefahrgutzuschlag
- Expressversand

SZABO-SCANDIC HandelsgmbH

Quellenstraße 110, A-1100 Wien

T. +43(0)1 489 3961-0

F. +43(0)1 489 3961-7

mail@szabo-scandic.com

www.szabo-scandic.com

[linkedin.com/company/szaboscandic](https://www.linkedin.com/company/szaboscandic) 

USP15 Antibody

Rabbit Polyclonal

Antigen Affinity Purified

Protein ID AAD41086.1

Catalog No. A300-923A

GeneID 9958

Lot No. A300-923A-2



APPLICATIONS	WB, IP
SPECIES REACTIVITY	Human, Mouse
PRESUMED REACTIVITY	Based on 100% sequence identity, this antibody is predicted to react with X. tropicalis and Bovine
AMOUNT	100 µl
CONCENTRATION	1000 µg/ml
STORAGE/SHELF LIFE	2 - 8° C / 1 year from date of receipt
PHYSICAL STATE	Liquid
BUFFER	Tris-citrate/phosphate buffer, pH 7 to 8 containing 0.09% Sodium Azide
ISOTYPE	IgG
ORIGIN	USA
PRODUCTION PROCEDURES	Antibody was affinity purified using an epitope specific to USP15 immobilized on solid support.

The epitope recognized by A300-923A maps to a region between residue 960 and the C-terminus of human Ubiquitin Specific Peptidase 15 using the numbering given in entry AAD41086.1 (GeneID 9958).

Immunoglobulin concentration was determined by extinction coefficient: absorbance at 280 nm of 1.4 equals 1.0 mg of IgG.

APPLICATIONS Centrifuge tube to remove product from lid. Optimal working dilutions should be determined experimentally by the investigator. Prepare working dilution immediately before use.

Western Blot 1:2,000 - 1:10,000

Immunoprecipitation 2 - 10 µg/mg lysate.

IHC HUMAN CONTROLS Colon Carcinoma, Ovarian Carcinoma

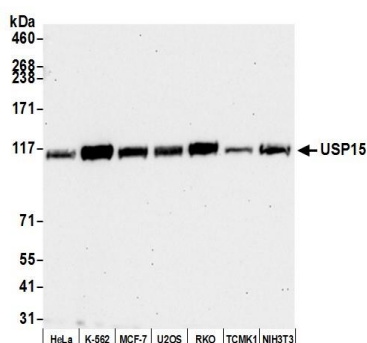
IHC MOUSE CONTROLS Renal Cell Carcinoma, Teratoma

ADDITIONAL INFO <https://www.bethyl.com/product/A300-923A>

Use the link above to view SDS, a current list of citations, and other product specific information.

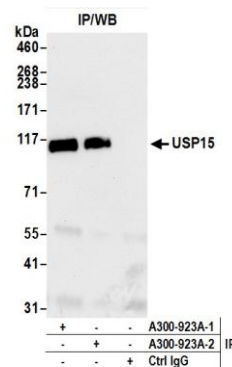
IP-western blot protocol: https://www.bethyl.com/content/protocol_IP_WB

This document certifies that this product has met all of the quality control standards defined by Bethyl Laboratories, Inc.
Eric McIntush, PhD | Chief Scientific Officer Date: May 29, 2020



Detection of human and mouse USP15 by western blot.

Samples: Whole cell lysate (50 μ g) from HeLa, K-562, MCF-7, U2OS, RKO, TCMK-1, and NIH 3T3 cells prepared using NETN lysis buffer. **Antibody:** Affinity purified rabbit anti-USP15 antibody A300-923A (lot A300-923A-2) used for WB at 0.1 μ g/ml. **Detection:** Chemiluminescence with an exposure time of 30 seconds.



Detection of human USP15 by western blot of immunoprecipitates.

Samples: Whole cell lysate (1.0 mg per IP reaction; 20% of IP loaded) from HeLa cells prepared using NETN lysis buffer. **Antibodies:** Affinity purified rabbit anti-USP15 antibody A300-923A (lot A300-923A-2) used for IP at 6 μ g per reaction. USP15 was also immunoprecipitated by a previous lot of this antibody (lot A300-923A-1). For blotting immunoprecipitated USP15, A300-923A was used at 0.04 μ g/ml. **Detection:** Chemiluminescence with an exposure time of 10 seconds.