



SZABO SCANDIC

Part of Europa Biosite

Produktinformation



Forschungsprodukte & Biochemikalien



Zellkultur & Verbrauchsmaterial



Diagnostik & molekulare Diagnostik



Laborgeräte & Service

Weitere Information auf den folgenden Seiten!
See the following pages for more information!



Lieferung & Zahlungsart

siehe unsere [Liefer- und Versandbedingungen](#)

Zuschläge

- Mindermengenzuschlag
- Trockeneiszuschlag
- Gefahrgutzuschlag
- Expressversand

SZABO-SCANDIC HandelsgmbH

Quellenstraße 110, A-1100 Wien

T. +43(0)1 489 3961-0

F. +43(0)1 489 3961-7

mail@szabo-scandic.com

www.szabo-scandic.com

[linkedin.com/company/szaboscandic](https://www.linkedin.com/company/szaboscandic) 

USP33 Antibody

Rabbit Polyclonal

Antigen Affinity Purified	RefSeq ID	NP_055832.3
Catalog No. A300-925A-T	Uniprot ID	Q8TEY7
Lot No. 1	GeneID	23032

APPLICATIONS	WB, IP, IHC
SPECIES REACTIVITY	Human
PRESUMED REACTIVITY	Based on 100% sequence identity, this antibody is predicted to react with Mouse, Bovine and Orangutan
AMOUNT	10 µl
CONCENTRATION	1000 µg/ml
STORAGE/SHELF LIFE	2 – 8°C / 1 year from date of receipt
PHYSICAL STATE	Liquid
BUFFER	Tris-citrate/phosphate buffer, pH 7 to 8 containing 0.09% Sodium Azide
ISOTYPE	IgG
ORIGIN	USA
PRODUCTION PROCEDURES	Antibody was affinity purified using an epitope specific to USP33 immobilized on solid support.

The epitope recognized by A300-925A maps to a region between residue 900 and the C-terminus (residue 942) of human Ubiquitin Specific Peptidase 33 using the numbering given in entry NP_055832.3 (GeneID 23032).

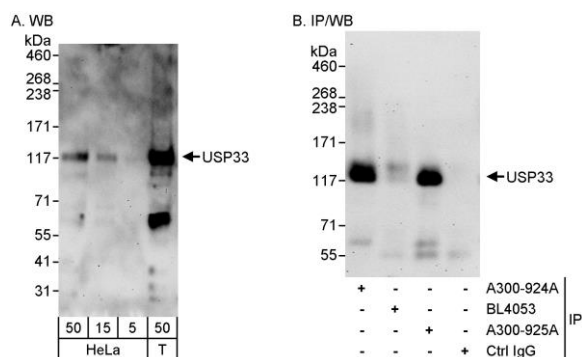
Immunoglobulin concentration was determined using Beer's Law where 1 mg/mL IgG has an A280 of 1.4.

APPLICATIONS	Centrifuge tube to remove product from lid. Optimal working dilutions should be determined experimentally by the investigator. Prepare working dilution immediately before use.
	Western Blot 1:2000 – 1:10,000
	Immunoprecipitation 6 µg/mg lysate
	Immunohistochemistry 1:500 – 1:2000. Epitope retrieval with Tris-EDTA pH 9.0 is recommended for FFPE tissue sections.

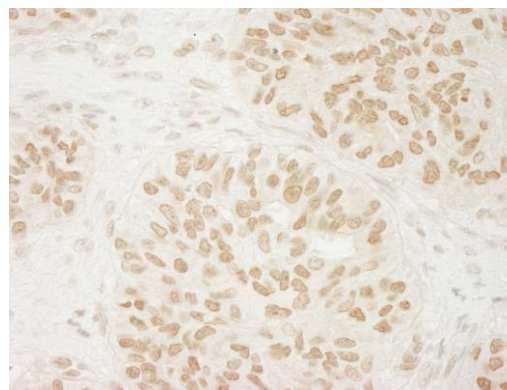
IHC HUMAN CONTROLS	Breast Carcinoma, Ovarian Carcinoma, Prostate Carcinoma
---------------------------	---------------------------------------------------------

ADDITIONAL INFO	https://www.fortislife.com/p/A300-925A-T Use the link above to view SDS, a current list of citations, and other product specific information.
------------------------	---------------------------------------------------------------------------------------------------------------------------------------------------------------------------------------------------------

This document certifies that this product has met all of the quality control standards defined by Bethyl Laboratories, Inc.
Michael Spencer, PhD Date: January 31, 2024



Detection of human USP33 by western blot and immunoprecipitation. *Samples:* Whole cell lysate from HeLa (5, 15 and 50 µg for WB; 1 mg for IP, 20% of IP loaded) and HEK293T (T; 50 µg) cells. *Antibodies:* Affinity purified rabbit anti-USP33 antibody A300-925A used for WB at 1 µg/ml (A and B) and used for IP at 3 µg/mg lysate (B). USP33 was also immunoprecipitated by rabbit anti-USP33 antibody A300-924A, which recognizes an upstream epitope. *Detection:* Chemiluminescence with exposure times of 3 minutes (A and B).



Detection of human USP33 by immunohistochemistry. *Sample:* FFPE section of human ovarian carcinoma. *Antibody:* Affinity purified rabbit anti-USP33 (Cat. No. A300-925A Lot1) used at a dilution of 1:1,000 (1 µg/ml). *Detection:* DAB