



SZABO SCANDIC

Part of Europa Biosite

Produktinformation



Forschungsprodukte & Biochemikalien



Zellkultur & Verbrauchsmaterial



Diagnostik & molekulare Diagnostik



Laborgeräte & Service

Weitere Information auf den folgenden Seiten!
See the following pages for more information!



Lieferung & Zahlungsart

siehe unsere [Liefer- und Versandbedingungen](#)

Zuschläge

- Mindermengenzuschlag
- Trockeneiszuschlag
- Gefahrgutzuschlag
- Expressversand

SZABO-SCANDIC HandelsgmbH

Quellenstraße 110, A-1100 Wien

T. +43(0)1 489 3961-0

F. +43(0)1 489 3961-7

mail@szabo-scandic.com

www.szabo-scandic.com

[linkedin.com/company/szaboscandic](https://www.linkedin.com/company/szaboscandic) 

USP33 Antibody

Rabbit Polyclonal

Antigen Affinity Purified

Protein ID NP_055832.3

Catalog No. A300-925A

GeneID 23032

Lot No. A300-925A-1



APPLICATIONS	WB, IP, IHC
SPECIES REACTIVITY	Human
PRESUMED REACTIVITY	Based on 100% sequence identity, this antibody is predicted to react with Mouse, Bovine and Orangutan
AMOUNT	100 µl
CONCENTRATION	1000 µg/ml
STORAGE/SHELF LIFE	2 - 8° C / 1 year from date of receipt
PHYSICAL STATE	Liquid
BUFFER	Tris-citrate/phosphate buffer, pH 7 to 8 containing 0.09% Sodium Azide
ISOTYPE	IgG
ORIGIN	USA
PRODUCTION PROCEDURES	Antibody was affinity purified using an epitope specific to USP33 immobilized on solid support.

The epitope recognized by A300-925A maps to a region between residue 900 and the C-terminus (residue 942) of human Ubiquitin Specific Peptidase 33 using the numbering given in entry NP_055832.3 (GeneID 23032).

Immunoglobulin concentration was determined by extinction coefficient: absorbance at 280 nm of 1.4 equals 1.0 mg of IgG.

APPLICATIONS Centrifuge tube to remove product from lid. Optimal working dilutions should be determined experimentally by the investigator. Prepare working dilution immediately before use.

Western Blot 1:2,000 - 1:10,000

Immunoprecipitation 2 - 5 µg/mg lysate

Immunohistochemistry 1:500 - 1:2,000. Epitope retrieval with Tris-EDTA pH 9.0 is recommended for FFPE tissue sections.

APPLICATION NOTES Western blot of immunoprecipitates performed using Normal Pig Serum (Cat. No. S100-020), Goat anti-Rabbit Light Chain HRP Conjugate (Cat. No. A120-113P) and 4-8% SDS-PAGE (link to IP-western blot protocol in Additional Info section below).

Western blot of lysates performed using standard western blot reagents and 4-8% SDS-PAGE.

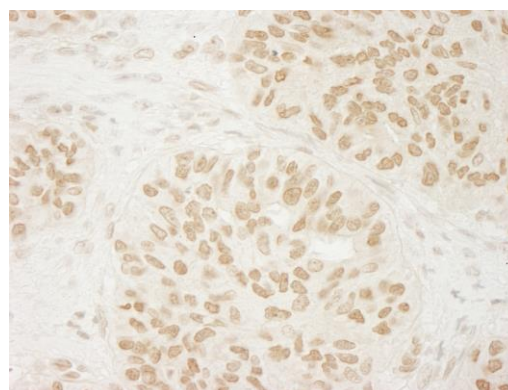
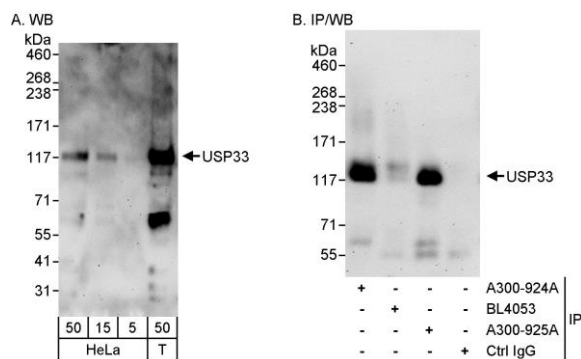
IHC HUMAN CONTROLS Breast Carcinoma, Ovarian Carcinoma, Prostate Carcinoma

ADDITIONAL INFO <https://www.bethyl.com/product/A300-925A>

Use the link above to view SDS, a current list of citations, and other product specific information.

IP-western blot protocol: https://www.bethyl.com/content/protocol_IP_WB

This document certifies that this product has met all of the quality control standards defined by Bethyl Laboratories, Inc.
Eric McIntush, PhD | Chief Scientific Officer Date: June 21, 2019



Detection of human USP33 by western blot and immunoprecipitation. *Samples:* Whole cell lysate from HeLa (5, 15 and 50 µg for WB; 1 mg for IP, 20% of IP loaded) and HEK293T (T; 50 µg) cells. *Antibodies:* Affinity purified rabbit anti-USP33 antibody A300-925A used for WB at 1 µg/ml (A and B) and used for IP at 3 µg/mg lysate (B). USP33 was also immunoprecipitated by rabbit anti-USP33 antibody A300-924A, which recognizes an upstream epitope. *Detection:* Chemiluminescence with exposure times of 3 minutes (A and B).

Detection of human USP33 by immunohistochemistry. *Sample:* FFPE section of human ovarian carcinoma. *Antibody:* Affinity purified rabbit anti-USP33 (Cat. No. A300-925A Lot1) used at a dilution of 1:1,000 (1 µg/ml). *Detection:* DAB