



# SZABO SCANDIC

Part of Europa Biosite

## Produktinformation



Forschungsprodukte & Biochemikalien



Zellkultur & Verbrauchsmaterial



Diagnostik & molekulare Diagnostik



Laborgeräte & Service

Weitere Information auf den folgenden Seiten!  
See the following pages for more information!



### Lieferung & Zahlungsart

siehe unsere [Liefer- und Versandbedingungen](#)

### Zuschläge

- Mindermengenzuschlag
- Trockeneiszuschlag
- Gefahrgutzuschlag
- Expressversand

### SZABO-SCANDIC HandelsgmbH

Quellenstraße 110, A-1100 Wien

T. +43(0)1 489 3961-0

F. +43(0)1 489 3961-7

[mail@szabo-scandic.com](mailto:mail@szabo-scandic.com)

[www.szabo-scandic.com](http://www.szabo-scandic.com)

[linkedin.com/company/szaboscandic](https://www.linkedin.com/company/szaboscandic) 

# USP37 Antibody

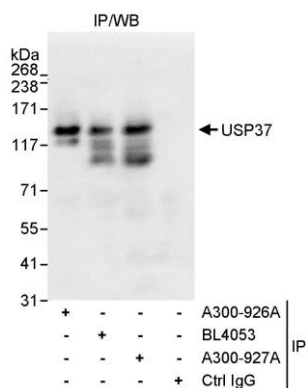
Rabbit Polyclonal

Antigen Affinity Purified	Protein ID	NP_065986.1
Catalog No. A300-926A-T	GeneID	57695
Lot No. A300-926A-T-1		

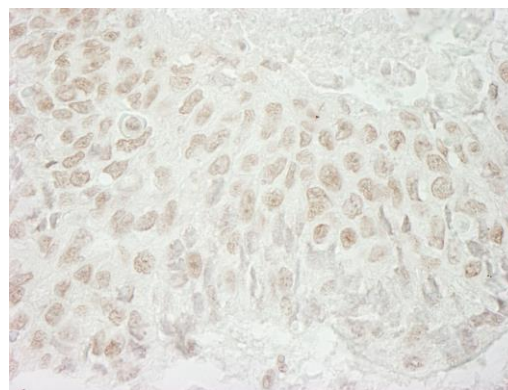


<b>APPLICATIONS</b>	IP, IHC						
<b>SPECIES REACTIVITY</b>	Human						
<b>PRESUMED REACTIVITY</b>	Based on 100% sequence identity, this antibody is predicted to react with Dog						
<b>AMOUNT</b>	10 µl						
<b>CONCENTRATION</b>	1000 µg/ml						
<b>STORAGE/SHELF LIFE</b>	2 - 8° C / 1 year from date of receipt						
<b>PHYSICAL STATE</b>	Liquid						
<b>BUFFER</b>	Tris-citrate/phosphate buffer, pH 7 to 8 containing 0.09% Sodium Azide						
<b>ISOTYPE</b>	IgG						
<b>ORIGIN</b>	USA						
<b>PRODUCTION PROCEDURES</b>	<p>Antibody was affinity purified using an epitope specific to USP37 immobilized on solid support.</p> <p>The epitope recognized by A300-926A-T maps to a region between residue 125 and 175 of human Ubiquitin Specific Peptidase 37 using the numbering given in entry NP_065986.1 (GeneID 57695).</p> <p>Immunoglobulin concentration was determined by extinction coefficient: absorbance at 280 nm of 1.4 equals 1.0 mg of IgG.</p>						
<b>APPLICATIONS</b>	<p>Centrifuge tube to remove product from lid. Optimal working dilutions should be determined experimentally by the investigator. Prepare working dilution immediately before use.</p> <table><tr><td>Western Blot</td><td>Not recommended. Use rabbit anti-USP37 antibody A300-927A-T.</td></tr><tr><td>Immunoprecipitation</td><td>2 - 5 µg/mg lysate</td></tr><tr><td>Immunohistochemistry</td><td>1:500 - 1:2,000. Epitope retrieval with Tris-EDTA pH 9.0 is recommended for FFPE tissue sections.</td></tr></table>	Western Blot	Not recommended. Use rabbit anti-USP37 antibody A300-927A-T.	Immunoprecipitation	2 - 5 µg/mg lysate	Immunohistochemistry	1:500 - 1:2,000. Epitope retrieval with Tris-EDTA pH 9.0 is recommended for FFPE tissue sections.
Western Blot	Not recommended. Use rabbit anti-USP37 antibody A300-927A-T.						
Immunoprecipitation	2 - 5 µg/mg lysate						
Immunohistochemistry	1:500 - 1:2,000. Epitope retrieval with Tris-EDTA pH 9.0 is recommended for FFPE tissue sections.						
<b>APPLICATION NOTES</b>	Western blot of immunoprecipitates performed using Normal Pig Serum (Cat. No. S100-020), Goat anti-Rabbit Light Chain HRP Conjugate (Cat. No. A120-113P) and 4-8% SDS-PAGE (link to IP-western blot protocol in Additional Info section below).						
<b>ADDITIONAL INFO</b>	<p><a href="https://www.bethyl.com/product/A300-926A-T">https://www.bethyl.com/product/A300-926A-T</a></p> <p>Use the link above to view SDS, a current list of citations, and other product specific information. IP-western blot protocol: <a href="https://www.bethyl.com/content/protocol_IP_WB">https://www.bethyl.com/content/protocol_IP_WB</a></p>						

This document certifies that this product has met all of the quality control standards defined by Bethyl Laboratories, Inc.  
Eric McIntush, PhD | Chief Scientific Officer Date: June 21, 2019



**Detection of human USP37 by western blot of immunoprecipitates.** *Samples:* Whole cell lysate (1 mg for IP, 20% of IP loaded) from HeLa cells. *Antibody:* Affinity purified rabbit anti-USP37 antibody A300-926A-T used for IP at 3 µg/mg lysate. USP37 was also immunoprecipitated by rabbit anti-USP37 antibody A300-927A, which recognizes a downstream epitope. For blotting immunoprecipitated USP37, A300-927A was used at 1 µg/ml. *Detection:* Chemiluminescence with an exposure time of 10 seconds.



**Detection of human USP37 by immunohistochemistry.** *Samples:* FFPE section of human non-small cell lung cancer. *Antibody:* Affinity purified rabbit anti-USP37 (Cat. No. A300-926A-T Lot1) used at a dilution of 1:1,000 (1 µg/ml). *Detection:* DAB.