



# SZABO SCANDIC

Part of Europa Biosite

## Produktinformation



Forschungsprodukte & Biochemikalien



Zellkultur & Verbrauchsmaterial



Diagnostik & molekulare Diagnostik



Laborgeräte & Service

Weitere Information auf den folgenden Seiten!  
See the following pages for more information!



### Lieferung & Zahlungsart

siehe unsere [Liefer- und Versandbedingungen](#)

### Zuschläge

- Mindermengenzuschlag
- Trockeneiszuschlag
- Gefahrgutzuschlag
- Expressversand

### SZABO-SCANDIC HandelsgmbH

Quellenstraße 110, A-1100 Wien

T. +43(0)1 489 3961-0

F. +43(0)1 489 3961-7

[mail@szabo-scandic.com](mailto:mail@szabo-scandic.com)

[www.szabo-scandic.com](http://www.szabo-scandic.com)

[linkedin.com/company/szaboscandic](https://www.linkedin.com/company/szaboscandic) 

# Coronin 1 Antibody

Rabbit Polyclonal

Antigen Affinity Purified Protein ID NP\_009005.1

Catalog No. A300-931A-T GeneID 11151

Lot No. A300-931A-T-1



<b>APPLICATIONS</b>	WB, IP, IHC
<b>SPECIES REACTIVITY</b>	Human, Mouse
<b>PRESUMED REACTIVITY</b>	Based on 100% sequence identity, this antibody is predicted to react with Rat and Bovine
<b>AMOUNT</b>	20 µl (2 blots)
<b>CONCENTRATION</b>	40 µg/ml
<b>STORAGE/SHELF LIFE</b>	2 - 8° C / 1 year from date of receipt
<b>PHYSICAL STATE</b>	Liquid
<b>BUFFER</b>	Tris-buffered Saline containing 0.1% BSA and 0.09% Sodium Azide
<b>ISOTYPE</b>	IgG
<b>ORIGIN</b>	USA
<b>PRODUCTION PROCEDURES</b>	Antibody was affinity purified using an epitope specific to Coronin 1 immobilized on solid support.

The epitope recognized by A300-931A-T maps to a region between residue 250 and 300 of human Coronin 1 (Coronin, Actin Binding Protein 1A) using the numbering given in entry NP\_009005.1 (GeneID 11151).

**APPLICATIONS** Centrifuge tube to remove product from lid. Optimal working dilutions should be determined experimentally by the investigator. Prepare working dilution immediately before use.

Western Blot 1:1000

Immunoprecipitation The antibody contained within A300-931A-T has been qualified for use in immunoprecipitation; however, we recommend using the alternative formulation of this antibody found as product A300-931A.

Immunohistochemistry 1:100 - 1:400. Epitope retrieval with citrate buffer pH 6.0 is recommended for FFPE tissue sections.

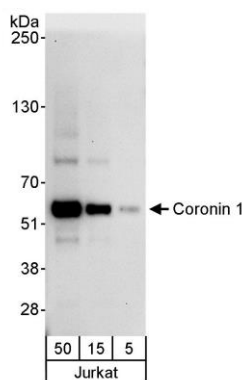
**APPLICATION NOTES** Western blot of immunoprecipitates performed using Normal Pig Serum (Cat. No. S100-020), Goat anti-Rabbit Light Chain HRP Conjugate (Cat. No. A120-113P) and 4-20% SDS-PAGE (link to IP-western blot protocol in Additional Info section below).

Western blot of lysates performed using standard western blot reagents and 4-20% SDS-PAGE.

**ADDITIONAL INFO** <https://www.bethyl.com/product/A300-931A-T>

Use the link above to view SDS, a current list of citations, and other product specific information. IP-western blot protocol: [https://www.bethyl.com/content/protocol\\_IP\\_WB](https://www.bethyl.com/content/protocol_IP_WB)

This document certifies that this product has met all of the quality control standards defined by Bethyl Laboratories, Inc.  
Eric McIntush, PhD | Chief Scientific Officer Date: June 21, 2019



**Detection of human Coronin 1 by western blot.** *Samples:* Whole cell lysate (5, 15, and 50 µg) from Jurkat cells. *Antibody:* Affinity purified rabbit anti-Coronin 1 antibody A300-931A-T used at 1:1000. *Detection:* Chemiluminescence with an exposure time of 30 seconds.