



# SZABO SCANDIC

Part of Europa Biosite

## Produktinformation



Forschungsprodukte & Biochemikalien



Zellkultur & Verbrauchsmaterial



Diagnostik & molekulare Diagnostik



Laborgeräte & Service

Weitere Information auf den folgenden Seiten!  
See the following pages for more information!



### Lieferung & Zahlungsart

siehe unsere [Liefer- und Versandbedingungen](#)

### Zuschläge

- Mindermengenzuschlag
- Trockeneiszuschlag
- Gefahrgutzuschlag
- Expressversand

### SZABO-SCANDIC HandelsgmbH

Quellenstraße 110, A-1100 Wien

T. +43(0)1 489 3961-0

F. +43(0)1 489 3961-7

[mail@szabo-scandic.com](mailto:mail@szabo-scandic.com)

[www.szabo-scandic.com](http://www.szabo-scandic.com)

[linkedin.com/company/szaboscandic](https://www.linkedin.com/company/szaboscandic) 

# DTL/CTD2 Antibody

Rabbit Polyclonal

Antigen Affinity Purified Protein ID NP\_057532.1

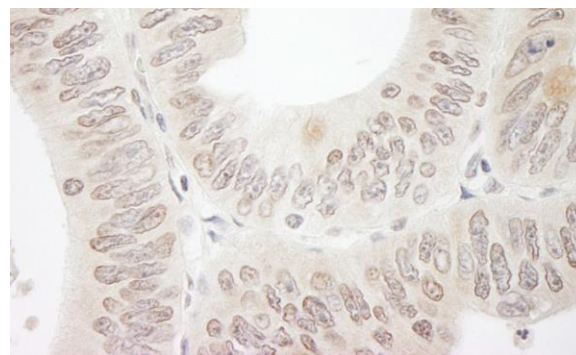
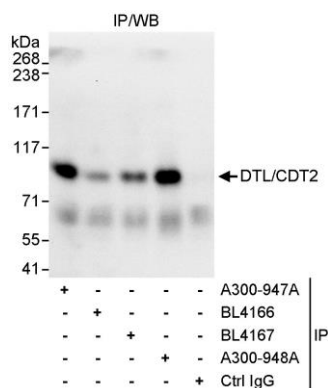
Catalog No. A300-947A-T GeneID 51514

Lot No. A300-947A-T-1



<b>APPLICATIONS</b>	IP, IHC
<b>SPECIES REACTIVITY</b>	Human
<b>AMOUNT</b>	10 µl
<b>CONCENTRATION</b>	1000 µg/ml
<b>STORAGE/SHELF LIFE</b>	2 - 8° C / 1 year from date of receipt
<b>PHYSICAL STATE</b>	Liquid
<b>BUFFER</b>	Tris-citrate/phosphate buffer, pH 7 to 8 containing 0.09% Sodium Azide
<b>ISOTYPE</b>	IgG
<b>ORIGIN</b>	USA
<b>PRODUCTION PROCEDURES</b>	Antibody was affinity purified using an epitope specific to DTL/CDT2 immobilized on solid support.  The epitope recognized by A300-947A-T maps to a region between residue 375 and 425 of human Denticleless Homolog (Chromatin Licensing and DNA Replicating Factor 2) using the numbering given in entry NP_057532.1 (GeneID 51514).  Immunoglobulin concentration was determined by extinction coefficient: absorbance at 280 nm of 1.4 equals 1.0 mg of IgG.
<b>APPLICATIONS</b>	Centrifuge tube to remove product from lid. Optimal working dilutions should be determined experimentally by the investigator. Prepare working dilution immediately before use.  Western Blot Not recommended. Use rabbit anti-DTL/CDT2 antibody A300-948A-T.  Immunoprecipitation 2 - 5 µg/mg lysate  Immunohistochemistry 1:500 - 1:2,000. Epitope retrieval with Tris-EDTA pH 9.0 is recommended for FFPE tissue sections.
<b>APPLICATION NOTES</b>	Western blot of immunoprecipitates performed using Normal Pig Serum (Cat. No. S100-020), Goat anti-Rabbit Light Chain HRP Conjugate (Cat. No. A120-113P) and 4-8% SDS-PAGE (link to IP-western blot protocol in Additional Info section below).
<b>ADDITIONAL INFO</b>	<a href="https://www.bethyl.com/product/A300-947A-T">https://www.bethyl.com/product/A300-947A-T</a> Use the link above to view SDS, a current list of citations, and other product specific information. IP-western blot protocol: <a href="https://www.bethyl.com/content/protocol_IP_WB">https://www.bethyl.com/content/protocol_IP_WB</a>

This document certifies that this product has met all of the quality control standards defined by Bethyl Laboratories, Inc.  
Eric McIntush, PhD | Chief Scientific Officer Date: June 21, 2019



**Detection of human DTL/CTD2 by western blot of immunoprecipitates.** *Samples:* Whole cell lysate (1 mg for IP, 20% of IP loaded) from HeLa cells. *Antibody:* Affinity purified rabbit anti-DTL/CTD2 antibody A300-947A-T used for IP at 3 µg/mg lysate. DTL/CTD2 was also immunoprecipitated by rabbit anti-DTL/CTD2 antibodies BL4166, BL4167 and A300-948A, which recognize downstream epitopes. For blotting immunoprecipitated DTL/CTD2, A300-948A was used at 1 µg/ml. *Detection:* Chemiluminescence with an exposure time 10 seconds.

**Detection of human DTL/CTD2 by immunohistochemistry.** *Samples:* FFPE section of human colon carcinoma. *Antibody:* Affinity purified rabbit anti-DTL/CTD2 (Cat. No. A300-947A-T Lot1) used at a dilution of 1:1,000 (1 µg/ml). *Detection:* DAB.