



SZABO SCANDIC

Part of Europa Biosite

Produktinformation



Forschungsprodukte & Biochemikalien



Zellkultur & Verbrauchsmaterial



Diagnostik & molekulare Diagnostik



Laborgeräte & Service

Weitere Information auf den folgenden Seiten!
See the following pages for more information!



Lieferung & Zahlungsart

siehe unsere [Liefer- und Versandbedingungen](#)

Zuschläge

- Mindermengenzuschlag
- Trockeneiszuschlag
- Gefahrgutzuschlag
- Expressversand

SZABO-SCANDIC HandelsgmbH

Quellenstraße 110, A-1100 Wien

T. +43(0)1 489 3961-0

F. +43(0)1 489 3961-7

mail@szabo-scandic.com

www.szabo-scandic.com

[linkedin.com/company/szaboscandic](https://www.linkedin.com/company/szaboscandic) 

DTL/CTD2 Antibody

Rabbit Polyclonal

Antigen Affinity Purified

Protein ID NP_057532.1

Catalog No. A300-947A

GeneID 51514

Lot No. A300-947A-1



APPLICATIONS IP, IHC

SPECIES REACTIVITY Human

AMOUNT 100 µl

CONCENTRATION 1000 µg/ml

STORAGE/SHELF LIFE 2 – 8° C / 1 year from date of receipt

PHYSICAL STATE Liquid

BUFFER Tris-citrate/phosphate buffer, pH 7 to 8 containing 0.09% Sodium Azide

ISOTYPE IgG

ORIGIN USA

PRODUCTION PROCEDURES Antibody was affinity purified using an epitope specific to DTL/CDT2 immobilized on solid support.

The epitope recognized by A300-947A maps to a region between residue 375 and 425 of human Denticleless Homolog (Chromatin Licensing and DNA Replicating Factor 2) using the numbering given in entry NP_057532.1 (GeneID 51514).

Immunoglobulin concentration was determined by extinction coefficient: absorbance at 280 nm of 1.4 equals 1.0 mg of IgG.

APPLICATIONS Centrifuge tube to remove product from lid. Optimal working dilutions should be determined experimentally by the investigator. Prepare working dilution immediately before use.

Western Blot Not recommended. Use rabbit anti-DTL/CDT2 antibody A300-948A.

Immunoprecipitation 2 – 5 µg/mg lysate

Immunohistochemistry 1:500 – 1:2,000. Epitope retrieval with Tris-EDTA pH 9.0 is recommended for FFPE tissue sections.

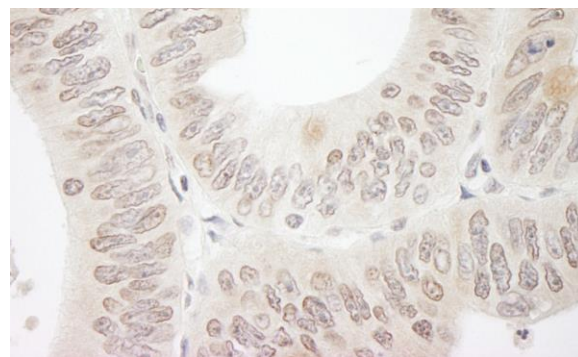
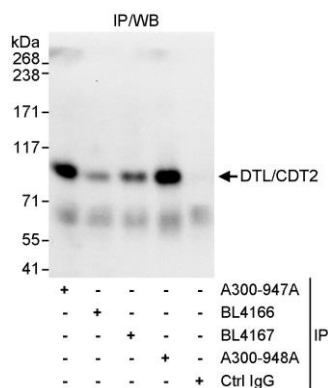
APPLICATION NOTES Western blot of immunoprecipitates performed using Normal Pig Serum (Cat. No. S100-020), Goat anti-Rabbit Light Chain HRP Conjugate (Cat. No. A120-113P) and 4-8% SDS-PAGE (link to IP-western blot protocol in Additional Info section below).

IHC HUMAN CONTROLS Colon Carcinoma, Ovarian Carcinoma

ADDITIONAL INFO <https://www.bethyl.com/product/A300-947A>

Use the link above to view SDS, a current list of citations, and other product specific information. IP-western blot protocol: https://www.bethyl.com/content/protocol_IP_WB

This document certifies that this product has met all of the quality control standards defined by Bethyl Laboratories, Inc.
Eric McIntush, PhD | Chief Scientific Officer Date: June 21, 2019



Detection of human DTL/CTD2 by western blot of immunoprecipitates. *Samples:* Whole cell lysate (1 mg for IP, 20% of IP loaded) from HeLa cells. *Antibodies:* Affinity purified rabbit anti-DTL/CTD2 antibody A300-947A used for IP at 3 $\mu\text{g}/\text{mg}$ lysate. DTL/CTD2 was also immunoprecipitated by rabbit anti-DTL/CTD2 antibodies BL4166, BL4167 and A300-948A, which recognize downstream epitopes. For blotting immunoprecipitated DTL/CTD2, A300-948A was used at 1 $\mu\text{g}/\text{ml}$. *Detection:* Chemiluminescence with an exposure time 10 seconds.

Detection of human DTL/CTD2 by immunohistochemistry. *Sample:* FFPE section of human colon carcinoma. *Antibody:* Affinity purified rabbit anti-DTL/CTD2 (Cat. No. A300-947A Lot1) used at a dilution of 1:1,000 (1 $\mu\text{g}/\text{ml}$). *Detection:* DAB