



SZABO SCANDIC

Part of Europa Biosite

Produktinformation



Forschungsprodukte & Biochemikalien



Zellkultur & Verbrauchsmaterial



Diagnostik & molekulare Diagnostik



Laborgeräte & Service

Weitere Information auf den folgenden Seiten!
See the following pages for more information!



Lieferung & Zahlungsart

siehe unsere [Liefer- und Versandbedingungen](#)

Zuschläge

- Mindermengenzuschlag
- Trockeneiszuschlag
- Gefahrgutzuschlag
- Expressversand

SZABO-SCANDIC HandelsgmbH

Quellenstraße 110, A-1100 Wien

T. +43(0)1 489 3961-0

F. +43(0)1 489 3961-7

mail@szabo-scandic.com

www.szabo-scandic.com

[linkedin.com/company/szaboscandic](https://www.linkedin.com/company/szaboscandic) 

DTL/CDT2 Antibody

Rabbit Polyclonal

Antigen Affinity Purified

Protein ID NP_057532.1

Catalog No. A300-948A

GeneID 51514

Lot No. A300-948A-3



APPLICATIONS WB, IP, IHC

SPECIES REACTIVITY Human

AMOUNT 100 µl

CONCENTRATION 200 µg/ml

STORAGE/SHELF LIFE 2 – 8° C / 1 year from date of receipt

PHYSICAL STATE Liquid

BUFFER Tris-buffered Saline containing 0.1% BSA and 0.09% Sodium Azide

ISOTYPE IgG

ORIGIN USA

PRODUCTION PROCEDURES Antibody was affinity purified using an epitope specific to DTL/CDT2 immobilized on solid support.

The epitope recognized by A300-948A maps to a region between residue 680 and the C-terminus (residue 730) of human Denticleless Homolog (Chromatin Licensing and DNA Replicating Factor 2) using the numbering given in entry NP_057532.1 (GeneID 51514).

Immunoglobulin concentration was determined by extinction coefficient: absorbance at 280 nm of 1.4 equals 1.0 mg of IgG.

APPLICATIONS Centrifuge tube to remove product from lid. Optimal working dilutions should be determined experimentally by the investigator. Prepare working dilution immediately before use.

Western Blot 1:2,000 – 1:10,000

Immunoprecipitation 2 – 10 µg/mg lysate

Immunohistochemistry 1:200 to 1:1000. Epitope retrieval with citrate buffer pH6.0 is recommended for FFPE tissue sections.

APPLICATION NOTES Western blot of immunoprecipitates performed using Normal Pig Serum (Cat. No. S100-020), Goat anti-Rabbit Light Chain HRP Conjugate (Cat. No. A120-113P) and 4-8% SDS-PAGE (link to IP-western blot protocol in Additional Info section below).

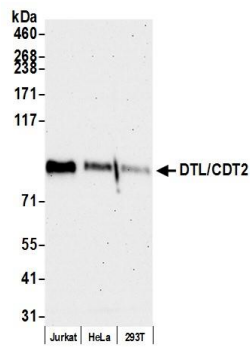
IHC HUMAN CONTROLS Western blot of lysates performed using standard western blot reagents and 4-8% SDS-PAGE. Colon Carcinoma, Ovarian Carcinoma, Prostate Carcinoma

IHC MOUSE CONTROLS Plasmacytoma, Renal Cell Carcinoma

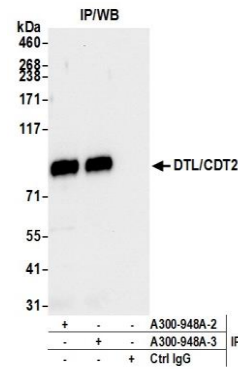
ADDITIONAL INFO <https://www.bethyl.com/product/A300-948A>

Use the link above to view SDS, a current list of citations, and other product specific information. IP-western blot protocol https://www.bethyl.com/content/protocol_IP_WB

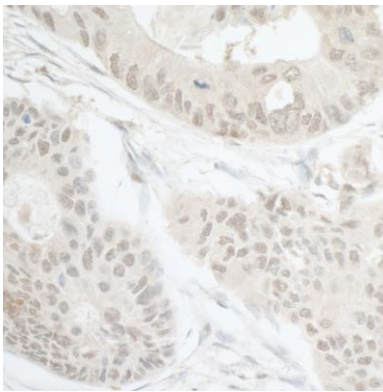
This document certifies that this product has met all of the quality control standards defined by Bethyl Laboratories, Inc.
Eric McIntush, PhD | Chief Scientific Officer Date: July 18, 2019



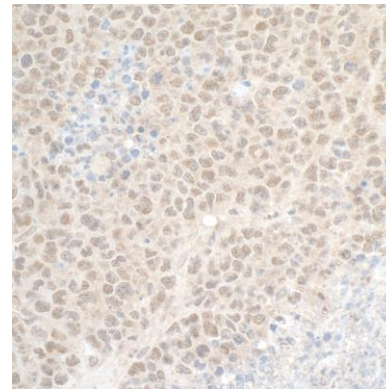
Detection of human DTL/CDT2 by western blot. *Samples:* Whole cell lysate (15 μ g) from Jurkat, HeLa, and HEK293T cells prepared using NETN lysis buffer. *Antibody:* Affinity purified rabbit anti-DTL/CDT2 antibody A300-948A (lot A300-948A-3) used for WB at 0.04 μ g/ml. *Detection:* Chemiluminescence with an exposure time of 75 seconds.



Detection of human DTL/CDT2 by western blot of immunoprecipitates. *Samples:* Whole cell lysate (1.0 mg per IP reaction; 20% of IP loaded) from Jurkat cells prepared using NETN lysis buffer. *Antibodies:* Affinity purified rabbit anti-DTL/CDT2 antibody A300-948A (lot A300-948A-3) used for IP at 6 μ g per reaction. DTL/CDT2 was also immunoprecipitated by a previous lot of this antibody (lot A300-948A-2). For blotting immunoprecipitated DTL/CDT2, A300-948A was used at 0.1 μ g/ml. *Detection:* Chemiluminescence with an exposure time of 3 seconds.



Detection of human DTL/CDT2 by immunohistochemistry. *Sample:* FFPE section of human prostate carcinoma. *Antibody:* Affinity purified rabbit anti-DTL/CDT2 (Cat. No. A300-948A lot 3) used at a dilution of 1:1000 (0.2 μ g/ml). *Detection:* DAB



Detection of mouse DTL/CDT2 by immunohistochemistry. *Sample:* FFPE section of mouse plasmacytoma. *Antibody:* Affinity purified rabbit anti-DTL/CDT2 (Cat. No. A300-948A lot 3) used at a dilution of 1:200 (1 μ g/ml). *Detection:* DAB