



# SZABO SCANDIC

Part of Europa Biosite

## Produktinformation



Forschungsprodukte & Biochemikalien



Zellkultur & Verbrauchsmaterial



Diagnostik & molekulare Diagnostik



Laborgeräte & Service

Weitere Information auf den folgenden Seiten!  
See the following pages for more information!



### Lieferung & Zahlungsart

siehe unsere [Liefer- und Versandbedingungen](#)

### Zuschläge

- Mindermengenzuschlag
- Trockeneiszuschlag
- Gefahrgutzuschlag
- Expressversand

### SZABO-SCANDIC HandelsgmbH

Quellenstraße 110, A-1100 Wien

T. +43(0)1 489 3961-0

F. +43(0)1 489 3961-7

[mail@szabo-scandic.com](mailto:mail@szabo-scandic.com)

[www.szabo-scandic.com](http://www.szabo-scandic.com)

[linkedin.com/company/szaboscandic](https://www.linkedin.com/company/szaboscandic) 

# Topo II Beta Antibody

Rabbit Polyclonal

Antigen Affinity Purified Protein ID NP\_001059.2

Catalog No. A300-949A GeneID 7155

Lot No. A300-949A-3

**APPLICATIONS** WB, IP, IHC

**SPECIES REACTIVITY** Human

**AMOUNT** 100 µl

**CONCENTRATION** 200 µg/ml

**STORAGE/SHELF LIFE** 2 – 8°C / 1 year from date of receipt

**PHYSICAL STATE** Liquid

**BUFFER** Tris-buffered Saline containing 0.1% BSA and 0.09% Sodium Azide

**ISOTYPE** IgG

**ORIGIN** USA

**PRODUCTION PROCEDURES** Antibody was affinity purified using an epitope specific to Topo II Beta immobilized on solid support.

The epitope recognized by A300-949A maps to a region between residue 1475 and 1525 of human DNA Topoisomerase II Beta using the numbering given in entry NP\_001059.2 (GeneID 7155).

Immunoglobulin concentration was determined by extinction coefficient: absorbance at 280 nm of 1.4 equals 1.0 mg of IgG.

**APPLICATIONS** Centrifuge tube to remove product from lid. Optimal working dilutions should be determined experimentally by the investigator. Prepare working dilution immediately before use.

Western Blot 1:2,000 – 1:10,000

Immunoprecipitation 2 – 10 µg/mg lysate

Immunohistochemistry 1:100 to 1:500. Epitope retrieval with citrate buffer pH6.0 is recommended for FFPE tissue sections.

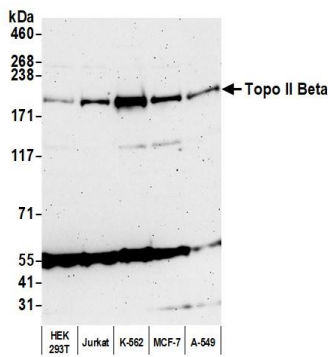
**IHC HUMAN CONTROLS** Non-Small Cell Lung Cancer, Ovarian Carcinoma

**ADDITIONAL INFO** <https://www.bethyl.com/product/A300-949A>

Use the link above to view SDS, a current list of citations, and other product specific information.

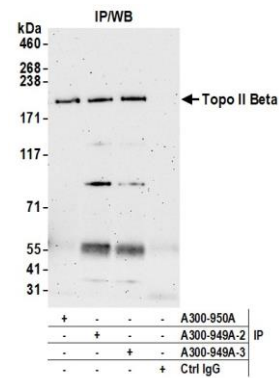
IP-western blot protocol: [https://www.bethyl.com/content/protocol\\_IP\\_WB](https://www.bethyl.com/content/protocol_IP_WB)

This document certifies that this product has met all of the quality control standards defined by Bethyl Laboratories, Inc.  
Michael Spencer, PhD Date: May 9, 2022



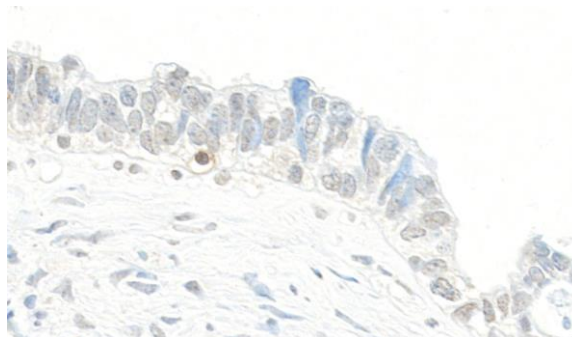
**Detection of human Topo II Beta by western blot.**

*Samples:* Whole cell lysate (50 µg) from HEK293T, Jurkat, K-562, MCF-7, and A-549 cells prepared using NETN lysis buffer. *Antibody:* Affinity purified rabbit anti-Topo II Beta antibody (A300-949A lot 3) used for WB at 0.04 µg/ml. *Detection:* Chemiluminescence with an exposure time of 3 minutes.



**Detection of human Topo II Beta by western blot of immunoprecipitates.**

*Samples:* Whole cell lysate (1.0 mg per IP reaction; 10% of IP loaded) from HEK293T cells prepared using NETN lysis buffer. *Antibodies:* Affinity purified rabbit anti-Topo II Beta antibody (A300-949A lot 3) used for IP at 6 µg per reaction. Topo II Beta was also immunoprecipitated by a previous lot of this antibody (A300-949A lot 2) and a second antibody against a different epitope of Topo II Beta (A300-950A). For blotting immunoprecipitated Topo II Beta, A300-949A was used at 0.1 µg/ml. *Detection:* Chemiluminescence with an exposure time of 3 minutes.



**Detection of human Topo II Beta by immunohistochemistry.**

*Sample:* FFPE section of human ovarian carcinoma. *Antibody:* Affinity purified rabbit anti-Topo II Beta (A300-949A lot 3) used at a dilution of 1:200 (1 µg/ml). *Detection:* DAB