



SZABO SCANDIC

Part of Europa Biosite

Produktinformation



Forschungsprodukte & Biochemikalien



Zellkultur & Verbrauchsmaterial



Diagnostik & molekulare Diagnostik



Laborgeräte & Service

Weitere Information auf den folgenden Seiten!
See the following pages for more information!



Lieferung & Zahlungsart

siehe unsere [Liefer- und Versandbedingungen](#)

Zuschläge

- Mindermengenzuschlag
- Trockeneiszuschlag
- Gefahrgutzuschlag
- Expressversand

SZABO-SCANDIC HandelsgmbH

Quellenstraße 110, A-1100 Wien

T. +43(0)1 489 3961-0

F. +43(0)1 489 3961-7

mail@szabo-scandic.com

www.szabo-scandic.com

[linkedin.com/company/szaboscandic](https://www.linkedin.com/company/szaboscandic) 

FALZ/BPTF Antibody

Rabbit Polyclonal

Antigen Affinity Purified

Protein ID NP_872579.2

Catalog No. A300-973A

GeneID 2186

Lot No. A300-973A-3



APPLICATIONS WB, IP, IHC

SPECIES REACTIVITY Human

AMOUNT 100 µl

CONCENTRATION 200 µg/ml

STORAGE/SHELF LIFE 2 – 8° C / 1 year from date of receipt

PHYSICAL STATE Liquid

BUFFER Tris-buffered Saline containing 0.1% BSA and 0.09% Sodium Azide

ISOTYPE IgG

ORIGIN USA

PRODUCTION PROCEDURES Antibody was affinity purified using an epitope specific to FALZ/BPTF immobilized on solid support.

The epitope recognized by A300-973A maps to a region between residue 1350 and 1400 of human Fetal Alzheimer Antigen (Bromodomain and PHD Domain Transcription Factor) using the numbering given in entry NP_872579.2 (GeneID 2186).

Immunoglobulin concentration was determined by extinction coefficient: absorbance at 280 nm of 1.4 equals 1.0 mg of IgG.

APPLICATIONS Centrifuge tube to remove product from lid. Optimal working dilutions should be determined experimentally by the investigator. Prepare working dilution immediately before use.

Western Blot 1:2,000 – 1:1,0000

Immunoprecipitation 2 – 10 µg/mg lysate

Immunohistochemistry 1:200 to 1:1000. Epitope retrieval with Tris-EDTA pH9.0 is recommended for FFPE tissue sections.

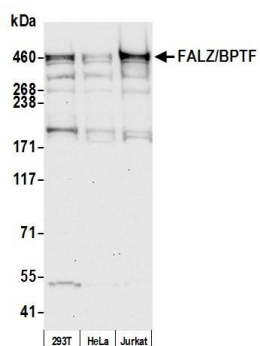
APPLICATION NOTES Western blot of immunoprecipitates performed using Normal Pig Serum (Cat. No. S100-020), Goat anti-Rabbit Light Chain HRP Conjugate (Cat. No. A120-113P) and 3-8% SDS-PAGE (link to IP-western blot protocol in Additional Info section below).

IHC HUMAN CONTROLS Western blot of lysates performed using standard western blot reagents and 3-8% SDS-PAGE. Breast Carcinoma, Colon Carcinoma, Ovarian Carcinoma

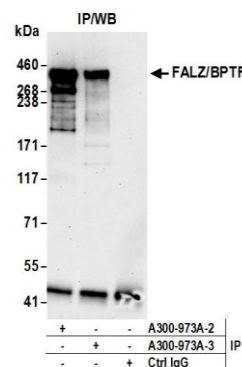
ADDITIONAL INFO <https://www.bethyl.com/product/A300-973A>

Use the link above to view SDS, a current list of citations, and other product specific information. IP-western blot protocol https://www.bethyl.com/content/protocol_IP_WB

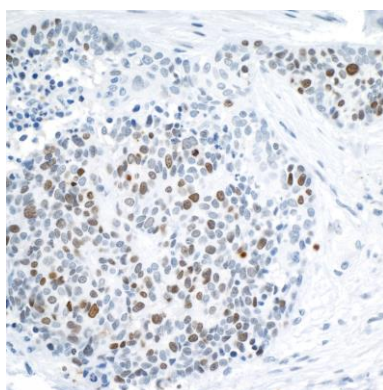
This document certifies that this product has met all of the quality control standards defined by Bethyl Laboratories, Inc.
Eric McIntush, PhD | Chief Scientific Officer Date: January 6, 2020



Detection of human FALZ/BPTF by western blot. *Samples:* Whole cell lysate (50 µg) from HEK293T, HeLa, and Jurkat cells prepared using NETN lysis buffer. *Antibody:* Affinity purified rabbit anti-FALZ/BPTF antibody A300-973A (lot A300-973A-3) used for WB at 0.1 µg/ml. *Detection:* Chemiluminescence with an exposure time of 30 seconds.



Detection of human FALZ/BPTF by western blot of immunoprecipitates. *Samples:* Whole cell lysate (1.0 mg per IP reaction; 20% of IP loaded) from HEK293T cells prepared using NETN lysis buffer. *Antibodies:* Affinity purified rabbit anti-FALZ/BPTF antibody A300-973A (lot A300-973A-3) used for IP at 6 µg per reaction. FALZ/BPTF was also immunoprecipitated by a previous lot of this antibody (lot A300-973A-2). For blotting immunoprecipitated FALZ/BPTF, A300-973A was used at 0.1 µg/ml. *Detection:* Chemiluminescence with an exposure time of 30 seconds.



Detection of human FALZ/BPTF by immunohistochemistry. *Sample:* FFPE section of human lung carcinoma. *Antibody:* Affinity purified rabbit anti-FALZ/BPTF (Cat. No. A300-973A lot 3) used at a dilution of 1:1,000 (0.2µg/ml). *Detection:* DAB