



SZABO SCANDIC

Part of Europa Biosite

Produktinformation



Forschungsprodukte & Biochemikalien



Zellkultur & Verbrauchsmaterial



Diagnostik & molekulare Diagnostik



Laborgeräte & Service

Weitere Information auf den folgenden Seiten!
See the following pages for more information!



Lieferung & Zahlungsart

siehe unsere [Liefer- und Versandbedingungen](#)

Zuschläge

- Mindermengenzuschlag
- Trockeneiszuschlag
- Gefahrgutzuschlag
- Expressversand

SZABO-SCANDIC HandelsgmbH

Quellenstraße 110, A-1100 Wien

T. +43(0)1 489 3961-0

F. +43(0)1 489 3961-7

mail@szabo-scandic.com

www.szabo-scandic.com

[linkedin.com/company/szaboscandic](https://www.linkedin.com/company/szaboscandic) 

HRS Antibody

Rabbit Polyclonal

Antigen Affinity Purified

Protein ID NP_004703.1

Catalog No. A300-989A

GeneID 9146

Lot No. A300-989A-3



APPLICATIONS	WB, IP
SPECIES REACTIVITY	Human, Mouse
PRESUMED REACTIVITY	Based on 100% sequence identity, this antibody is predicted to react with Bovine
AMOUNT	100 µl
CONCENTRATION	200 µg/ml
STORAGE/SHELF LIFE	2 - 8° C / 1 year from date of receipt
PHYSICAL STATE	Liquid
BUFFER	Tris-buffered Saline containing 0.1% BSA and 0.09% Sodium Azide
ISOTYPE	IgG
ORIGIN	USA
PRODUCTION PROCEDURES	Antibody was affinity purified using an epitope specific to HRS immobilized on solid support.

The epitope recognized by A300-989A maps to a region between residue 727 and the C-terminus (residue 777) of human growth factor-regulated tyrosine kinase substrate using the numbering given in entry NP_004703.1 (GeneID 9146).

Immunoglobulin concentration was determined by extinction coefficient: absorbance at 280 nm of 1.4 equals 1.0 mg of IgG.

APPLICATIONS Centrifuge tube to remove product from lid. Optimal working dilutions should be determined experimentally by the investigator. Prepare working dilution immediately before use.

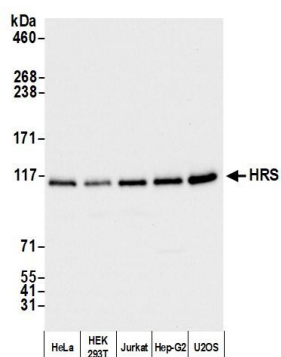
Western Blot 1:2,000 - 1:10,000

Immunoprecipitation 2 - 10 µg/mg lysate

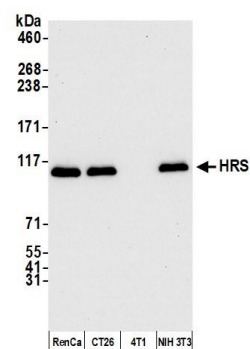
ADDITIONAL INFO <https://www.bethyl.com/product/A300-989A>

Use the link above to view SDS, a current list of citations, and other product specific information. IP-western blot protocol: https://www.bethyl.com/content/protocol_IP_WB

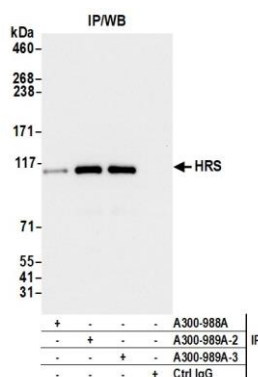
This document certifies that this product has met all of the quality control standards defined by Bethyl Laboratories, Inc.
Brian McWilliams, PhD Date: December 28, 2020



Detection of human HRS by western blot. *Samples:* Whole cell lysate (10 µg) from HeLa, HEK293T, Jurkat, Hep-G2, and U2OS cells prepared using NETN lysis buffer. *Antibody:* Affinity purified rabbit anti-HRS antibody (A300-989A lot 3) used for WB at 0.04 µg/ml. *Detection:* Chemiluminescence with an exposure time of 3 seconds.



Detection of mouse HRS by western blot. *Samples:* Whole cell lysate (10 µg) from RenCa, CT26, 4T1, and NIH 3T3 cells prepared using NETN lysis buffer. *Antibody:* Affinity purified rabbit anti-HRS antibody (A300-989A lot 3) used for WB at 0.04 µg/ml. *Detection:* Chemiluminescence with an exposure time of 10 seconds.



Detection of human HRS by western blot of immunoprecipitates. *Samples:* Whole cell lysate (1.0 mg per IP reaction; 20% of IP loaded) from BeWo, AlphaTC1 Clone 9, A20, and 3T3-L1 cells prepared using NETN lysis buffer. *Antibodies:* Affinity purified rabbit anti-HRS antibody (A300-989A lot 3) used for IP at 6 µg per reaction. HRS was also immunoprecipitated by a previous lot of this antibody (A300-989A lot 2) and rabbit anti-HRS antibody A300-988A. For blotting immunoprecipitated HRS, A300-989A was used at 0.04 µg/ml. *Detection:* Chemiluminescence with an exposure time of 3 seconds.