



SZABO SCANDIC

Part of Europa Biosite

Produktinformation



Forschungsprodukte & Biochemikalien



Zellkultur & Verbrauchsmaterial



Diagnostik & molekulare Diagnostik



Laborgeräte & Service

Weitere Information auf den folgenden Seiten!
See the following pages for more information!



Lieferung & Zahlungsart

siehe unsere [Liefer- und Versandbedingungen](#)

Zuschläge

- Mindermengenzuschlag
- Trockeneiszuschlag
- Gefahrgutzuschlag
- Expressversand

SZABO-SCANDIC HandelsgmbH

Quellenstraße 110, A-1100 Wien

T. +43(0)1 489 3961-0

F. +43(0)1 489 3961-7

mail@szabo-scandic.com

www.szabo-scandic.com

[linkedin.com/company/szaboscandic](https://www.linkedin.com/company/szaboscandic) 

BIG1 /ARFGEF1 Antibody

Rabbit Polyclonal

Antigen Affinity Purified Protein ID NP_006412.2

Catalog No. A300-998A-T GenelD 10565

Lot No. A300-998A-T-2

APPLICATIONS	WB, IP, IHC
SPECIES REACTIVITY	Human, Mouse
PRESUMED REACTIVITY	Based on 100% sequence identity, this antibody is predicted to react with Rat and Bovine
AMOUNT	10 µl
CONCENTRATION	1000 µg/ml
STORAGE/SHELF LIFE	2 – 8°C / 1 year from date of receipt
PHYSICAL STATE	Liquid
BUFFER	Tris-citrate/phosphate buffer, pH 7 to 8 containing 0.09% Sodium Azide
ISOTYPE	IgG
ORIGIN	USA
PRODUCTION PROCEDURES	Antibody was affinity purified using an epitope specific to BIG1 /ARFGEF1 immobilized on solid support.

The epitope recognized by A300-998A-T maps to a region between residue 1800 and the C-terminus (residue 1849) of human brefeldin A-inhibited guanine nucleotide-exchange protein 1 (ADP-ribosylation factor guanine nucleotide-exchange factor 1) using the numbering given in entry NP_006412.2 (GenelD 10565).

APPLICATIONS Centrifuge tube to remove product from lid. Optimal working dilutions should be determined experimentally by the investigator. Prepare working dilution immediately before use.

Western Blot 1:1,000 – 1:10,000

Immunoprecipitation 2 – 10 µg/mg lysate

Immunohistochemistry 1:1,000 to 1:5,000. Epitope retrieval with Tris-EDTA pH9.0 is recommended for FFPE tissue sections.

ADDITIONAL INFO <https://www.bethyl.com/product/A300-998A-T>

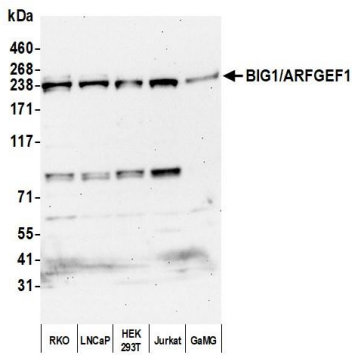
Use the link above to view SDS, a current list of citations, and other product specific information.

IP-western blot protocol: https://www.bethyl.com/content/protocol_IP_WB

This document certifies that this product has met all of the quality control standards defined by Bethyl Laboratories, Inc.

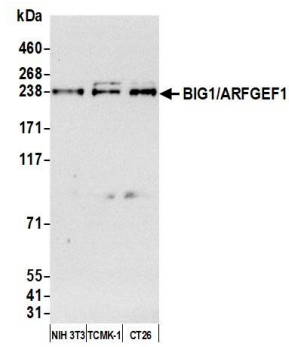
Michael Spencer, PhD

Date: June 6, 2022



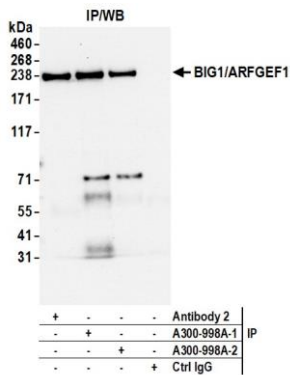
Detection of human BIG1/ARFGEF1 by western blot.

Samples: Whole cell lysate (25 µg) from RKO, LNCaP, HEK293T, Jurkat, and GaMG cells prepared using NETN lysis buffer. *Antibody:* Affinity purified rabbit anti-BIG1/ARFGEF1 antibody (A300-998A lot 2) used for WB at 0.1 µg/ml. *Detection:* Chemiluminescence with an exposure time of 30 seconds.

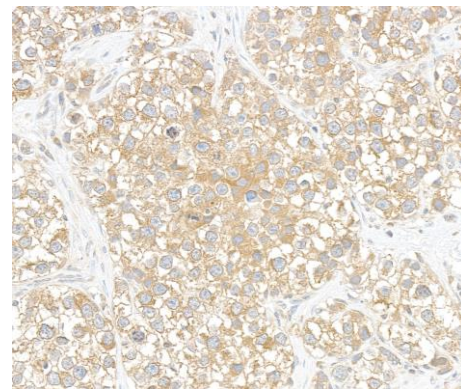


Detection of human BIG1/ARFGEF1 by western blot.

Samples: Whole cell lysate (25 µg) from NIH 3T3, TCMK-1, and CT26 cells prepared using NETN lysis buffer. *Antibody:* Affinity purified rabbit anti-BIG1/ARFGEF1 antibody (A300-998A lot 2) used for WB at 0.1 µg/ml. *Detection:* Chemiluminescence with an exposure time of 3 minutes.



Detection of human BIG1/ARFGEF1 by western blot of immunoprecipitates. *Samples:* Whole cell lysate (1.0 mg per IP reaction; 20% of IP loaded) from RKO cells prepared using NETN lysis buffer. *Antibodies:* Affinity purified rabbit anti-BIG1/ARFGEF1 antibody (A300-998A lot 2) used for IP at 6 µg per reaction. BIG1/ARFGEF1 was also immunoprecipitated by a previous lot of this antibody (A300-998A lot 1) and a second antibody against a different epitope of BIG1/ARFGEF1 (Antibody 2). For blotting immunoprecipitated BIG1/ARFGEF1, A300-998A was used at 0.1 µg/ml. *Detection:* Chemiluminescence with an exposure time of 10 seconds.



Detection of human BIG1/ARFGEF1 by immunohistochemistry. *Sample:* FFPE section of human testicular seminoma. *Antibody:* Affinity purified rabbit anti-BIG1/ARFGEF1 (Cat. No. A300-998A Lot2) used at a dilution of 1:1,000 (1µg/ml). *Detection:* DAB