



SZABO SCANDIC

Part of Europa Biosite

Produktinformation



Forschungsprodukte & Biochemikalien



Zellkultur & Verbrauchsmaterial



Diagnostik & molekulare Diagnostik



Laborgeräte & Service

Weitere Information auf den folgenden Seiten!
See the following pages for more information!



Lieferung & Zahlungsart

siehe unsere [Liefer- und Versandbedingungen](#)

Zuschläge

- Mindermengenzuschlag
- Trockeneiszuschlag
- Gefahrgutzuschlag
- Expressversand

SZABO-SCANDIC HandelsgmbH

Quellenstraße 110, A-1100 Wien

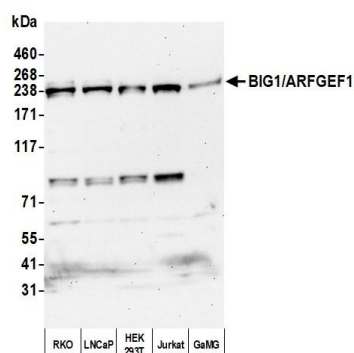
T. +43(0)1 489 3961-0

F. +43(0)1 489 3961-7

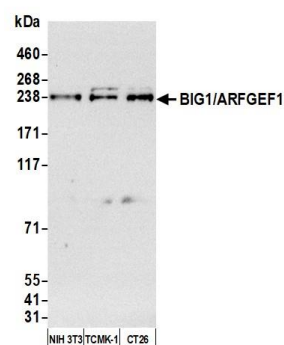
mail@szabo-scandic.com

www.szabo-scandic.com

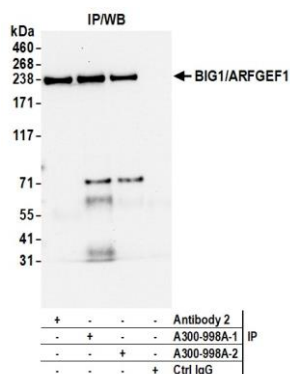
[linkedin.com/company/szaboscandic](https://www.linkedin.com/company/szaboscandic) 

**Detection of human BIG1/ARFGEF1 by western blot.**

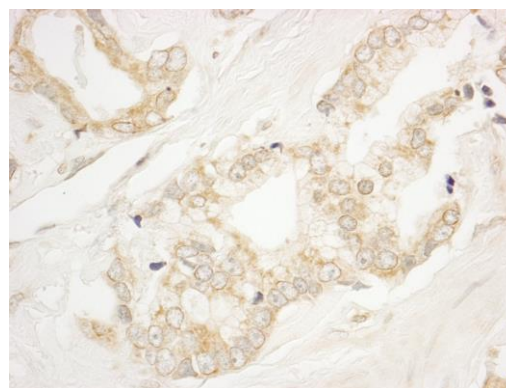
Samples: Whole cell lysate (25 µg) from RKO, LNCaP, HEK293T, Jurkat, and GaMG cells prepared using NETN lysis buffer. *Antibody:* Affinity purified rabbit anti-BIG1/ARFGEF1 antibody (A300-998A lot 2) used for WB at 0.1 µg/ml. *Detection:* Chemiluminescence with an exposure time of 30 seconds.

**Detection of human BIG1/ARFGEF1 by western blot.**

Samples: Whole cell lysate (25 µg) from NIH 3T3, TCMK-1, and CT26 cells prepared using NETN lysis buffer. *Antibody:* Affinity purified rabbit anti-BIG1/ARFGEF1 antibody (A300-998A lot 2) used for WB at 0.1 µg/ml. *Detection:* Chemiluminescence with an exposure time of 3 minutes.



Detection of human BIG1/ARFGEF1 by western blot of immunoprecipitates. *Samples:* Whole cell lysate (1.0 mg per IP reaction; 20% of IP loaded) from RKO cells prepared using NETN lysis buffer. *Antibodies:* Affinity purified rabbit anti-BIG1/ARFGEF1 antibody (A300-998A lot 2) used for IP at 6 µg per reaction. BIG1/ARFGEF1 was also immunoprecipitated by a previous lot of this antibody (A300-998A lot 1) and a second antibody against a different epitope of BIG1/ARFGEF1 (Antibody 2). For blotting immunoprecipitated BIG1/ARFGEF1, A300-998A was used at 0.1 µg/ml. *Detection:* Chemiluminescence with an exposure time of 10 seconds.



Detection of human BIG1/ARFGEF1 by immunohistochemistry. *Sample:* FFPE section of human prostate carcinoma. *Antibody:* Affinity purified rabbit anti-BIG1/ARFGEF1 (Cat. No. A300-998A Lot1) used at a dilution of 1:1,000 (1 µg/ml). *Detection:* DAB