



# SZABO SCANDIC

Part of Europa Biosite

## Produktinformation



Forschungsprodukte & Biochemikalien



Zellkultur & Verbrauchsmaterial



Diagnostik & molekulare Diagnostik



Laborgeräte & Service

Weitere Information auf den folgenden Seiten!  
See the following pages for more information!



### Lieferung & Zahlungsart

siehe unsere [Liefer- und Versandbedingungen](#)

### Zuschläge

- Mindermengenzuschlag
- Trockeneiszuschlag
- Gefahrgutzuschlag
- Expressversand

### SZABO-SCANDIC HandelsgmbH

Quellenstraße 110, A-1100 Wien

T. +43(0)1 489 3961-0

F. +43(0)1 489 3961-7

[mail@szabo-scandic.com](mailto:mail@szabo-scandic.com)

[www.szabo-scandic.com](http://www.szabo-scandic.com)

[linkedin.com/company/szaboscandic](https://www.linkedin.com/company/szaboscandic) 

# SMARCA2/BRM Antibody

Rabbit Polyclonal

Antigen Affinity Purified

Protein ID CAA51407.1

Catalog No. A301-014A

GeneID 6595

Lot No. A301-014A-1



|                              |   |
|------------------------------|---|
| <b>APPLICATIONS</b>          | WB, IP  |
| <b>SPECIES REACTIVITY</b>    | Human   |
| <b>AMOUNT</b>                | 100 µl  |
| <b>CONCENTRATION</b>         | 200 µg/ml   |
| <b>STORAGE/SHELF LIFE</b>    | 2 – 8° C / 1 year from date of receipt  |
| <b>PHYSICAL STATE</b>        | Liquid  |
| <b>BUFFER</b>                | Tris-buffered Saline containing 0.1% BSA and 0.09% Sodium Azide                                       |
| <b>ISOTYPE</b>               | IgG   |
| <b>ORIGIN</b>                | USA   |
| <b>PRODUCTION PROCEDURES</b> | Antibody was affinity purified using an epitope specific to SMARCA2/BRM immobilized on solid support. |

The epitope recognized by A301-014A maps to a region between residue 1 and 50 of human SWI/SNF related, matrix associated, actin dependent regulator of chromatin, subfamily a, member 2 using the numbering given in entry CAA51407.1 (GeneID 6595).

Immunoglobulin concentration was determined by extinction coefficient: absorbance at 280 nm of 1.4 equals 1.0 mg of IgG.

**APPLICATIONS** Centrifuge tube to remove product from lid. Optimal working dilutions should be determined experimentally by the investigator. Prepare working dilution immediately before use.

Western Blot 1:2,000 – 1:10,000

Immunoprecipitation 2 – 5 µg/mg lysate

**APPLICATION NOTES** Western blot of immunoprecipitates performed using Normal Pig Serum (Cat. No. S100-020), Goat anti-Rabbit Light Chain HRP Conjugate (Cat. No. A120-113P) and 4-8% SDS-PAGE (link to IP-western blot protocol in Additional Info section below).

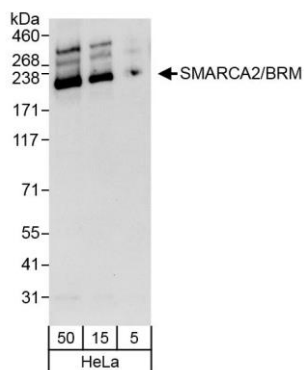
Western blot of lysates performed using standard western blot reagents and 4-8% SDS-PAGE.

**ADDITIONAL INFO** <https://www.bethyl.com/product/A301-014A>

Use the link above to view SDS, a current list of citations, and other product specific information.

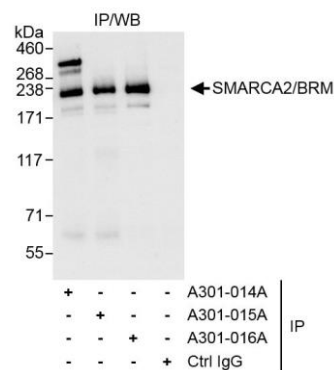
IP-western blot protocol [https://www.bethyl.com/content/protocol\\_IP\\_WB](https://www.bethyl.com/content/protocol_IP_WB)

This document certifies that this product has met all of the quality control standards defined by Bethyl Laboratories, Inc.  
Eric McIntush, PhD | Chief Scientific Officer Date: October 17, 2019



**Detection of human SMARCA2/BRM by western blot.**

*Samples:* Whole cell lysate (5, 15 and 50 µg) from HeLa cells. *Antibodies:* Affinity purified rabbit anti-SMARCA2/BRM antibody A301-014A (lot A301-014A-1) used for WB at 0.04 µg/ml. *Detection:* Chemiluminescence with exposure time of 10 seconds.



**Detection of human SMARCA2/BRM by western blot of immunoprecipitates.**

*Samples:* Whole cell lysate (1 mg for IP, 20% of IP loaded) from HeLa cells. *Antibodies:* Affinity purified rabbit anti-SMARCA2/BRM antibody A301-014A (lot A301-014A-1) used for IP at 3 µg/mg lysate. SMARCA2/BRM was also immunoprecipitated by rabbit anti-SMARCA2/BRM antibodies A301-015A and A301-016A, which recognize downstream epitopes. For blotting immunoprecipitated SMARCA2/BRM, A301-014A was used at 1.0 µg/ml. *Detection:* Chemiluminescence with exposure time of 3 seconds.