



SZABO SCANDIC

Part of Europa Biosite

Produktinformation



Forschungsprodukte & Biochemikalien



Zellkultur & Verbrauchsmaterial



Diagnostik & molekulare Diagnostik



Laborgeräte & Service

Weitere Information auf den folgenden Seiten!
See the following pages for more information!



Lieferung & Zahlungsart

siehe unsere [Liefer- und Versandbedingungen](#)

Zuschläge

- Mindermengenzuschlag
- Trockeneiszuschlag
- Gefahrgutzuschlag
- Expressversand

SZABO-SCANDIC HandelsgmbH

Quellenstraße 110, A-1100 Wien

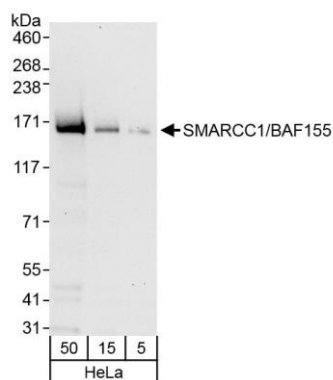
T. +43(0)1 489 3961-0

F. +43(0)1 489 3961-7

mail@szabo-scandic.com

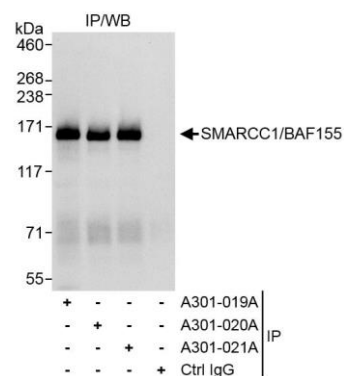
www.szabo-scandic.com

[linkedin.com/company/szaboscandic](https://www.linkedin.com/company/szaboscandic) 



Detection of human SMARCC1/BAF155 by western blot.

Samples: Whole cell lysate (5, 15 and 50 µg) from HeLa cells. *Antibodies:* Affinity purified rabbit anti-SMARCC1/BAF155 antibody A301-019A (lot A301-019A-1) used for WB at 0.04 µg/ml. *Detection:* Chemiluminescence with exposure time of 30 seconds.



Detection of human SMARCC1/BAF155 by western blot of immunoprecipitates.

Samples: Whole cell lysate (1 mg for IP, 20% of IP loaded) from HeLa cells. *Antibodies:* Affinity purified rabbit anti-SMARCC1/BAF155 antibody A301-019A (lot A301-019A-1) used for IP at 3 µg/mg lysate. SMARCC1/BAF155 was also immunoprecipitated by rabbit anti-SMARCC1/BAF155 antibodies A301-020A and A301-021A, which recognize downstream epitopes. For blotting immunoprecipitated SMARCC1/BAF155, A301-019A was used at 1.0 µg/ml. *Detection:* Chemiluminescence with exposure time of 3 seconds.