



# SZABO SCANDIC

Part of Europa Biosite

## Produktinformation



Forschungsprodukte & Biochemikalien



Zellkultur & Verbrauchsmaterial



Diagnostik & molekulare Diagnostik



Laborgeräte & Service

Weitere Information auf den folgenden Seiten!  
See the following pages for more information!



### Lieferung & Zahlungsart

siehe unsere [Liefer- und Versandbedingungen](#)

### Zuschläge

- Mindermengenzuschlag
- Trockeneiszuschlag
- Gefahrgutzuschlag
- Expressversand

### SZABO-SCANDIC HandelsgmbH

Quellenstraße 110, A-1100 Wien

T. +43(0)1 489 3961-0

F. +43(0)1 489 3961-7

[mail@szabo-scandic.com](mailto:mail@szabo-scandic.com)

[www.szabo-scandic.com](http://www.szabo-scandic.com)

[linkedin.com/company/szaboscandic](https://www.linkedin.com/company/szaboscandic) 

# SMARCC1 /BAF155 Antibody

Rabbit Polyclonal

Antigen Affinity Purified      Protein ID    NP\_003065.2  
Catalog No.    A301-020A-T      GeneID      6599  
Lot No.      A301-020A-T-2



**APPLICATIONS**      WB, IP  
**SPECIES REACTIVITY**      Human  
**AMOUNT**      20 µl (2 blots)  
**CONCENTRATION**      40 µg/ml  
**STORAGE/SHELF LIFE**      2 - 8° C / 1 year from date of receipt  
**PHYSICAL STATE**      Liquid  
**BUFFER**      Tris-buffered Saline containing 0.1% BSA and 0.09% Sodium Azide  
**ISOTYPE**      IgG  
**ORIGIN**      USA  
**PRODUCTION PROCEDURES**      Antibody was affinity purified using an epitope specific to SMARCC1 /BAF155 immobilized on solid support.

The epitope recognized by A301-020A-T maps to a region between residue 750 and 800 of human SWI/SNF related, matrix associated, actin dependent regulator of chromatin, subfamily c, member 1 /BRG1-associated factor 155 using the numbering given in entry NP\_003065.2 (GeneID 6599).

**APPLICATIONS**      Centrifuge tube to remove product from lid. Optimal working dilutions should be determined experimentally by the investigator. Prepare working dilution immediately before use.

Western Blot      1:1000

Immunoprecipitation      The antibody contained within A301-020A-T has been qualified for use in immunoprecipitation; however, we recommend using the alternative formulation of this antibody found as product A301-020A.

**APPLICATION NOTES**      Western blot of immunoprecipitates performed using Normal Pig Serum (Cat. No. S100-020), Goat anti-Rabbit Light Chain HRP Conjugate (Cat. No. A120-113P) and 4-8% SDS-PAGE (link to IP-western blot protocol in Additional Info section below).

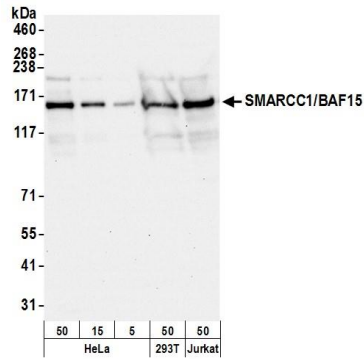
Western blot of lysates performed using standard western blot reagents and 4-8% SDS-PAGE.

**ADDITIONAL INFO**      <https://www.bethyl.com/product/A301-020A-T>

Use the link above to view SDS, a current list of citations, and other product specific information.

IP-western blot protocol: [https://www.bethyl.com/content/protocol\\_IP\\_WB](https://www.bethyl.com/content/protocol_IP_WB)

This document certifies that this product has met all of the quality control standards defined by Bethyl Laboratories, Inc.  
Eric McIntush, PhD | Chief Scientific Officer      Date: June 21, 2019



**Detection of human and mouse SMARCC1/BAF155 by western blot.** *Samples:* Whole cell lysate from HeLa (5, 15 and 50 µg), HEK293T (50 µg), and Jurkat (50 µg) cells prepared using NETN lysis buffer. *Antibody:* Affinity purified rabbit anti-SMARCC1/BAF155 antibody A301-020A-T (lot A301-020A-T-2) used for WB at 1:1000. *Detection:* Chemiluminescence with an exposure time of 10 seconds.