



SZABO SCANDIC

Part of Europa Biosite

Produktinformation



Forschungsprodukte & Biochemikalien



Zellkultur & Verbrauchsmaterial



Diagnostik & molekulare Diagnostik



Laborgeräte & Service

Weitere Information auf den folgenden Seiten!
See the following pages for more information!



Lieferung & Zahlungsart

siehe unsere [Liefer- und Versandbedingungen](#)

Zuschläge

- Mindermengenzuschlag
- Trockeneiszuschlag
- Gefahrgutzuschlag
- Expressversand

SZABO-SCANDIC HandelsgmbH

Quellenstraße 110, A-1100 Wien

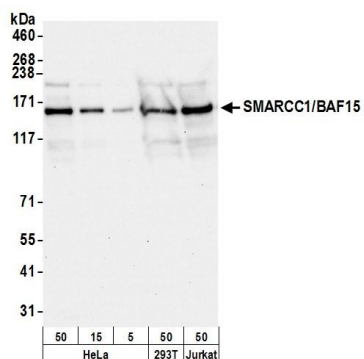
T. +43(0)1 489 3961-0

F. +43(0)1 489 3961-7

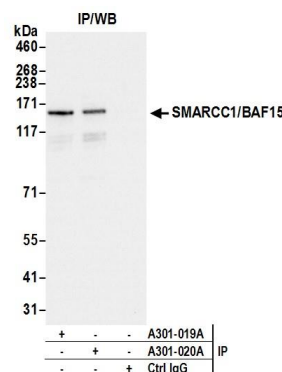
mail@szabo-scandic.com

www.szabo-scandic.com

[linkedin.com/company/szaboscandic](https://www.linkedin.com/company/szaboscandic) 



Detection of human and mouse SMARCC1/BAF155 by western blot. *Samples:* Whole cell lysate from HeLa (5, 15 and 50 µg), HEK293T (50 µg), and Jurkat (50 µg) cells prepared using NETN lysis buffer. *Antibody:* Affinity purified rabbit anti-SMARCC1/BAF155 antibody A301-020A (lot A301-020A-2) used for WB at 0.04 µg/ml. *Detection:* Chemiluminescence with an exposure time of 10 seconds.



Detection of human SMARCC1/BAF155 by western blot of immunoprecipitates. *Samples:* Whole cell lysate (1.0 mg per IP reaction; 20% of IP loaded) from HeLa cells prepared using NETN lysis buffer. *Antibodies:* Affinity purified rabbit anti-SMARCC1/BAF155 antibody A301-020A (lot A301-020A-2) used for IP at 3 µg per reaction. SMARCC1/BAF155 was also immunoprecipitated by rabbit anti-SMARCC1/BAF155 antibody A301-019A. For blotting immunoprecipitated SMARCC1/BAF155, A301-020A was used at 0.4 µg/ml. *Detection:* Chemiluminescence with an exposure time of 3 seconds.