



SZABO SCANDIC

Part of Europa Biosite

Produktinformation



Forschungsprodukte & Biochemikalien



Zellkultur & Verbrauchsmaterial



Diagnostik & molekulare Diagnostik



Laborgeräte & Service

Weitere Information auf den folgenden Seiten!
See the following pages for more information!



Lieferung & Zahlungsart

siehe unsere [Liefer- und Versandbedingungen](#)

Zuschläge

- Mindermengenzuschlag
- Trockeneiszuschlag
- Gefahrgutzuschlag
- Expressversand

SZABO-SCANDIC HandelsgmbH

Quellenstraße 110, A-1100 Wien

T. +43(0)1 489 3961-0

F. +43(0)1 489 3961-7

mail@szabo-scandic.com

www.szabo-scandic.com

[linkedin.com/company/szaboscandic](https://www.linkedin.com/company/szaboscandic) 

SMARCC1/BAF155 Antibody

Rabbit Polyclonal

Antigen Affinity Purified Protein ID NP_003065.2
Catalog No. A301-021A-T GeneID 6599
Lot No. A301-021A-T-1



APPLICATIONS WB, IP
SPECIES REACTIVITY Human
AMOUNT 20 µl (2 blots)
CONCENTRATION 40 µg/ml
STORAGE/SHELF LIFE 2 - 8° C / 1 year from date of receipt
PHYSICAL STATE Liquid
BUFFER Tris-buffered Saline containing 0.1% BSA and 0.09% Sodium Azide
ISOTYPE IgG
ORIGIN USA
PRODUCTION PROCEDURES Antibody was affinity purified using an epitope specific to SMARCC1/BAF155 immobilized on solid support.

The epitope recognized by A301-021A-T maps to a region between residue 1055 and the C-terminus (residue 1105) of human SWI/SNF related, matrix associated, actin dependent regulator of chromatin, subfamily c, member 1/BRG1-associated factor 155 using the numbering given in entry NP_003065.2 (GeneID 6599).

APPLICATIONS Centrifuge tube to remove product from lid. Optimal working dilutions should be determined experimentally by the investigator. Prepare working dilution immediately before use.

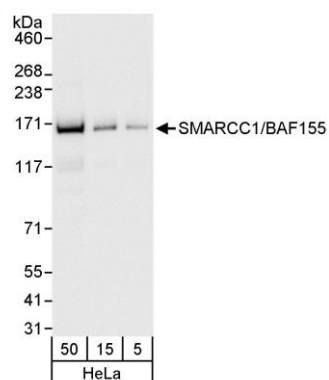
Western Blot 1:1000
Immunoprecipitation The antibody contained within A301-021A-T has been qualified for use in immunoprecipitation; however, we recommend using the alternative formulation of this antibody found as product A301-021A.

APPLICATION NOTES Western blot of immunoprecipitates performed using Normal Pig Serum (Cat. No. S100-020), Goat anti-Rabbit Light Chain HRP Conjugate (Cat. No. A120-113P) and 4-8% SDS-PAGE (link to IP-western blot protocol in Additional Info section below).

Western blot of lysates performed using standard western blot reagents and 4-8% SDS-PAGE.

ADDITIONAL INFO <https://www.bethyl.com/product/A301-021A-T>
Use the link above to view SDS, a current list of citations, and other product specific information.
IP-western blot protocol: https://www.bethyl.com/content/protocol_IP_WB

This document certifies that this product has met all of the quality control standards defined by Bethyl Laboratories, Inc.
Eric McIntush, PhD | Chief Scientific Officer Date: June 21, 2019

**Detection of human SMARCC1/BAF155 by western blot.**

Samples: Whole cell lysate (5, 15, and 50 µg) from HeLa

cells. *Antibody:* Affinity purified rabbit anti-

SMARCC1/BAF155 antibody A301-021A-T used at 1:1000.

Detection: Chemiluminescence with an exposure time of 1 second.