



SZABO SCANDIC

Part of Europa Biosite

Produktinformation



Forschungsprodukte & Biochemikalien



Zellkultur & Verbrauchsmaterial



Diagnostik & molekulare Diagnostik



Laborgeräte & Service

Weitere Information auf den folgenden Seiten!
See the following pages for more information!



Lieferung & Zahlungsart

siehe unsere [Liefer- und Versandbedingungen](#)

Zuschläge

- Mindermengenzuschlag
- Trockeneiszuschlag
- Gefahrgutzuschlag
- Expressversand

SZABO-SCANDIC HandelsgmbH

Quellenstraße 110, A-1100 Wien

T. +43(0)1 489 3961-0

F. +43(0)1 489 3961-7

mail@szabo-scandic.com

www.szabo-scandic.com

[linkedin.com/company/szaboscandic](https://www.linkedin.com/company/szaboscandic) 

CEP170 Antibody

Rabbit Polyclonal

Antigen Affinity Purified Protein ID NP_055627.2
Catalog No. A301-024A-T GeneID 9859
Lot No. A301-024A-T-2



APPLICATIONS WB, IP, ICC-IF, ChIP-Seq
SPECIES REACTIVITY Human
AMOUNT 20 µl (2 blots)
CONCENTRATION 40 µg/ml
STORAGE/SHELF LIFE 2 – 8° C / 1 year from date of receipt
PHYSICAL STATE Liquid
BUFFER Tris-buffered Saline containing 0.1% BSA and 0.09% Sodium Azide
ISOTYPE IgG
ORIGIN USA
PRODUCTION PROCEDURES Antibody was affinity purified using an epitope specific to CEP170 immobilized on solid support.

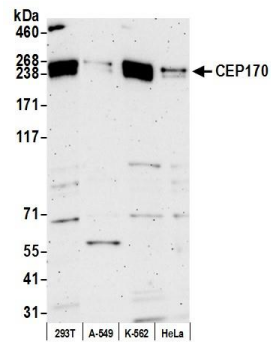
The epitope recognized by A301-024A-T maps to a region between residue 1534 and the C-terminus (residue 1584) of human centrosomal protein 170kDa using the numbering given in entry NP_055627.2 (GeneID 9859).

APPLICATIONS Centrifuge tube to remove product from lid. Optimal working dilutions should be determined experimentally by the investigator. Prepare working dilution immediately before use.

Western Blot	1:1000
Immunoprecipitation	The antibody contained within A301-024A-T has been qualified for use in immunoprecipitation; however, we recommend using the alternative formulation of this antibody found as product A301-024A.
Immunofluorescence (ICC)	1:20 – 1:100. Formaldehyde fixation is recommended. Permeabilization with Triton-X 100 is recommended for formaldehyde-fixed cells.
ChIP-Seq	The antibody contained within A301-024A-T has been qualified for use in ChIP-Seq; however, we recommend using the alternative formulation of this antibody found as product A301-024A.

ADDITIONAL INFO <https://www.bethyl.com/product/A301-024A-T>
Use the link above to view SDS, a current list of citations, and other product specific information.
IP-western blot protocol: https://www.bethyl.com/content/protocol_IP_WB

This document certifies that this product has met all of the quality control standards defined by Bethyl Laboratories, Inc.
Eric McIntush, PhD | Chief Scientific Officer Date: July 28, 2020



Detection of human CEP170 by western blot. *Samples:* Whole cell lysate (15 μ g) from HEK293T, A-549, K-562, and HeLa cells prepared using NETN lysis buffer. *Antibody:* Affinity purified rabbit anti-CEP170 antibody A301-024A-T (lot A301-024A-T-2) used for WB at 1:1000. *Detection:* Chemiluminescence with an exposure time of 3 minutes.