



SZABO SCANDIC

Part of Europa Biosite

Produktinformation



Forschungsprodukte & Biochemikalien



Zellkultur & Verbrauchsmaterial



Diagnostik & molekulare Diagnostik



Laborgeräte & Service

Weitere Information auf den folgenden Seiten!
See the following pages for more information!



Lieferung & Zahlungsart

siehe unsere [Liefer- und Versandbedingungen](#)

Zuschläge

- Mindermengenzuschlag
- Trockeneiszuschlag
- Gefahrgutzuschlag
- Expressversand

SZABO-SCANDIC HandelsgmbH

Quellenstraße 110, A-1100 Wien

T. +43(0)1 489 3961-0

F. +43(0)1 489 3961-7

mail@szabo-scandic.com

www.szabo-scandic.com

[linkedin.com/company/szaboscandic](https://www.linkedin.com/company/szaboscandic) 

SMARCC2/BAF170 Antibody

Rabbit Polyclonal

Antigen Affinity Purified Protein ID NP_003066.2

Catalog No. A301-039A-T GeneID 6601

Lot No. A301-039A-T-1



APPLICATIONS	WB, IP, IHC
SPECIES REACTIVITY	Human, Mouse
AMOUNT	20 µl (2 blots)
CONCENTRATION	40 µg/ml
STORAGE/SHELF LIFE	2 - 8° C / 1 year from date of receipt
PHYSICAL STATE	Liquid
BUFFER	Tris-buffered Saline containing 0.1% BSA and 0.09% Sodium Azide
ISOTYPE	IgG
ORIGIN	USA
PRODUCTION PROCEDURES	Antibody was affinity purified using an epitope specific to SMARCC2/BAF170 immobilized on solid support.

The epitope recognized by A301-039A-T maps to a region between residue 1164 and the C-terminus (residue 1214) of human SWI/SNF related, matrix associated, actin dependent regulator of chromatin, subfamily c, member 2 (BRG1-associated factor 170) using the numbering given in entry NP_003066.2 (GeneID 6601).

APPLICATIONS Centrifuge tube to remove product from lid. Optimal working dilutions should be determined experimentally by the investigator. Prepare working dilution immediately before use.

Western Blot 1:1000

Immunoprecipitation The antibody contained within A301-039A-T has been qualified for use in immunoprecipitation; however, we recommend using the alternative formulation of this antibody found as product A301-039A.

Immunohistochemistry 1:40 - 1:200. Epitope retrieval with citrate buffer pH 6.0 is recommended for FFPE tissue sections.

APPLICATION NOTES Western blot of immunoprecipitates performed using Normal Pig Serum (Cat. No. S100-020), Goat anti-Rabbit Light Chain HRP Conjugate (Cat. No. A120-113P) and 4-8% SDS-PAGE (link to IP-western blot protocol in Additional Info section below).

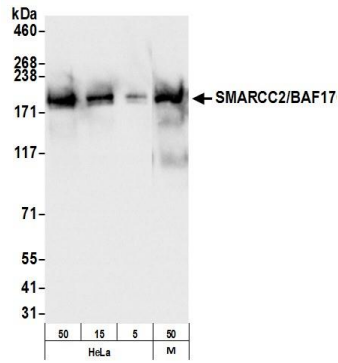
Western blot of lysates performed using standard western blot reagents and 4-8% SDS-PAGE.

ADDITIONAL INFO <https://www.bethyl.com/product/A301-039A-T>

Use the link above to view SDS, a current list of citations, and other product specific information.

IP-western blot protocol https://www.bethyl.com/content/protocol_IP_WB

This document certifies that this product has met all of the quality control standards defined by Bethyl Laboratories, Inc.
Eric McIntush, PhD | Chief Scientific Officer Date: October 17, 2019



Detection of human and mouse SMARCC2/BAF170 by western blot. *Samples:* Whole cell lysate from HeLa (5, 15, 50 µg) and mouse NIH 3T3 (M; 50 µg) cells. *Antibody:* Affinity purified rabbit anti-SMARCC2/BAF170 antibody A301-039A-M (lot A301-039A-M-1) used for WB at 1:1000. *Detection:* Chemiluminescence with an exposure time of 1 second.