



# SZABO SCANDIC

Part of Europa Biosite

## Produktinformation



Forschungsprodukte & Biochemikalien



Zellkultur & Verbrauchsmaterial



Diagnostik & molekulare Diagnostik



Laborgeräte & Service

Weitere Information auf den folgenden Seiten!  
See the following pages for more information!



### Lieferung & Zahlungsart

siehe unsere [Liefer- und Versandbedingungen](#)

### Zuschläge

- Mindermengenzuschlag
- Trockeneiszuschlag
- Gefahrgutzuschlag
- Expressversand

### SZABO-SCANDIC HandelsgmbH

Quellenstraße 110, A-1100 Wien

T. +43(0)1 489 3961-0

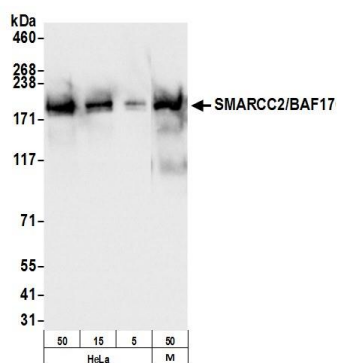
F. +43(0)1 489 3961-7

[mail@szabo-scandic.com](mailto:mail@szabo-scandic.com)

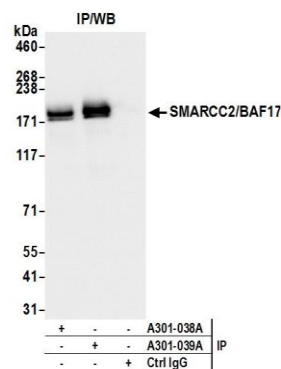
[www.szabo-scandic.com](http://www.szabo-scandic.com)

[linkedin.com/company/szaboscandic](https://www.linkedin.com/company/szaboscandic) 

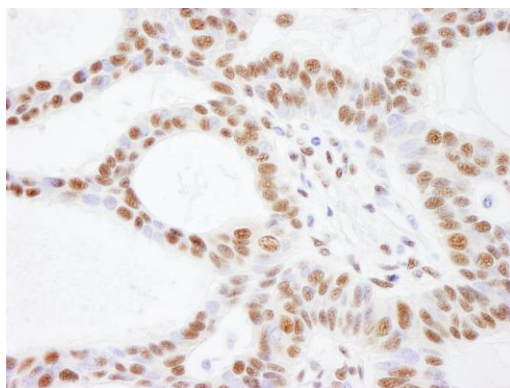




**Detection of human and mouse SMARCC2/BAF170 by western blot.** *Samples:* Whole cell lysate from HeLa (5, 15, 50 µg) and mouse NIH 3T3 (M; 50 µg) cells. *Antibody:* Affinity purified rabbit anti-SMARCC2/BAF170 antibody A301-039A (lot A301-039A-1) used for WB at 0.04 µg/ml. *Detection:* Chemiluminescence with an exposure time of 1 second.



**Detection of human SMARCC2/BAF170 by western blot of immunoprecipitates.** *Samples:* Whole cell lysate (1.0 mg per IP reaction; 20% of IP loaded) from HeLa cells. *Antibodies:* Affinity purified rabbit anti-SMARCC2/BAF170 antibody A301-039A (lot A301-039A-1) used for IP at 3 µg per reaction. SMARCC2/BAF170 was also immunoprecipitated by rabbit anti-SMARCC2/BAF170 antibody A301-038A. For blotting immunoprecipitated SMARCC2/BAF170, A301-039A was used at 1 µg/ml. *Detection:* Chemiluminescence with an exposure time of 1 second.



**Detection of human SMARCC2/BAF170 by immunohistochemistry.** *Sample:* FFPE section of human skin basal cell carcinoma. *Antibody:* Affinity purified rabbit anti-SMARCC2/BAF170 (Cat. No. A301-039A Lot1) used at a dilution of 1:200 (1 µg/ml). *Detection:* DAB