



SZABO SCANDIC

Part of Europa Biosite

Produktinformation



Forschungsprodukte & Biochemikalien



Zellkultur & Verbrauchsmaterial



Diagnostik & molekulare Diagnostik



Laborgeräte & Service

Weitere Information auf den folgenden Seiten!
See the following pages for more information!



Lieferung & Zahlungsart

siehe unsere [Liefer- und Versandbedingungen](#)

Zuschläge

- Mindermengenzuschlag
- Trockeneiszuschlag
- Gefahrgutzuschlag
- Expressversand

SZABO-SCANDIC HandelsgmbH

Quellenstraße 110, A-1100 Wien

T. +43(0)1 489 3961-0

F. +43(0)1 489 3961-7

mail@szabo-scandic.com

www.szabo-scandic.com

[linkedin.com/company/szaboscandic](https://www.linkedin.com/company/szaboscandic) 

DDX46 Antibody

Rabbit Polyclonal

Antigen Affinity Purified Protein ID NP_055644.2

Catalog No. A301-051A-T GeneID 9879

Lot No. A301-051A-T-1



APPLICATIONS	IP, IHC
SPECIES REACTIVITY	Human, Mouse
PRESUMED REACTIVITY	Based on 100% sequence identity, this antibody is predicted to react with Rat and Orangutan
AMOUNT	10 µl
CONCENTRATION	1000 µg/ml
STORAGE/SHELF LIFE	2 - 8° C / 1 year from date of receipt
PHYSICAL STATE	Liquid
BUFFER	Tris-citrate/phosphate buffer, pH 7 to 8 containing 0.09% Sodium Azide
ISOTYPE	IgG
ORIGIN	USA
PRODUCTION PROCEDURES	Antibody was affinity purified using an epitope specific to DDX46 immobilized on solid support.

The epitope recognized by A301-051A-T maps to a region between residue 300 and 350 of human DEAD (Asp-Glu-Ala-Asp) box polypeptide 46 using the numbering given in entry NP_055644.2 (GeneID 9879).

Immunoglobulin concentration was determined by extinction coefficient: absorbance at 280 nm of 1.4 equals 1.0 mg of IgG.

APPLICATIONS Centrifuge tube to remove product from lid. Optimal working dilutions should be determined experimentally by the investigator. Prepare working dilution immediately before use.

Western Blot Not recommended. Use rabbit anti-DDX46 antibody A301-052A-T.

Immunoprecipitation 2 - 5 µg/mg lysate

Immunohistochemistry 1:500 - 1:2,000. Epitope retrieval with citrate buffer pH 6.0 is recommended for FFPE tissue sections.

APPLICATION NOTES Western blot of immunoprecipitates performed using Normal Pig Serum (Cat. No. S100-020), Goat anti-Rabbit Light Chain HRP Conjugate (Cat. No. A120-113P) and 4-8% SDS-PAGE (link to IP-western blot protocol in Additional Info section below).

ADDITIONAL INFO <https://www.bethyl.com/product/A301-051A-T>

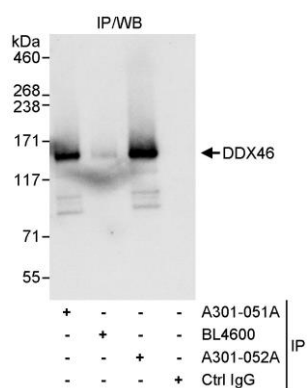
Use the link above to view SDS, a current list of citations, and other product specific information.

IP-western blot protocol: https://www.bethyl.com/content/protocol_IP_WB

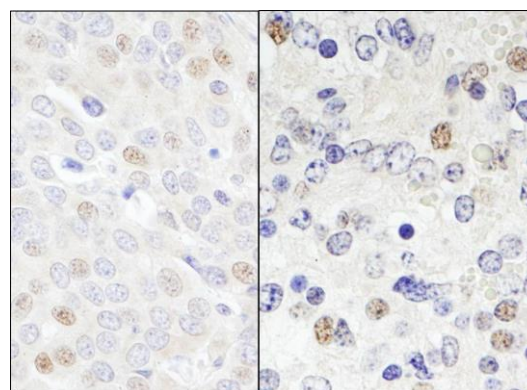
This document certifies that this product has met all of the quality control standards defined by Bethyl Laboratories, Inc.

Eric McIntush, PhD | Chief Scientific Officer

Date: June 21, 2019



Detection of human DDX46 by western blot of immunoprecipitates. *Samples:* Whole cell lysate (1 mg for IP, 20% of IP loaded) from HeLa cells. *Antibody:* Affinity purified rabbit anti-DDX46 antibody A301-051A-T used for IP at 3 µg/mg lysate. DDX46 was also immunoprecipitated by rabbit anti-DDX46 antibody A301-052A, which recognizes a downstream epitope. For blotting immunoprecipitated DDX46, A301-052A was used at 1 µg/ml. *Detection:* Chemiluminescence with an exposure time of 3 seconds.



Detection of human and mouse DDX46 by immunohistochemistry. *Samples:* FFPE section of human breast carcinoma (left) and mouse teratoma (right). *Antibody:* Affinity purified rabbit anti-DDX46 (Cat. No. A301-051A-T) used at a dilution of 1:1,000 (0.2 µg/ml). *Detection:* DAB.