



SZABO SCANDIC

Part of Europa Biosite

Produktinformation



Forschungsprodukte & Biochemikalien



Zellkultur & Verbrauchsmaterial



Diagnostik & molekulare Diagnostik



Laborgeräte & Service

Weitere Information auf den folgenden Seiten!
See the following pages for more information!



Lieferung & Zahlungsart

siehe unsere [Liefer- und Versandbedingungen](#)

Zuschläge

- Mindermengenzuschlag
- Trockeneiszuschlag
- Gefahrgutzuschlag
- Expressversand

SZABO-SCANDIC HandelsgmbH

Quellenstraße 110, A-1100 Wien

T. +43(0)1 489 3961-0

F. +43(0)1 489 3961-7

mail@szabo-scandic.com

www.szabo-scandic.com

[linkedin.com/company/szaboscandic](https://www.linkedin.com/company/szaboscandic) 

TRIM33/TIF1 gamma Antibody

Rabbit Polyclonal

Antigen Affinity Purified Protein ID NP_056990.3

Catalog No. A301-059A-T GeneID 51592

Lot No. A301-059A-T-2



APPLICATIONS	IP, IHC
SPECIES REACTIVITY	Human, Mouse
PRESUMED REACTIVITY	Based on 100% sequence identity, this antibody is predicted to react with <i>X. laevis</i>
AMOUNT	10 µl
CONCENTRATION	1000 µg/ml
STORAGE/SHELF LIFE	2 - 8° C / 1 year from date of receipt
PHYSICAL STATE	Liquid
BUFFER	Tris-citrate/phosphate buffer, pH 7 to 8 containing 0.09% Sodium Azide
ISOTYPE	IgG
ORIGIN	USA
PRODUCTION PROCEDURES	Antibody was affinity purified using an epitope specific to TRIM33/TIF1 gamma immobilized on solid support.

The epitope recognized by A301-059A-T maps to a region between residue 650 and 700 of human tripartite motif-containing 33 (transcriptional intermediary factor 1 gamma) using the numbering given in entry NP_056990.3 (GeneID 51592).

Immunoglobulin concentration was determined by extinction coefficient: absorbance at 280 nm of 1.4 equals 1.0 mg of IgG.

APPLICATIONS Centrifuge tube to remove product from lid. Optimal working dilutions should be determined experimentally by the investigator. Prepare working dilution immediately before use.

Western Blot Not recommended. Use rabbit anti-TRIM33/TIF1 gamma antibody A301-058A-T or A301-060A-T.

Immunoprecipitation 2 - 5 µg/mg lysate

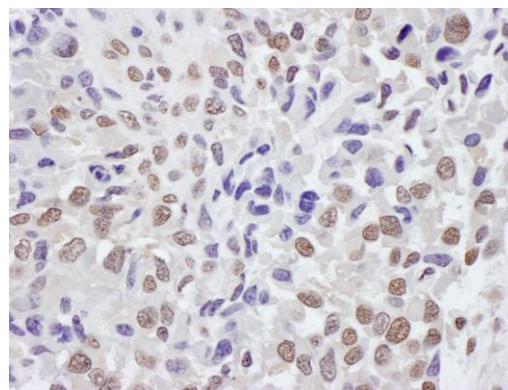
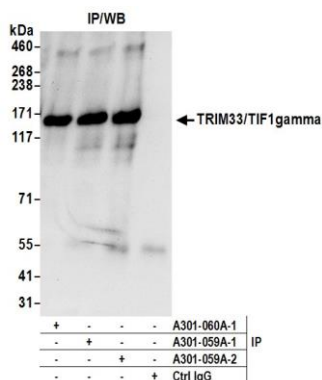
Immunohistochemistry 1:500 - 1:2,000. Epitope retrieval with citrate buffer pH 6.0 is recommended for FFPE tissue sections.

APPLICATION NOTES Western blot of immunoprecipitates performed using Normal Pig Serum (Cat. No. S100-020), Goat anti-Rabbit Light Chain HRP Conjugate (Cat. No. A120-113P) and 4-8% SDS-PAGE (link to IP-western blot protocol in Additional Info section below).

ADDITIONAL INFO <https://www.bethyl.com/product/A301-059A-T>

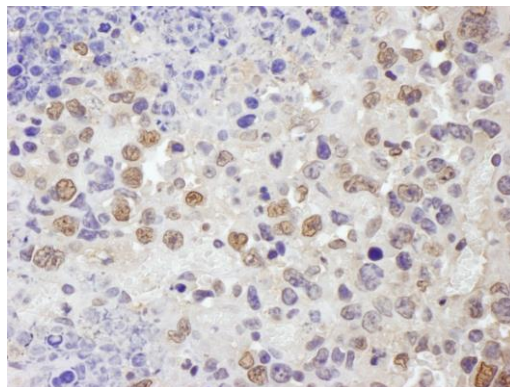
Use the link above to view SDS, a current list of citations, and other product specific information. IP-western blot protocol: https://www.bethyl.com/content/protocol_IP_WB

This document certifies that this product has met all of the quality control standards defined by Bethyl Laboratories, Inc.
Eric McIntush, PhD | Chief Scientific Officer Date: June 21, 2019



Detection of human TRIM33/TIF1gamma by western blot of immunoprecipitates. *Samples:* Whole cell lysate (0.5 or 1.0 mg per IP reaction; 20% of IP loaded) from HeLa cells prepared using NETN lysis buffer. *Antibody:* Affinity purified rabbit anti-TRIM33/TIF1gamma antibody A301-059A-T (lot A301-059A-T-2) used for IP at 6 µg per reaction. TRIM33/TIF1gamma was also immunoprecipitated by a previous lot of this antibody (Lot A301-059A-1) and rabbit anti-TRIM33/TIF1gamma antibody A301-060A. For blotting immunoprecipitated TRIM33/TIF1gamma, A301-059A was used at 1 µg/ml. *Detection:* Chemiluminescence with an exposure time of 10 seconds.

Detection of human T TRIM33/TIF1gamma by immunohistochemistry. *Sample:* FFPE section of human osteosarcoma. *Antibody:* Affinity purified rabbit anti-TRIM33/TIF1gamma (Cat. No. A301-059A-T Lot2) used at a dilution of 1:1,000 (1 µg/ml). *Detection:* DAB



Detection of mouse TRIM33/TIF1gamma by immunohistochemistry. *Sample:* FFPE section of mouse plasmacytoma. *Antibody:* Affinity purified rabbit anti-TRIM33/TIF1gamma (Cat. No. A301-059A-T Lot2) used at a dilution of 1:1,000 (1 µg/ml). *Detection:* DAB

