



SZABO SCANDIC

Part of Europa Biosite

Produktinformation



Forschungsprodukte & Biochemikalien



Zellkultur & Verbrauchsmaterial



Diagnostik & molekulare Diagnostik



Laborgeräte & Service

Weitere Information auf den folgenden Seiten!
See the following pages for more information!



Lieferung & Zahlungsart

siehe unsere [Liefer- und Versandbedingungen](#)

Zuschläge

- Mindermengenzuschlag
- Trockeneiszuschlag
- Gefahrgutzuschlag
- Expressversand

SZABO-SCANDIC HandelsgmbH

Quellenstraße 110, A-1100 Wien

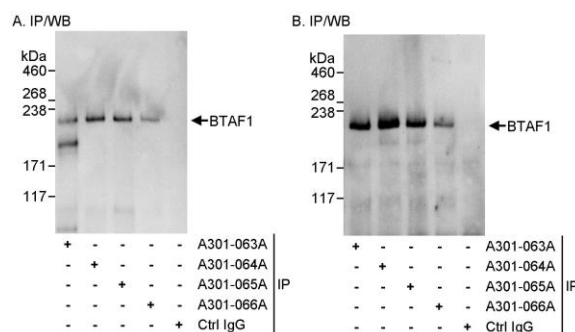
T. +43(0)1 489 3961-0

F. +43(0)1 489 3961-7

mail@szabo-scandic.com

www.szabo-scandic.com

[linkedin.com/company/szaboscandic](https://www.linkedin.com/company/szaboscandic) 



Detection of human BTAF1 by western blot of immunoprecipitates. *Samples:* Whole cell lysate (1 mg for IP, 20% of IP loaded) from HeLa cells. *Antibodies:* Affinity purified rabbit anti-BTAF1 antibody A301-064A used for IP at 3 $\mu\text{g}/\text{mg}$ lysate (A and B). BTAF1 was also immunoprecipitated by rabbit anti-BTAF1 antibodies A301-063A and A301-065A, which recognize other epitopes. For blotting immunoprecipitated BTAF1, A301-063A (A) and A301-066A (B) were used at 1 $\mu\text{g}/\text{ml}$. *Detection:* Chemiluminescence with exposure times of 3 seconds (A) and 30 seconds (B).