



SZABO SCANDIC

Part of Europa Biosite

Produktinformation



Forschungsprodukte & Biochemikalien



Zellkultur & Verbrauchsmaterial



Diagnostik & molekulare Diagnostik



Laborgeräte & Service

Weitere Information auf den folgenden Seiten!
See the following pages for more information!



Lieferung & Zahlungsart

siehe unsere [Liefer- und Versandbedingungen](#)

Zuschläge

- Mindermengenzuschlag
- Trockeneiszuschlag
- Gefahrgutzuschlag
- Expressversand

SZABO-SCANDIC HandelsgmbH

Quellenstraße 110, A-1100 Wien

T. +43(0)1 489 3961-0

F. +43(0)1 489 3961-7

mail@szabo-scandic.com

www.szabo-scandic.com

[linkedin.com/company/szaboscandic](https://www.linkedin.com/company/szaboscandic) 

KIF1C/LTXS1 Antibody

Rabbit Polyclonal

Antigen Affinity Purified

Protein ID NP_006603.2

Catalog No. A301-072A-T

GeneID 10749

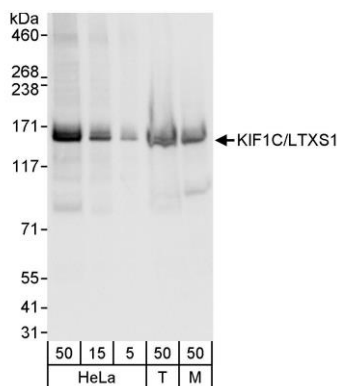
Lot No. A301-072A-T-1



| | | | | | |
|------------------------------|--|--------------|--------|---------------------|---|
| APPLICATIONS | WB, IP | | | | |
| SPECIES REACTIVITY | Human, Mouse | | | | |
| PRESUMED REACTIVITY | Based on 100% sequence identity, this antibody is predicted to react with Rat | | | | |
| AMOUNT | 20 µl (2 blots) | | | | |
| CONCENTRATION | 40 µg/ml | | | | |
| STORAGE/SHELF LIFE | 2 - 8° C / 1 year from date of receipt | | | | |
| PHYSICAL STATE | Liquid | | | | |
| BUFFER | Tris-buffered Saline containing 0.1% BSA and 0.09% Sodium Azide | | | | |
| ISOTYPE | IgG | | | | |
| ORIGIN | USA | | | | |
| PRODUCTION PROCEDURES | <p>Antibody was affinity purified using an epitope specific to KIF1C/LTXS1 immobilized on solid support.</p> <p>The epitope recognized by A301-072A-T maps to a region between residue 1053 and the C-terminus (residue 1103) of human kinesin family member 1C (lethal toxin sensitivity 1) using the numbering given in entry NP_006603.2 (GeneID 10749).</p> | | | | |
| APPLICATIONS | <p>Centrifuge tube to remove product from lid. Optimal working dilutions should be determined experimentally by the investigator. Prepare working dilution immediately before use.</p> <table><tr><td>Western Blot</td><td>1:1000</td></tr><tr><td>Immunoprecipitation</td><td>The antibody contained within A301-072A-T has been qualified for use in immunoprecipitation; however, we recommend using the alternative formulation of this antibody found as product A301-072A.</td></tr></table> | Western Blot | 1:1000 | Immunoprecipitation | The antibody contained within A301-072A-T has been qualified for use in immunoprecipitation; however, we recommend using the alternative formulation of this antibody found as product A301-072A. |
| Western Blot | 1:1000 | | | | |
| Immunoprecipitation | The antibody contained within A301-072A-T has been qualified for use in immunoprecipitation; however, we recommend using the alternative formulation of this antibody found as product A301-072A. | | | | |
| APPLICATION NOTES | <p>Western blot of immunoprecipitates performed using Normal Pig Serum (Cat. No. S100-020), Goat anti-Rabbit Light Chain HRP Conjugate (Cat. No. A120-113P) and 4-8% SDS-PAGE (link to IP-western blot protocol in Additional Info section below).</p> <p>Western blot of lysates performed using standard western blot reagents and 4-8% SDS-PAGE.</p> | | | | |
| ADDITIONAL INFO | <p>https://www.bethyl.com/product/A301-072A-T</p> <p>Use the link above to view SDS, a current list of citations, and other product specific information.</p> <p>IP-western blot protocol: https://www.bethyl.com/content/protocol_IP_WB</p> | | | | |

This document certifies that this product has met all of the quality control standards defined by Bethyl Laboratories, Inc.
Eric McIntush, PhD | Chief Scientific Officer

Date: June 21, 2019



Detection of human and mouse KIF1C/LTXS1 by western blot. *Samples:* Whole cell lysate from HeLa (5, 15, and 50 μ g), HEK293T (T; 50 μ g) and mouse NIH 3T3 (M; 50 μ g) cells. *Antibody:* Affinity purified rabbit anti-KIF1C/LTXS1 antibody A301-072A-T used at 1:1000. *Detection:* Chemiluminescence with an exposure time of 3 seconds.