



SZABO SCANDIC

Part of Europa Biosite

Produktinformation



Forschungsprodukte & Biochemikalien



Zellkultur & Verbrauchsmaterial



Diagnostik & molekulare Diagnostik



Laborgeräte & Service

Weitere Information auf den folgenden Seiten!
See the following pages for more information!



Lieferung & Zahlungsart

siehe unsere [Liefer- und Versandbedingungen](#)

Zuschläge

- Mindermengenzuschlag
- Trockeneiszuschlag
- Gefahrgutzuschlag
- Expressversand

SZABO-SCANDIC HandelsgmbH

Quellenstraße 110, A-1100 Wien

T. +43(0)1 489 3961-0

F. +43(0)1 489 3961-7

mail@szabo-scandic.com

www.szabo-scandic.com

[linkedin.com/company/szaboscandic](https://www.linkedin.com/company/szaboscandic) 

KIF1C/LTXS1 Antibody

Rabbit Polyclonal

Antigen Affinity Purified

Protein ID NP_006603.2

Catalog No. A301-072A

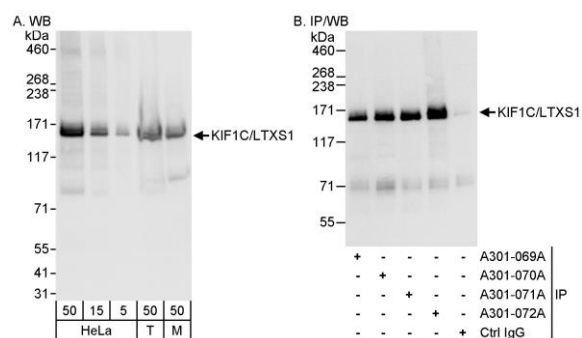
GeneID 10749

Lot No. A301-072A-1



APPLICATIONS	WB, IP
SPECIES REACTIVITY	Human, Mouse
PRESUMED REACTIVITY	Based on 100% sequence identity, this antibody is predicted to react with Rat
AMOUNT	100 µl
CONCENTRATION	200 µg/ml
STORAGE/SHELF LIFE	2 - 8° C / 1 year from date of receipt
PHYSICAL STATE	Liquid
BUFFER	Tris-buffered Saline containing 0.1% BSA and 0.09% Sodium Azide
ISOTYPE	IgG
ORIGIN	USA
PRODUCTION PROCEDURES	<p>Antibody was affinity purified using an epitope specific to KIF1C/LTXS1 immobilized on solid support.</p> <p>The epitope recognized by A301-072A maps to a region between residue 1053 and the C-terminus (residue 1103) of human kinesin family member 1C (lethal toxin sensitivity 1) using the numbering given in entry NP_006603.2 (GeneID 10749).</p> <p>Immunoglobulin concentration was determined by extinction coefficient: absorbance at 280 nm of 1.4 equals 1.0 mg of IgG.</p>
APPLICATIONS	<p>Centrifuge tube to remove product from lid. Optimal working dilutions should be determined experimentally by the investigator. Prepare working dilution immediately before use.</p> <p>Western Blot 1:2,000 - 1:10,000</p> <p>Immunoprecipitation 2 - 5 µg/mg lysate</p>
APPLICATION NOTES	<p>Western blot of immunoprecipitates performed using Normal Pig Serum (Cat. No. S100-020), Goat anti-Rabbit Light Chain HRP Conjugate (Cat. No. A120-113P) and 4-8% SDS-PAGE (link to IP-western blot protocol in Additional Info section below).</p> <p>Western blot of lysates performed using standard western blot reagents and 4-8% SDS-PAGE.</p>
ADDITIONAL INFO	<p>https://www.bethyl.com/product/A301-072A</p> <p>Use the link above to view SDS, a current list of citations, and other product specific information.</p> <p>IP-western blot protocol: https://www.bethyl.com/content/protocol_IP_WB</p>

This document certifies that this product has met all of the quality control standards defined by Bethyl Laboratories, Inc.
Eric McIntush, PhD | Chief Scientific Officer Date: June 21, 2019



Detection of human and mouse KIF1C/LTXS1 by western blot (h&m) and immunoprecipitation (h). *Samples:* Whole cell lysate from HeLa (5, 15 and 50 μ g for WB; 1 mg for IP, 20% of IP loaded), HEK293T (T; 50 μ g) and mouse NIH 3T3 (M; 50 μ g) cells. *Antibodies:* Affinity purified rabbit anti-KIF1C/LTXS1 antibody A301-072A used for WB at 0.04 μ g/ml (A) and 1 μ g/ml (B) and used for IP at 3 μ g/mg lysate. KIF1C/LTXS1 was also immunoprecipitated by rabbit anti-KIF1C/LTXS1 antibodies A301-069A, A301-070A and A301-071A, which recognize upstream epitopes. *Detection:* Chemiluminescence with exposure times of 3 seconds (A) and 1 second (B).