



SZABO SCANDIC

Part of Europa Biosite

Produktinformation



Forschungsprodukte & Biochemikalien



Zellkultur & Verbrauchsmaterial



Diagnostik & molekulare Diagnostik



Laborgeräte & Service

Weitere Information auf den folgenden Seiten!
See the following pages for more information!



Lieferung & Zahlungsart

siehe unsere [Liefer- und Versandbedingungen](#)

Zuschläge

- Mindermengenzuschlag
- Trockeneiszuschlag
- Gefahrgutzuschlag
- Expressversand

SZABO-SCANDIC HandelsgmbH

Quellenstraße 110, A-1100 Wien

T. +43(0)1 489 3961-0

F. +43(0)1 489 3961-7

mail@szabo-scandic.com

www.szabo-scandic.com

[linkedin.com/company/szaboscandic](https://www.linkedin.com/company/szaboscandic) 

KIF18A Antibody

Rabbit Polyclonal

Antigen Affinity Purified

Protein ID NP_112494.2

Catalog No. A301-080A-T

GeneID 81930

Lot No. A301-080A-T-5



APPLICATIONS	WB, IP
SPECIES REACTIVITY	Human
AMOUNT	20 µl (2 blots)
CONCENTRATION	200 µg/ml
STORAGE/SHELF LIFE	2 – 8° C / 1 year from date of receipt
PHYSICAL STATE	Liquid
BUFFER	Tris-buffered Saline containing 0.1% BSA and 0.09% Sodium Azide
ISOTYPE	IgG
ORIGIN	USA
PRODUCTION PROCEDURES	Antibody was affinity purified using an epitope specific to KIF18A immobilized on solid support.

The epitope recognized by A301-080A-T maps to a region between residue 848 and the C-terminus (residue 898) of human kinesin family member 18A using the numbering given in entry NP_112494.2 (GeneID 81930).

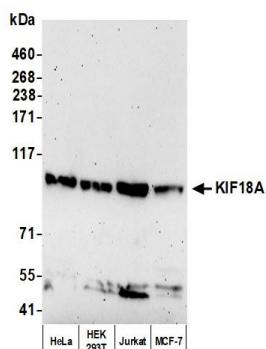
APPLICATIONS Centrifuge tube to remove product from lid. Optimal working dilutions should be determined experimentally by the investigator. Prepare working dilution immediately before use.

Western Blot 1:1000

Immunoprecipitation The antibody contained within A301-080A-T has been qualified for use in immunoprecipitation; however, we recommend using the alternative formulation of this antibody found as product A301-080A.

ADDITIONAL INFO <https://www.bethyl.com/product/A301-080A-T>
Use the link above to view SDS, a current list of citations, and other product specific information.
IP-western blot protocol: https://www.bethyl.com/content/protocol_IP_WB

This document certifies that this product has met all of the quality control standards defined by Bethyl Laboratories, Inc.
Brian McWilliams, PhD Date: June 22, 2021



Detection of human KIF18A by western blot. *Samples:* Whole cell lysate (50 μ g) from HeLa, HEK293T, Jurkat, and MCF-7 cells prepared using NETN lysis buffer. *Antibody:* Affinity purified rabbit anti-KIF18A antibody (A301-080A-T lot 5) used for WB at 1:1000. *Detection:* Chemiluminescence with an exposure time of 3 minutes.