



SZABO SCANDIC

Part of Europa Biosite

Produktinformation



Forschungsprodukte & Biochemikalien



Zellkultur & Verbrauchsmaterial



Diagnostik & molekulare Diagnostik



Laborgeräte & Service

Weitere Information auf den folgenden Seiten!
See the following pages for more information!



Lieferung & Zahlungsart

siehe unsere [Liefer- und Versandbedingungen](#)

Zuschläge

- Mindermengenzuschlag
- Trockeneiszuschlag
- Gefahrgutzuschlag
- Expressversand

SZABO-SCANDIC HandelsgmbH

Quellenstraße 110, A-1100 Wien

T. +43(0)1 489 3961-0

F. +43(0)1 489 3961-7

mail@szabo-scandic.com

www.szabo-scandic.com

[linkedin.com/company/szaboscandic](https://www.linkedin.com/company/szaboscandic) 

CHD4 Antibody

Rabbit Polyclonal

Antigen Affinity Purified Protein ID NP_001264.2

Catalog No. A301-083A GeneID 1108

Lot No. A301-083A-1



APPLICATIONS WB, IP
SPECIES REACTIVITY Human, Mouse
AMOUNT 100 µl
CONCENTRATION 200 µg/ml
STORAGE/SHELF LIFE 2 – 8° C / 1 year from date of receipt
PHYSICAL STATE Liquid
BUFFER Tris-buffered Saline containing 0.1% BSA and 0.09% Sodium Azide
ISOTYPE IgG
ORIGIN USA

PRODUCTION PROCEDURES Antibody was affinity purified using an epitope specific to CHD4 immobilized on solid support.
The epitope recognized by A301-083A maps to a region between residue 1625 and 1675 of human chromodomain helicase DNA binding protein 4 (Mi2 autoantigen 218 kDa protein) using the numbering given in entry NP_001264.2 (GeneID 1108).

Immunoglobulin concentration was determined by extinction coefficient: absorbance at 280 nm of 1.4 equals 1.0 mg of IgG.

APPLICATIONS Centrifuge tube to remove product from lid. Optimal working dilutions should be determined experimentally by the investigator. Prepare working dilution immediately before use.

Western Blot 1:2,000 – 1:10,000

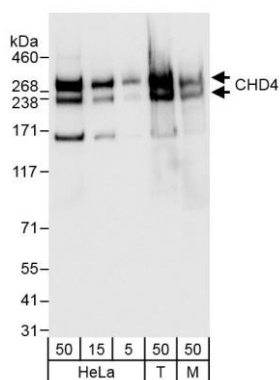
Immunoprecipitation 2 – 10 µg/mg lysate

APPLICATION NOTES Western blot of immunoprecipitates performed using Normal Pig Serum (Cat. No. S100-020), Goat anti-Rabbit Light Chain HRP Conjugate (Cat. No. A120-113P) and 4-8% SDS-PAGE (link to IP-western blot protocol in Additional Info section below).

Western blot of lysates performed using standard western blot reagents and 4-8% SDS-PAGE.

ADDITIONAL INFO <https://www.bethyl.com/product/A301-083A>
Use the link above to view SDS, a current list of citations, and other product specific information.
IP-western blot protocol: https://www.bethyl.com/content/protocol_IP_WB

This document certifies that this product has met all of the quality control standards defined by Bethyl Laboratories, Inc.
Eric McIntush, PhD | Chief Scientific Officer Date: June 21, 2019

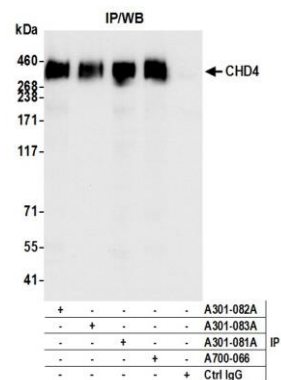


Detection of human and mouse CHD4 by western blot.

Samples: Whole cell lysate from HeLa (5, 15 and 50 µg, HEK293T (T; 50 µg) and mouse NIH 3T3 (M; 50 µg) cells.

Antibodies: Affinity purified rabbit anti-CHD4 antibody A301-083A (lot A301-083A-1) used at 0.04 µg/ml.

Detection: Chemiluminescence with exposure times of 3 seconds.



Detection of human CHD4 by western blot of immunoprecipitates.

Samples: Whole cell lysate (1.0 mg per IP reaction; 20% of IP loaded) from HeLa cells.

Antibodies: Affinity purified rabbit anti-CHD4 antibody A301-083A (lot A301-083A-1) used for IP at 6 µg per reaction. CHD4 was also immunoprecipitated by rabbit anti-CHD4 antibodies (A301-081A, A301-082A), and rabbit anti-CHD4 recombinant monoclonal antibody [BLR066G] (A700-066). For blotting immunoprecipitated CHD4, A700-066 was used at 1:1000.

Detection: Chemiluminescence with an exposure time of 1 second.