



SZABO SCANDIC

Part of Europa Biosite

Produktinformation



Forschungsprodukte & Biochemikalien



Zellkultur & Verbrauchsmaterial



Diagnostik & molekulare Diagnostik



Laborgeräte & Service

Weitere Information auf den folgenden Seiten!
See the following pages for more information!



Lieferung & Zahlungsart

siehe unsere [Liefer- und Versandbedingungen](#)

Zuschläge

- Mindermengenzuschlag
- Trockeneiszuschlag
- Gefahrgutzuschlag
- Expressversand

SZABO-SCANDIC HandelsgmbH

Quellenstraße 110, A-1100 Wien

T. +43(0)1 489 3961-0

F. +43(0)1 489 3961-7

mail@szabo-scandic.com

www.szabo-scandic.com

[linkedin.com/company/szaboscandic](https://www.linkedin.com/company/szaboscandic) 

SMARCA1 /SNF2L Antibody

Rabbit Polyclonal

Antigen Affinity Purified Protein ID NP_003060.2
Catalog No. A301-086A-T GeneID 6594
Lot No. A301-086A-T-2



APPLICATIONS	IP, IHC
SPECIES REACTIVITY	Human
PRESUMED REACTIVITY	Based on 100% sequence identity, this antibody is predicted to react with Mouse
AMOUNT	10 µl
CONCENTRATION	1000 µg/ml
STORAGE/SHELF LIFE	2 - 8° C / 1 year from date of receipt
PHYSICAL STATE	Liquid
BUFFER	Tris-citrate/phosphate buffer, pH 7 to 8 containing 0.09% Sodium Azide
ISOTYPE	IgG
ORIGIN	USA
PRODUCTION PROCEDURES	Antibody was affinity purified using an epitope specific to SMARCA1 /SNF2L immobilized on solid support.

The epitope recognized by A301-086A-T maps to a region between residue 1004 and 1054 of human SWI/SNF related, matrix associated, actin dependent regulator of chromatin, subfamily a, member 1 (sucrose nonfermenting 2-like 1) using the numbering given in entry NP_003060.2 (GeneID 6594).

Immunoglobulin concentration was determined by extinction coefficient: absorbance at 280 nm of 1.4 equals 1.0 mg of IgG.

APPLICATIONS Centrifuge tube to remove product from lid. Optimal working dilutions should be determined experimentally by the investigator. Prepare working dilution immediately before use.

Western Blot Not recommended for blotting crude sources of SMARCA1 /SNF2L. A301-086A can be used at 1:2,000 - 1:10,000 for blotting enriched sources (e.g. immunoprecipitated and exogenously expressed) of SMARCA1 /SNF2L.

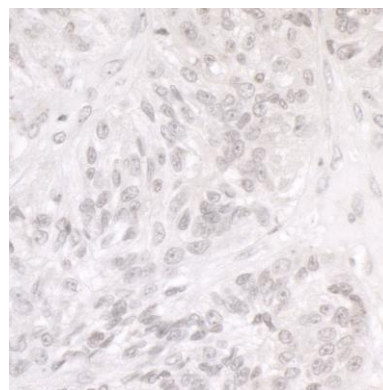
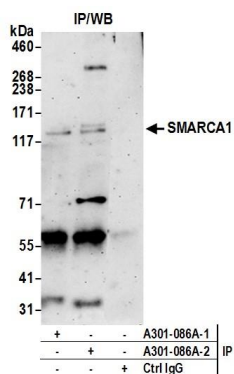
Immunoprecipitation 2 - 10 µg/mg lysate

Immunohistochemistry 1:1,000 - 1:5,000. Epitope retrieval with citrate buffer pH 6.0 is recommended for FFPE tissue sections.

APPLICATION NOTES Western blot of immunoprecipitates performed using Normal Pig Serum (Cat. No. S100-020), Goat anti-Rabbit Light Chain HRP Conjugate (Cat. No. A120-113P) and 4-8% SDS-PAGE (link to IP-western blot protocol in Additional Info section below).

ADDITIONAL INFO <https://www.bethyl.com/product/A301-086A-T>
Use the link above to view SDS, a current list of citations, and other product specific information. IP-western blot protocol: https://www.bethyl.com/content/protocol_IP_WB

This document certifies that this product has met all of the quality control standards defined by Bethyl Laboratories, Inc.
Eric McIntush, PhD | Chief Scientific Officer Date: June 21, 2019



Detection of human SMARCA1 by western blot of immunoprecipitates. *Samples:* Whole cell lysate (0.5 or 1.0 mg per IP reaction; 20% of IP loaded) from HeLa cells prepared using NETN lysis buffer. *Antibodies:* Affinity purified rabbit anti-SMARCA1 antibody A301-086A -T (lot A301-086A -T -2) used for IP at 6 µg per reaction. SMARCA1 was also immunoprecipitated by a previous lot of this antibody (lot A301-086A-1). For blotting immunoprecipitated SMARCA1, A301-086A was used at 1 µg/ml. *Detection:* Chemiluminescence with an exposure time of 3 minutes.

Detection of human SMARCA1/SNF2L by immunohistochemistry. *Sample:* FFPE section of human ovarian carcinoma. *Antibody:* Affinity purified rabbit anti-SMARCA1/SNF2L (Cat. No. A301-086A Lot2) used at a dilution of 1:1,000 (1 µg/ml). *Detection:* DAB