



SZABO SCANDIC

Part of Europa Biosite

Produktinformation



Forschungsprodukte & Biochemikalien



Zellkultur & Verbrauchsmaterial



Diagnostik & molekulare Diagnostik



Laborgeräte & Service

Weitere Information auf den folgenden Seiten!
See the following pages for more information!



Lieferung & Zahlungsart

siehe unsere [Liefer- und Versandbedingungen](#)

Zuschläge

- Mindermengenzuschlag
- Trockeneiszuschlag
- Gefahrgutzuschlag
- Expressversand

SZABO-SCANDIC HandelsgmbH

Quellenstraße 110, A-1100 Wien

T. +43(0)1 489 3961-0

F. +43(0)1 489 3961-7

mail@szabo-scandic.com

www.szabo-scandic.com

[linkedin.com/company/szaboscandic](https://www.linkedin.com/company/szaboscandic) 

SMARCB1 /SNF5 Antibody

Rabbit Polyclonal

Antigen Affinity Purified Protein ID NP_003064.2

Catalog No. A301-087A GeneID 6598

Lot No. A301-087A-3

APPLICATIONS	WB, IP, IHC
SPECIES REACTIVITY	Human, Mouse
PRESUMED REACTIVITY	Based on 100% sequence identity, this antibody is predicted to react with X. laevis, X. tropicalis, Chicken and Bovine
AMOUNT	100 µl
CONCENTRATION	1000 µg/ml
STORAGE/SHELF LIFE	2 – 8°C / 1 year from date of receipt
PHYSICAL STATE	Liquid
BUFFER	Tris-citrate/phosphate buffer, pH 7 to 8 containing 0.09% Sodium Azide
ISOTYPE	IgG
ORIGIN	USA
PRODUCTION PROCEDURES	Antibody was affinity purified using an epitope specific to SMARCB1 /SNF5 immobilized on solid support.

The epitope recognized by A301-087A maps to a region between residue 75 and 125 of human SWI/SNF related, matrix associated, actin dependent regulator of chromatin, subfamily b, member 1 (sucrose nonfermenting 5) using the numbering given in entry NP_003064.2 (GeneID 6598).

Immunoglobulin concentration was determined by extinction coefficient: absorbance at 280 nm of 1.4 equals 1.0 mg of IgG.

APPLICATIONS Centrifuge tube to remove product from lid. Optimal working dilutions should be determined experimentally by the investigator. Prepare working dilution immediately before use.

Western Blot 1:2,000 – 1:10,000

Immunoprecipitation 2 – 10 µg/mg lysate

Immunohistochemistry 1:1,000 to 1:5,000. Epitope retrieval with citrate buffer pH6.0 is recommended for FFPE tissue sections.

IHC HUMAN CONTROLS Breast Carcinoma, Non-Small Cell Lung Cancer, Prostate Carcinoma, Small Cell Lung Cancer

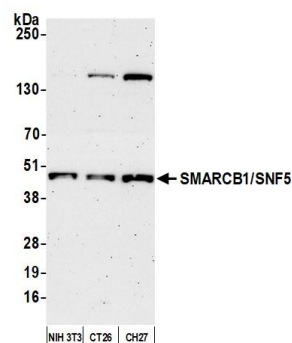
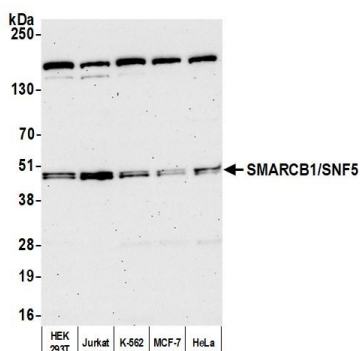
IHC MOUSE CONTROLS Teratoma

ADDITIONAL INFO <https://www.bethyl.com/product/A301-087A>

Use the link above to view SDS, a current list of citations, and other product specific information.

IP-western blot protocol: https://www.bethyl.com/content/protocol_IP_WB

This document certifies that this product has met all of the quality control standards defined by Bethyl Laboratories, Inc.
Michael Spencer, PhD Date: March 23, 2022

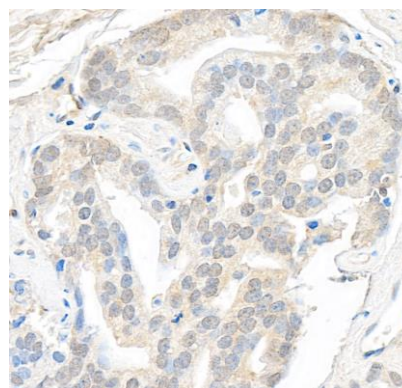
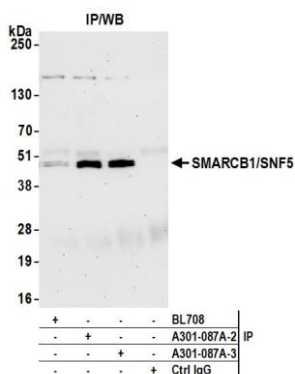


Detection of human SMARCB1 /SNF5 by western blot.

Samples: Whole cell lysate (10 µg) from HEK293T, Jurkat, K-562, MCF-7, and HeLa cells prepared using NETN lysis buffer. *Antibody:* Affinity purified rabbit anti-SMARCB1 /SNF5 antibody (A301-087A lot 3) used for WB at 0.1 µg/ml. *Detection:* Chemiluminescence with an exposure time of 75 seconds.

Detection of mouse SMARCB1 /SNF5 by western blot.

Samples: Whole cell lysate (10 µg) from NIH 3T3, CT26, and CH27 cells prepared using NETN lysis buffer. *Antibody:* Affinity purified rabbit anti-SMARCB1 /SNF5 antibody (A301-087A lot 3) used for WB at 0.1 µg/ml. *Detection:* Chemiluminescence with an exposure time of 3 minutes.



Detection of human SMARCB1 /SNF5 by western blot of immunoprecipitates.

Samples: Whole cell lysate (1.0 mg per IP reaction; 20% of IP loaded) from HEK293T cells prepared using NETN lysis buffer. *Antibodies:* Affinity purified rabbit anti-SMARCB1 /SNF5 antibody (A301-087A lot 3) used for IP at 6 µg per reaction. SMARCB1 /SNF5 was also immunoprecipitated by a previous lot of this antibody (A301-087A lot 2) and a second antibody against a different epitope of SMARCB1 /SNF5 (BL708). For blotting immunoprecipitated SMARCB1 /SNF5, A301-087A was used at 0.1 µg/ml. *Detection:* Chemiluminescence with an exposure time of 30 seconds.

Detection of human SMARCB1 /SNF5 by immunohistochemistry.

Sample: FFPE section of human prostate carcinoma. *Antibody:* Affinity purified rabbit anti-SMARCB1 /SNF5 (A301-087A Lot 3) used at a dilution of 1:2,000 (0.5µg/ml). *Detection:* DAB