



SZABO SCANDIC

Part of Europa Biosite

Produktinformation



Forschungsprodukte & Biochemikalien



Zellkultur & Verbrauchsmaterial



Diagnostik & molekulare Diagnostik



Laborgeräte & Service

Weitere Information auf den folgenden Seiten!
See the following pages for more information!



Lieferung & Zahlungsart

siehe unsere [Liefer- und Versandbedingungen](#)

Zuschläge

- Mindermengenzuschlag
- Trockeneiszuschlag
- Gefahrgutzuschlag
- Expressversand

SZABO-SCANDIC HandelsgmbH

Quellenstraße 110, A-1100 Wien

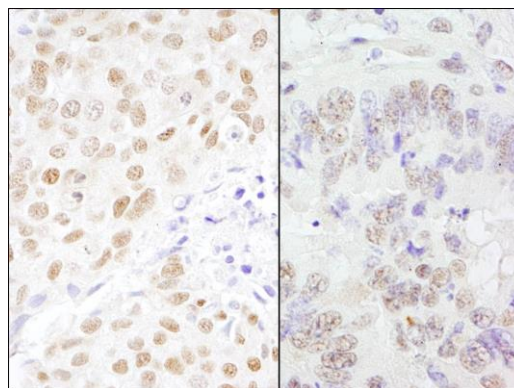
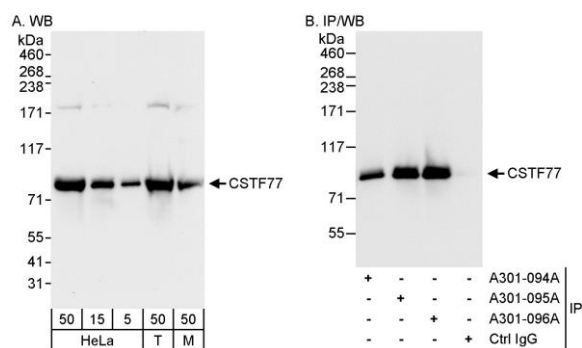
T. +43(0)1 489 3961-0

F. +43(0)1 489 3961-7

mail@szabo-scandic.com

www.szabo-scandic.com

[linkedin.com/company/szaboscandic](https://www.linkedin.com/company/szaboscandic) 



Detection of human and mouse CSTF77 by western blot (h&m) and immunoprecipitation (h). *Samples:* Whole cell lysate from HeLa (5, 15 and 50 μ g for WB; 1 mg for IP, 20% of IP loaded), HEK293T (T; 50 μ g) and mouse NIH 3T3 (M; 50 μ g) cells. *Antibodies:* Affinity purified rabbit anti-CSTF77 antibody A301-096A used for WB at 0.04 μ g/ml (A) and 1 μ g/ml (B) and used for IP at 3 μ g/mg lysate. CSTF77 was also immunoprecipitated by rabbit anti-CSTF77 antibodies A301-094A and A301-095A, which recognize upstream epitopes. *Detection:* Chemiluminescence with exposure times of 10 seconds (A) and 1 second (B).

Detection of human and mouse CSTF77 by immunohistochemistry. *Sample:* FFPE section of human breast carcinoma (left) and mouse teratoma (right). *Antibody:* Affinity purified rabbit anti-CSTF77 (Cat. No. A301-096A) used at a dilution of 1:200 (1 μ g/ml). *Detection:* DAB