



SZABO SCANDIC

Part of Europa Biosite

Produktinformation



Forschungsprodukte & Biochemikalien



Zellkultur & Verbrauchsmaterial



Diagnostik & molekulare Diagnostik



Laborgeräte & Service

Weitere Information auf den folgenden Seiten!
See the following pages for more information!



Lieferung & Zahlungsart

siehe unsere [Liefer- und Versandbedingungen](#)

Zuschläge

- Mindermengenzuschlag
- Trockeneiszuschlag
- Gefahrgutzuschlag
- Expressversand

SZABO-SCANDIC HandelsgmbH

Quellenstraße 110, A-1100 Wien

T. +43(0)1 489 3961-0

F. +43(0)1 489 3961-7

mail@szabo-scandic.com

www.szabo-scandic.com

[linkedin.com/company/szaboscandic](https://www.linkedin.com/company/szaboscandic) 

Senataxin Antibody

Rabbit Polyclonal

Antigen Affinity Purified

Catalog No. A301-105A

Lot No. A301-105A-4

Protein ID NP_055861.2

GeneID 23064



APPLICATIONS WB, IP

SPECIES REACTIVITY Human

AMOUNT 100 µl

CONCENTRATION 1000 µg/ml

STORAGE/SHELF LIFE 2 – 8° C / 1 year from date of receipt

PHYSICAL STATE Liquid

BUFFER Tris-citrate/phosphate buffer, pH 7 to 8 containing 0.09% Sodium Azide

ISOTYPE IgG

ORIGIN USA

PRODUCTION PROCEDURES Antibody was affinity purified using an epitope specific to Senataxin immobilized on solid support.

The epitope recognized by A301-105A maps to a region between residue 2627 and 2677 of human senataxin using the numbering given in entry NP_055861.2 (GeneID 23064).

Immunoglobulin concentration was determined by extinction coefficient: absorbance at 280 nm of 1.4 equals 1.0 mg of IgG.

APPLICATIONS Centrifuge tube to remove product from lid. Optimal working dilutions should be determined experimentally by the investigator. Prepare working dilution immediately before use.

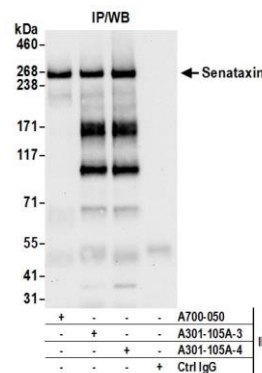
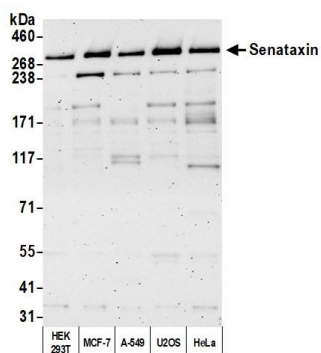
Western Blot 1:2,000 – 1:10,000

Immunoprecipitation 2 – 10 µg/mg lysate

ADDITIONAL INFO <https://www.bethyl.com/product/A301-105A>

Use the link above to view SDS, a current list of citations, and other product specific information. IP-western blot protocol: https://www.bethyl.com/content/protocol_IP_WB

This document certifies that this product has met all of the quality control standards defined by Bethyl Laboratories, Inc.
Eric McIntush, PhD | Chief Scientific Officer Date: October 20, 2020



Detection of human Senataxin by western blot. *Samples:* Whole cell lysate (50 µg) from HEK293T, MCF-7, A-549, U2OS, and HeLa cells prepared using NETN lysis buffer. *Antibody:* Affinity purified rabbit anti-Senataxin antibody A301-105A (lot A301-105A-4) used for WB at 0.04 µg/ml. *Detection:* Chemiluminescence with an exposure time of 3 minutes.

Detection of human Senataxin by western blot of immunoprecipitates. *Samples:* Whole cell lysate (1.0 mg per IP reaction; 20% of IP loaded) from HEK293T cells prepared using NETN lysis buffer. *Antibodies:* Affinity purified rabbit anti-Senataxin antibody A301-105A (lot A301-105A-4) used for IP at 6 µg per reaction. Senataxin was also immunoprecipitated by a previous lot of this antibody (lot A301-105A-3) and rabbit recombinant monoclonal anti-Senataxin antibody A700-050. For blotting immunoprecipitated Senataxin, A301-105A was used at 0.04 µg/ml. *Detection:* Chemiluminescence with an exposure time of 10 seconds.