



SZABO SCANDIC

Part of Europa Biosite

Produktinformation



Forschungsprodukte & Biochemikalien



Zellkultur & Verbrauchsmaterial



Diagnostik & molekulare Diagnostik



Laborgeräte & Service

Weitere Information auf den folgenden Seiten!
See the following pages for more information!



Lieferung & Zahlungsart

siehe unsere [Liefer- und Versandbedingungen](#)

Zuschläge

- Mindermengenzuschlag
- Trockeneiszuschlag
- Gefahrgutzuschlag
- Expressversand

SZABO-SCANDIC HandelsgmbH

Quellenstraße 110, A-1100 Wien

T. +43(0)1 489 3961-0

F. +43(0)1 489 3961-7

mail@szabo-scandic.com

www.szabo-scandic.com

[linkedin.com/company/szaboscandic](https://www.linkedin.com/company/szaboscandic) 

Calreticulin Antibody

Rabbit Polyclonal

Antigen Affinity Purified

Protein ID NP_004334.1

Catalog No. A301-129A-T

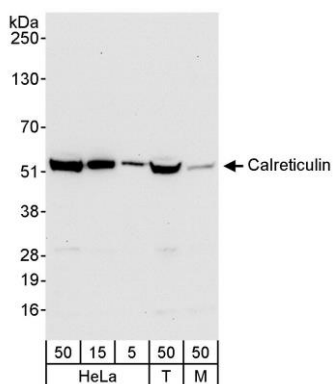
GeneID 811

Lot No. A301-129A-T-1



APPLICATIONS	WB				
SPECIES REACTIVITY	Human, Mouse				
AMOUNT	20 µl (2 blots)				
CONCENTRATION	40 µg/ml				
STORAGE/SHELF LIFE	2 – 8° C / 1 year from date of receipt				
PHYSICAL STATE	Liquid				
BUFFER	Tris-buffered Saline containing 0.1% BSA and 0.09% Sodium Azide				
ISOTYPE	IgG				
ORIGIN	USA				
PRODUCTION PROCEDURES	<p>Antibody was affinity purified using an epitope specific to Calreticulin immobilized on solid support.</p> <p>The epitope recognized by A301-129A-T maps to a region between residue 1 and 50 of human calreticulin (Sicca syndrome antigen A) using the numbering given in entry NP_004334.1 (GeneID 811).</p>				
APPLICATIONS	<p>Centrifuge tube to remove product from lid. Optimal working dilutions should be determined experimentally by the investigator. Prepare working dilution immediately before use.</p> <table><tr><td>Western Blot</td><td>1:1000</td></tr><tr><td>Immunoprecipitation</td><td>Not recommended</td></tr></table>	Western Blot	1:1000	Immunoprecipitation	Not recommended
Western Blot	1:1000				
Immunoprecipitation	Not recommended				
APPLICATION NOTES	Western blot of lysates performed using standard western blot reagents and 4–20% SDS-PAGE.				
ADDITIONAL INFO	<p>https://www.bethyl.com/product/A301-129A-T</p> <p>Use the link above to view SDS, a current list of citations, and other product specific information.</p>				

This document certifies that this product has met all of the quality control standards defined by Bethyl Laboratories, Inc.
Eric McIntush, PhD | Chief Scientific Officer Date: June 21, 2019



Detection of human and mouse Calreticulin by western blot. *Samples:* Whole cell lysate from HeLa (5, 15, and 50 μg), HEK293T (T; 50 μg) and mouse NIH 3T3 (M; 50 μg) cells. *Antibody:* Affinity purified rabbit anti-Calreticulin antibody A301-129A-T used at 1:1000. *Detection:* Chemiluminescence with an exposure time of 30 seconds.