



# SZABO SCANDIC

Part of Europa Biosite

## Produktinformation



Forschungsprodukte & Biochemikalien



Zellkultur & Verbrauchsmaterial



Diagnostik & molekulare Diagnostik



Laborgeräte & Service

Weitere Information auf den folgenden Seiten!  
See the following pages for more information!



### Lieferung & Zahlungsart

siehe unsere [Liefer- und Versandbedingungen](#)

### Zuschläge

- Mindermengenzuschlag
- Trockeneiszuschlag
- Gefahrgutzuschlag
- Expressversand

### SZABO-SCANDIC HandelsgmbH

Quellenstraße 110, A-1100 Wien

T. +43(0)1 489 3961-0

F. +43(0)1 489 3961-7

[mail@szabo-scandic.com](mailto:mail@szabo-scandic.com)

[www.szabo-scandic.com](http://www.szabo-scandic.com)

[linkedin.com/company/szaboscandic](https://www.linkedin.com/company/szaboscandic) 

# Filamin A Antibody

Rabbit Polyclonal

Antigen Affinity Purified

Protein ID NP\_001447.1

Catalog No. A301-135A-T

GeneID 2316

Lot No. A301-135A-T-1



<b>APPLICATIONS</b>	WB, IP, IHC
<b>SPECIES REACTIVITY</b>	Human, Mouse
<b>AMOUNT</b>	20 µl (2 blots)
<b>CONCENTRATION</b>	40 µg/ml
<b>STORAGE/SHELF LIFE</b>	2 - 8° C / 1 year from date of receipt
<b>PHYSICAL STATE</b>	Liquid
<b>BUFFER</b>	Tris-buffered Saline containing 0.1% BSA and 0.09% Sodium Azide
<b>ISOTYPE</b>	IgG
<b>ORIGIN</b>	USA
<b>PRODUCTION PROCEDURES</b>	Antibody was affinity purified using an epitope specific to Filamin A immobilized on solid support.

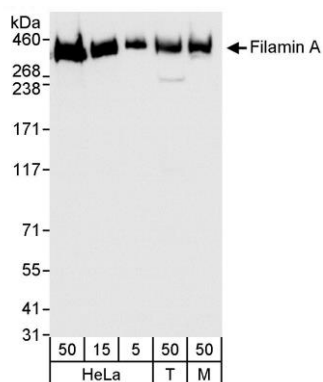
The epitope recognized by A301-135A-T maps to a region between residue 2597 and 2647 of human Filamin A using the numbering given in entry NP\_001447.1 (GeneID 2316).

<b>APPLICATIONS</b>	Centrifuge tube to remove product from lid. Optimal working dilutions should be determined experimentally by the investigator. Prepare working dilution immediately before use.
Western Blot	1:1000
Immunoprecipitation	The antibody contained within A301-135A-T has been qualified for use in immunoprecipitation; however, we recommend using the alternative formulation of this antibody found as product A301-135A.
Immunohistochemistry	1:100 - 1:400. Epitope retrieval with citrate buffer pH 6.0 is recommended for FFPE tissue sections.

**APPLICATION NOTES** Western blot of immunoprecipitates performed using Normal Pig Serum (Cat. No. S100-020), Goat anti-Rabbit Light Chain HRP Conjugate (Cat. No. A120-113P) and 4-8% SDS-PAGE (link to IP-western blot protocol in Additional Info section below).

**ADDITIONAL INFO** Western blot of lysates performed using standard western blot reagents and 4-8% SDS-PAGE. <https://www.bethyl.com/product/A301-135A-T>  
Use the link above to view SDS, a current list of citations, and other product specific information. IP-western blot protocol [https://www.bethyl.com/content/protocol\\_IP\\_WB](https://www.bethyl.com/content/protocol_IP_WB)

This document certifies that this product has met all of the quality control standards defined by Bethyl Laboratories, Inc.  
Eric McIntush, PhD | Chief Scientific Officer Date: October 18, 2019



**Detection of human and mouse Filamin A by western blot.** *Samples:* Whole cell lysate from HeLa (5, 15 and 50  $\mu$ g), HEK293T (T; 50  $\mu$ g) and mouse NIH 3T3 (M; 50  $\mu$ g) cells. *Antibodies:* Affinity purified rabbit anti-Filamin A antibody A301-135A-T (lot A301-135A-T-1) used for WB at 1:1000. *Detection:* Chemiluminescence with exposure time of 1 second.