



SZABO SCANDIC

Part of Europa Biosite

Produktinformation



Forschungsprodukte & Biochemikalien



Zellkultur & Verbrauchsmaterial



Diagnostik & molekulare Diagnostik



Laborgeräte & Service

Weitere Information auf den folgenden Seiten!
See the following pages for more information!



Lieferung & Zahlungsart

siehe unsere [Liefer- und Versandbedingungen](#)

Zuschläge

- Mindermengenzuschlag
- Trockeneiszuschlag
- Gefahrgutzuschlag
- Expressversand

SZABO-SCANDIC HandelsgmbH

Quellenstraße 110, A-1100 Wien

T. +43(0)1 489 3961-0

F. +43(0)1 489 3961-7

mail@szabo-scandic.com

www.szabo-scandic.com

[linkedin.com/company/szaboscandic](https://www.linkedin.com/company/szaboscandic) 

DNA Ligase 1 Antibody

Rabbit Polyclonal

Antigen Affinity Purified

Protein ID NP_000225.1

Catalog No. A301-136A-T

GeneID 3978

Lot No. A301-136A-T-1



APPLICATIONS	IP, IHC
SPECIES REACTIVITY	Human
AMOUNT	10 µl
CONCENTRATION	1000 µg/ml
STORAGE/SHELF LIFE	2 - 8° C / 1 year from date of receipt
PHYSICAL STATE	Liquid
BUFFER	Tris-citrate/phosphate buffer, pH 7 to 8 containing 0.09% Sodium Azide
ISOTYPE	IgG
ORIGIN	USA
PRODUCTION PROCEDURES	Antibody was affinity purified using an epitope specific to DNA Ligase 1 immobilized on solid support.

The epitope recognized by A301-136A-T maps to a region between residue 200 and 250 of human DNA ligase 1 using the numbering given in entry NP_000225.1 (GeneID 3978).

Immunoglobulin concentration was determined by extinction coefficient: absorbance at 280 nm of 1.4 equals 1.0 mg of IgG.

APPLICATIONS Centrifuge tube to remove product from lid. Optimal working dilutions should be determined experimentally by the investigator. Prepare working dilution immediately before use.

Western Blot Not recommended. Use rabbit anti-DNA Ligase 1 antibody A301-137A-T.

Immunoprecipitation 2 - 5 µg/mg lysate

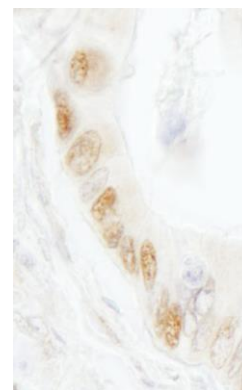
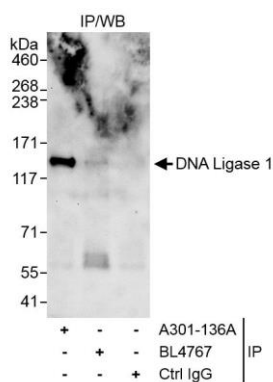
Immunohistochemistry 1:500 - 1:2,000. Epitope retrieval with citrate buffer pH 6.0 is recommended for FFPE tissue sections.

APPLICATION NOTES Western blot of immunoprecipitates performed using Normal Pig Serum (Cat. No. S100-020), Goat anti-Rabbit Light Chain HRP Conjugate (Cat. No. A120-113P) and 4-8% SDS-PAGE (link to IP-western blot protocol in Additional Info section below).

ADDITIONAL INFO <https://www.bethyl.com/product/A301-136A-T>

Use the link above to view SDS, a current list of citations, and other product specific information. IP-western blot protocol: https://www.bethyl.com/content/protocol_IP_WB

This document certifies that this product has met all of the quality control standards defined by Bethyl Laboratories, Inc.
Eric McIntush, PhD | Chief Scientific Officer Date: June 21, 2019



Detection of human DNA Ligase 1 by western blot of immunoprecipitates. *Samples:* Whole cell lysate (1 mg for IP, 20% of IP loaded) from HeLa cells. *Antibody:* Affinity purified rabbit anti-DNA Ligase 1 antibody A301-136A-T used for IP at 3 µg/mg lysate. For blotting immunoprecipitated DNA Ligase 1, rabbit anti-DNA Ligase 1 antibody BL4767 was used at 1 µg/ml. *Detection:* Chemiluminescence with an exposure time of 30 seconds.

Detection of human DNA Ligase 1 by immunohistochemistry. *Samples:* FFPE section of human colon carcinoma. *Antibody:* Affinity purified rabbit anti-DNA Ligase 1 (Cat. No. A301-136A-T) used at a dilution of 1:1,000 (1 µg/ml). *Detection:* DAB.