



SZABO SCANDIC

Part of Europa Biosite

Produktinformation



Forschungsprodukte & Biochemikalien



Zellkultur & Verbrauchsmaterial



Diagnostik & molekulare Diagnostik



Laborgeräte & Service

Weitere Information auf den folgenden Seiten!
See the following pages for more information!



Lieferung & Zahlungsart

siehe unsere [Liefer- und Versandbedingungen](#)

Zuschläge

- Mindermengenzuschlag
- Trockeneiszuschlag
- Gefahrgutzuschlag
- Expressversand

SZABO-SCANDIC HandelsgmbH

Quellenstraße 110, A-1100 Wien

T. +43(0)1 489 3961-0

F. +43(0)1 489 3961-7

mail@szabo-scandic.com

www.szabo-scandic.com

[linkedin.com/company/szaboscandic](https://www.linkedin.com/company/szaboscandic) 

PCM1 Antibody

Rabbit Polyclonal

Antigen Affinity Purified

Protein ID NP_006188.2

Catalog No. A301-149A-T

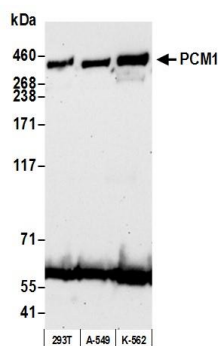
GeneID 5108

Lot No. A301-149A-T-2

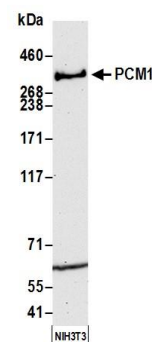


APPLICATIONS	WB, IP
SPECIES REACTIVITY	Human, Mouse
AMOUNT	20 µl (2 blots)
CONCENTRATION	100 µg/ml
STORAGE/SHELF LIFE	2 - 8° C / 1 year from date of receipt
PHYSICAL STATE	Liquid
BUFFER	Tris-buffered Saline containing 0.1% BSA and 0.09% Sodium Azide
ISOTYPE	IgG
ORIGIN	USA
PRODUCTION PROCEDURES	Antibody was affinity purified using an epitope specific to PCM1 immobilized on solid support. The epitope recognized by A301-149A-T maps to a region between residue 1925 and 1975 of human pericentriolar material 1 using the numbering given in entry NP_006188.2 (GeneID 5108).
APPLICATIONS	Centrifuge tube to remove product from lid. Optimal working dilutions should be determined experimentally by the investigator. Prepare working dilution immediately before use. Western Blot 1:1000 Immunoprecipitation The antibody contained within A301-149A-T has been qualified for use in immunoprecipitation; however, we recommend using the alternative formulation of this antibody found as product A301-149A.
APPLICATION NOTES	Western blot of immunoprecipitates performed using Normal Pig Serum (Cat. No. S100-020), Goat anti-Rabbit Light Chain HRP Conjugate (Cat. No. A120-113P) and 4-8% SDS-PAGE (link to IP-western blot protocol in Additional Info section below). Western blot of lysates performed using standard western blot reagents and 4-8% SDS-PAGE.
ADDITIONAL INFO	https://www.bethyl.com/product/A301-149A-T Use the link above to view SDS, a current list of citations, and other product specific information. IP-western blot protocol: https://www.bethyl.com/content/protocol_IP_WB

This document certifies that this product has met all of the quality control standards defined by Bethyl Laboratories, Inc.
Eric McIntush, PhD | Chief Scientific Officer Date: June 21, 2019



Detection of human PCM1 by western blot. *Samples:* Whole cell lysate (50 μ g) from HEK293T, A-549, and K-562 cells prepared using NETN lysis buffer. *Antibody:* Affinity purified rabbit anti-PCM1 antibody A301-149A-T (lot A301-149A-T-2) used for WB at 1:1000. *Detection:* Chemiluminescence with an exposure time of 75 seconds.



Detection of mouse PCM1 by western blot. *Samples:* Whole cell lysate (50 μ g) from NIH 3T3 cells prepared using NETN lysis buffer. *Antibody:* Affinity purified rabbit anti-PCM1 antibody A301-149A-T (lot A301-149A-T-2) used for WB at 1:1000. *Detection:* Chemiluminescence with an exposure time of 3 minutes.