



# SZABO SCANDIC

Part of Europa Biosite

## Produktinformation



Forschungsprodukte & Biochemikalien



Zellkultur & Verbrauchsmaterial



Diagnostik & molekulare Diagnostik



Laborgeräte & Service

Weitere Information auf den folgenden Seiten!  
See the following pages for more information!



### Lieferung & Zahlungsart

siehe unsere [Liefer- und Versandbedingungen](#)

### Zuschläge

- Mindermengenzuschlag
- Trockeneiszuschlag
- Gefahrgutzuschlag
- Expressversand

### SZABO-SCANDIC HandelsgmbH

Quellenstraße 110, A-1100 Wien

T. +43(0)1 489 3961-0

F. +43(0)1 489 3961-7

[mail@szabo-scandic.com](mailto:mail@szabo-scandic.com)

[www.szabo-scandic.com](http://www.szabo-scandic.com)

[linkedin.com/company/szaboscandic](https://www.linkedin.com/company/szaboscandic) 

# PCM1 Antibody

Rabbit Polyclonal

Antigen Affinity Purified

Protein ID NP\_006188.2

Catalog No. A301-149A

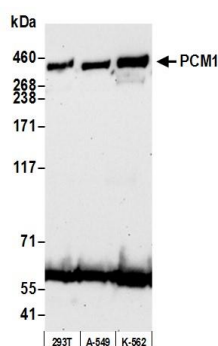
GeneID 5108

Lot No. A301-149A-2

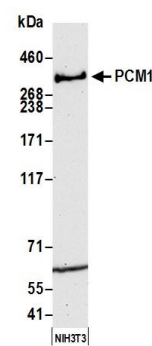


<b>APPLICATIONS</b>	WB, IP
<b>SPECIES REACTIVITY</b>	Human, Mouse
<b>AMOUNT</b>	100 µl
<b>CONCENTRATION</b>	200 µg/ml
<b>STORAGE/SHELF LIFE</b>	2 - 8° C / 1 year from date of receipt
<b>PHYSICAL STATE</b>	Liquid
<b>BUFFER</b>	Tris-buffered Saline containing 0.1% BSA and 0.09% Sodium Azide
<b>ISOTYPE</b>	IgG
<b>ORIGIN</b>	USA
<b>PRODUCTION PROCEDURES</b>	<p>Antibody was affinity purified using an epitope specific to PCM1 immobilized on solid support.</p> <p>The epitope recognized by A301-149A maps to a region between residue 1925 and 1975 of human pericentriolar material 1 using the numbering given in entry NP_006188.2 (GeneID 5108).</p> <p>Immunoglobulin concentration was determined by extinction coefficient: absorbance at 280 nm of 1.4 equals 1.0 mg of IgG.</p>
<b>APPLICATIONS</b>	<p>Centrifuge tube to remove product from lid. Optimal working dilutions should be determined experimentally by the investigator. Prepare working dilution immediately before use.</p> <p>Western Blot                      1:2,000 - 1:10,000</p> <p>Immunoprecipitation        2 - 10 µg/mg lysate</p>
<b>APPLICATION NOTES</b>	<p>Western blot of immunoprecipitates performed using Normal Pig Serum (Cat. No. S100-020), Goat anti-Rabbit Light Chain HRP Conjugate (Cat. No. A120-113P) and 4-8% SDS-PAGE (link to IP-western blot protocol in Additional Info section below).</p> <p>Western blot of lysates performed using standard western blot reagents and 4-8% SDS-PAGE.</p>
<b>ADDITIONAL INFO</b>	<p><a href="https://www.bethyl.com/product/A301-149A">https://www.bethyl.com/product/A301-149A</a></p> <p>Use the link above to view SDS, a current list of citations, and other product specific information.</p> <p>IP-western blot protocol: <a href="https://www.bethyl.com/content/protocol_IP_WB">https://www.bethyl.com/content/protocol_IP_WB</a></p>

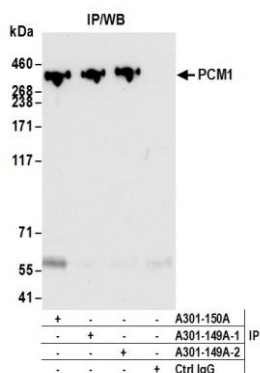
This document certifies that this product has met all of the quality control standards defined by Bethyl Laboratories, Inc.  
Eric McIntush, PhD | Chief Scientific Officer Date: June 24, 2019



**Detection of human PCM1 by western blot. Samples:** Whole cell lysate (50 µg) from HEK293T, A-549, and K-562 cells prepared using NETN lysis buffer. **Antibody:** Affinity purified rabbit anti-PCM1 antibody A301-149A (lot A301-149A-2) used for WB at 0.1 µg/ml. **Detection:** Chemiluminescence with an exposure time of 75 seconds.



**Detection of mouse PCM1 by western blot. Samples:** Whole cell lysate (50 µg) from NIH 3T3 cells prepared using NETN lysis buffer. **Antibody:** Affinity purified rabbit anti-PCM1 antibody A301-149A (lot A301-149A-2) used for WB at 0.1 µg/ml. **Detection:** Chemiluminescence with an exposure time of 3 minutes.



**Detection of human PCM1 by western blot of immunoprecipitates. Samples:** Whole cell lysate (1.0 mg per IP reaction; 20% of IP loaded) from HEK293T cells prepared using NETN lysis buffer. **Antibodies:** Affinity purified rabbit anti-PCM1 antibody A301-149A (lot A301-149A-2) used for IP at 6 µg per reaction. PCM1 was also immunoprecipitated by a previous lot of this antibody (lot A301-149A-1) and rabbit anti-PCM1 antibody A301-150A. For blotting immunoprecipitated PCM1, A301-149A was used at 0.1 µg/ml. **Detection:** Chemiluminescence with an exposure time of 10 seconds.